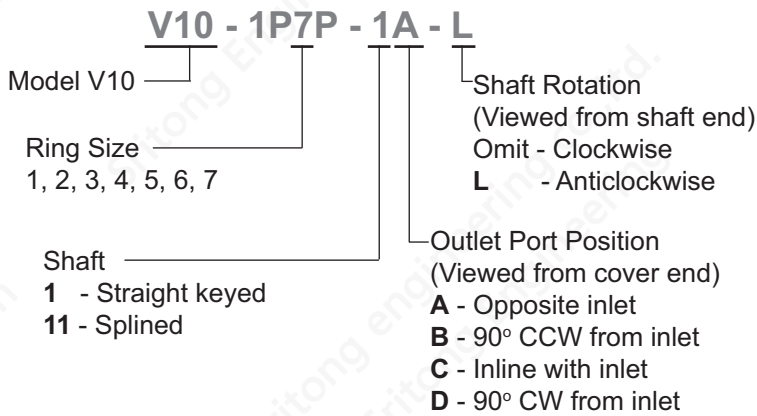


Single Vane Pump V10

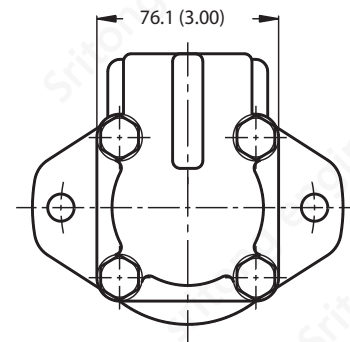
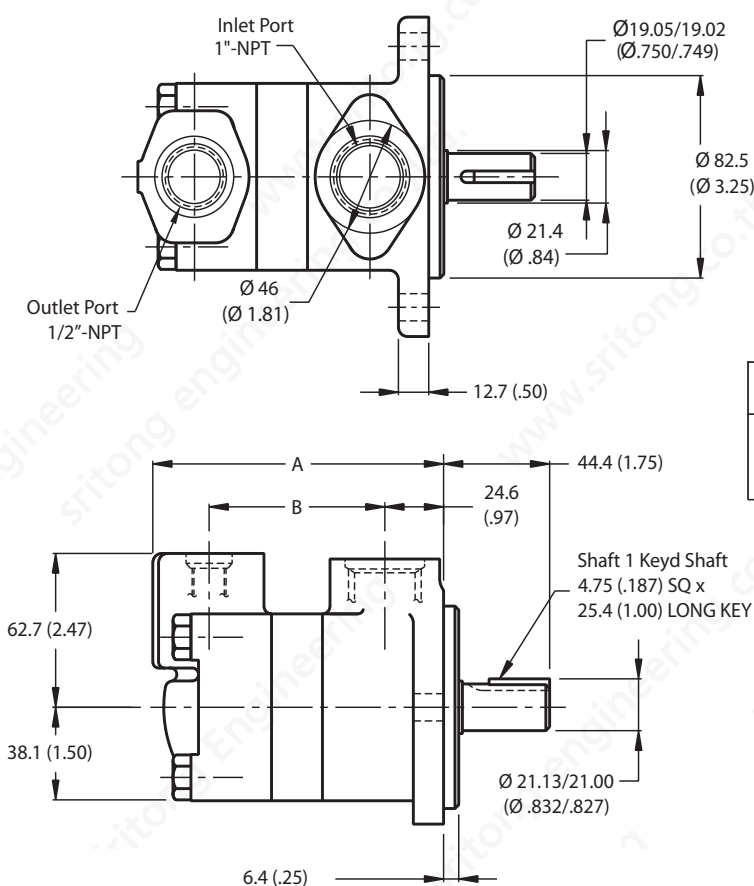
INTERMAGNUS

Model Code

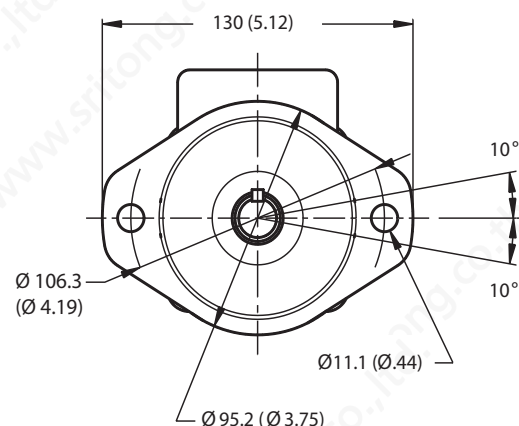


Performance Data and Dimensions mm (inch)

Model Series	Geometric Displacement	Delivery at 1500 r/min & 7 bar (100 psi)	Maximum Speed	Minimum Speed	Maximum Pressure	Weight
	<i>cm³/r (in³/r)</i>	<i>L/min (USgpm)</i>	<i>r/min</i>	<i>r/min</i>	<i>bar (psi)</i>	
V10-1P1P-*	3.3 (0.20)	4.70 (1.25)	4800	650	172 (2500)	4.5 - 6.8 (10 - 15)
V10-1P2P-*	6.6 (0.40)	9.40 (2.50)	4500	650	172 (2500)	
V10-1P3P-*	9.8 (0.60)	14.20 (3.75)	4000	650	172 (2500)	
V10-1P4P-*	13.1 (0.80)	18.90 (5.00)	3400	650	172 (2500)	
V10-1P5P-*	16.4 (1.00)	23.60 (6.25)	3200	650	172 (2500)	
V10-1P6P-*	19.5 (1.19)	28.40 (7.50)	3000	650	152 (2200)	
V10-1P7P-*	22.8 (1.39)	33.10 (8.75)	2800	650	138 (2000)	



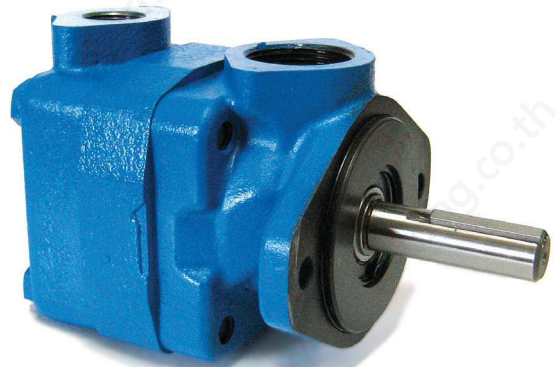
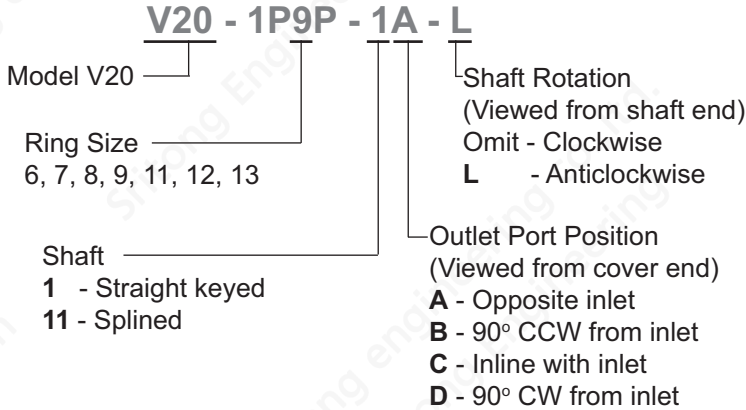
Delivery @ 1200 rpm & 7 bar (100 psi)	Dimension	
	A	B
1, 2, 3	115.6 (4.55)	67.3 (2.65)
4, 5	121.9 (4.80)	73.7 (2.90)
6, 7	127.0 (5.00)	78.7 (3.10)



Single Vane Pump V20

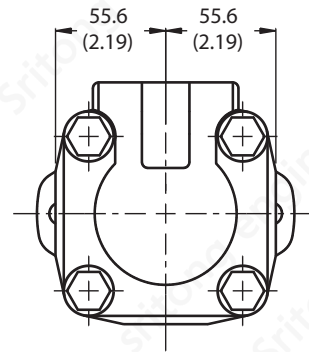
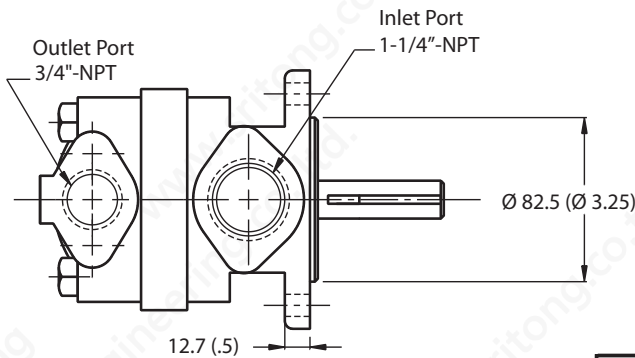
INTERMAGNUS

Model Code

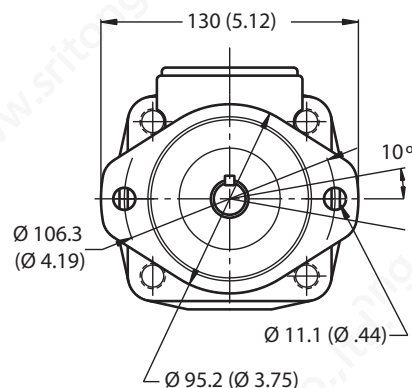
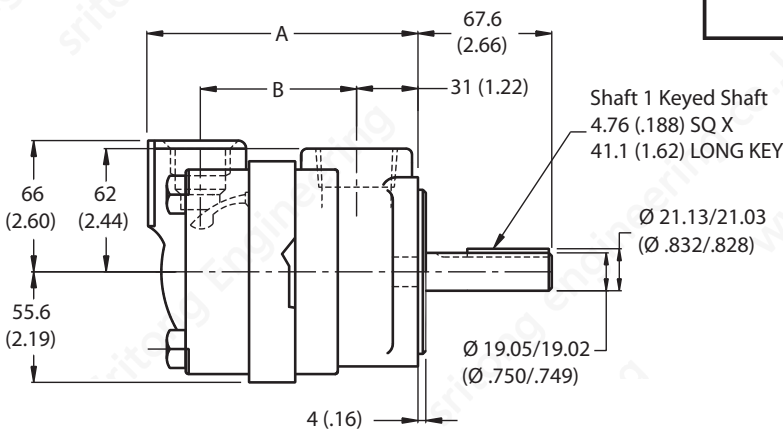


Performance Data and Dimensions mm (inch)

Model Series	Geometric Displacement <i>cm³/r (in³/r)</i>	Delivery at 1500 r/min & 7 bar (100 psi) <i>L/min (USgpm)</i>	Maximum Speed <i>r/min</i>	Minimum Speed <i>r/min</i>	Maximum Pressure <i>bar (psi)</i>	Weight <i>kg (lb)</i>
V20-1P6P-*	19.5 (1.19)	28.39 (7.50)	3400	650	172 (2500)	7.3 - 8.2 (16 - 18)
V20-1P7P-*	22.8 (1.39)	33.11 (8.75)	3000	650	172 (2500)	
V20-1P8P-*	26.5 (1.62)	37.85 (10.00)	2800	650	172 (2500)	
V20-1P9P-*	29.7 (1.81)	42.57 (11.25)	2800	650	172 (2500)	
V20-1P11P-*	36.4 (2.22)	52.04 (13.75)	2500	650	172 (2500)	
V20-1P12P-*	39.0 (2.38)	56.77 (15.00)	2400	650	152 (2200)	
V20-1P13P-*	42.4 (2.59)	61.50 (16.25)	2400	650	152 (2200)	



Delivery @ 1200 rpm & 7 bar (100 psi)	Dimension	
	A	B
6	125.2 (4.93)	71.1 (2.80)
7,8,9	131.6 (5.18)	77.5 (3.05)
11	136.7 (5.38)	82.6 (3.25)
12,13	140.2 (5.52)	86.1 (3.39)



DOUBLE VANE PUMP V2010/V2020

INTERMAGNUS

- High Performance
- Low Cost
- Extended Life
- Versatile
- Compact
- Quiet Operation
- Hydraulic Balance



Model Code

1. V2010-1F13S7S-1CB-L Model

Model V2010/V2020

SAE "B" Mounting and 4 Bolt Flange Inlet Port

2. V2010-1F13S7S-1CB-L Ring Size

2.1 Shaft End: 7, 8, 9, 11, 12, 13

2.2 Cover End: 1, 2, 3, 4, 5, 6, 7 (V2010)

6, 7, 8, 9, 11 (V2020)

3. V2010-1F13S7S-1CB-L Port Size

3.1 Shaft End Outlet S - 1.062"-12 Str. thd.

3.2 Cover End Outlet S - .750"-16 Str. thd. (V2010)
- 1.062"-12 Str. thd. (V2020)

4. V2010-1F13S7S-1CB-L Shaft Type

1 - Straight keyed

11 - Splined

5. V2010-1F13S7S-1CB-L Porting

Shaft End Outlet port position (Viewed from cover end)

A - Opposite inlet

B - 90° CCW from inlet

C - Inline with inlet

D - 90° CW from inlet

6. V2010-1F13S7S-1CB-L Porting

Cover End Outlet port position (Viewed from cover end)

For V2010

A - 135° CCW from inlet

B - 45° CCW from inlet

C - 45° CW from inlet

D - 135° CW from inlet

For V2020

A - Opposite inlet

B - 90° CCW from inlet

C - Inline with inlet

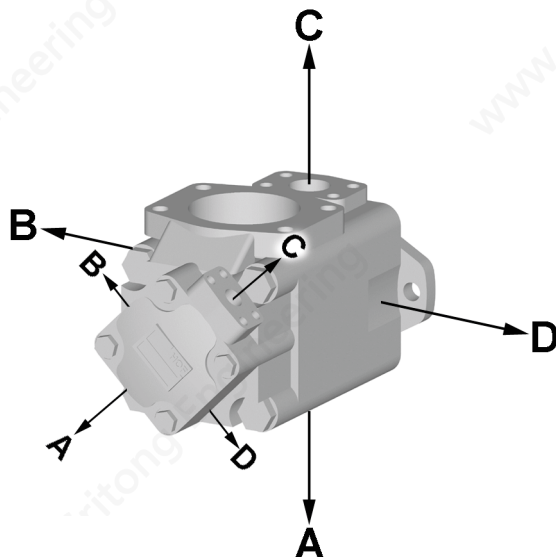
D - 90° CW from inlet

7. V2010-1F13S7S-1CB-L Rotation

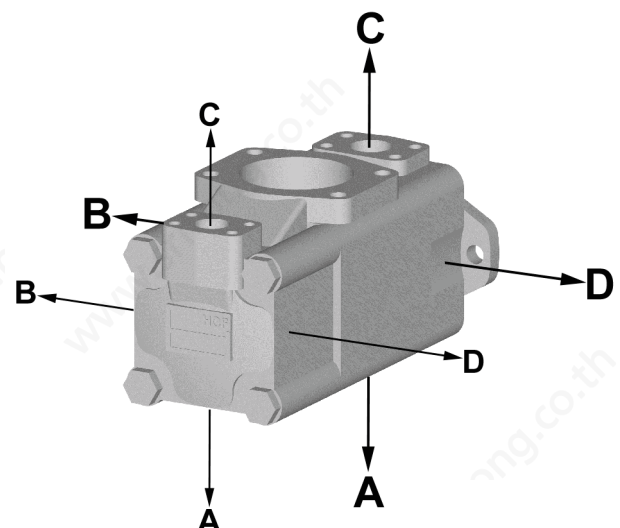
Shaft Rotation (Viewed from shaft end)

Omit - Turn right

L - Turn left



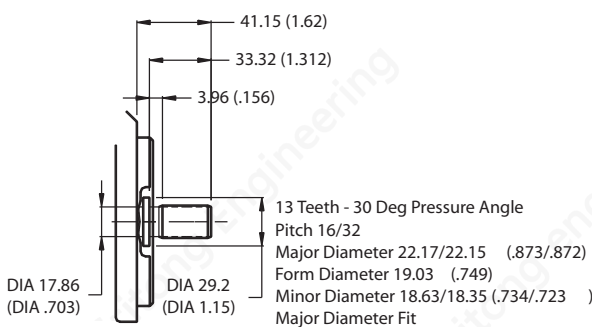
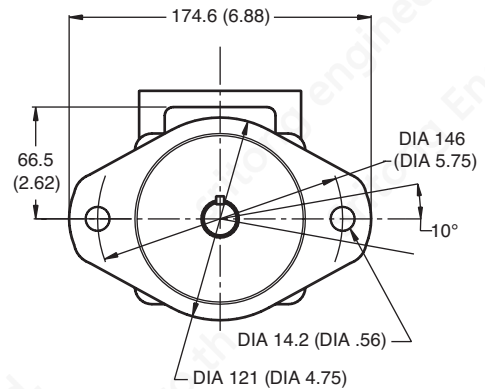
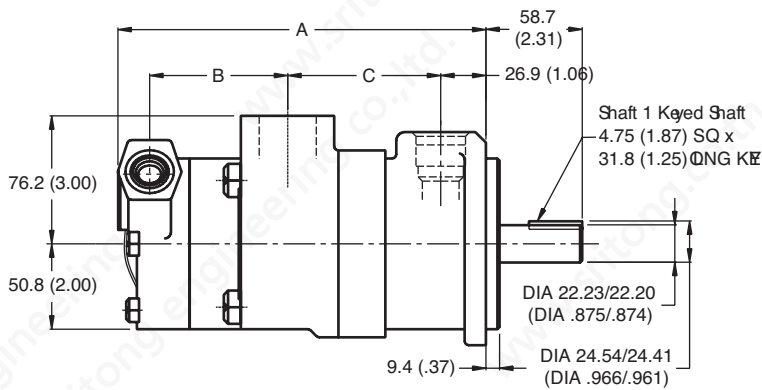
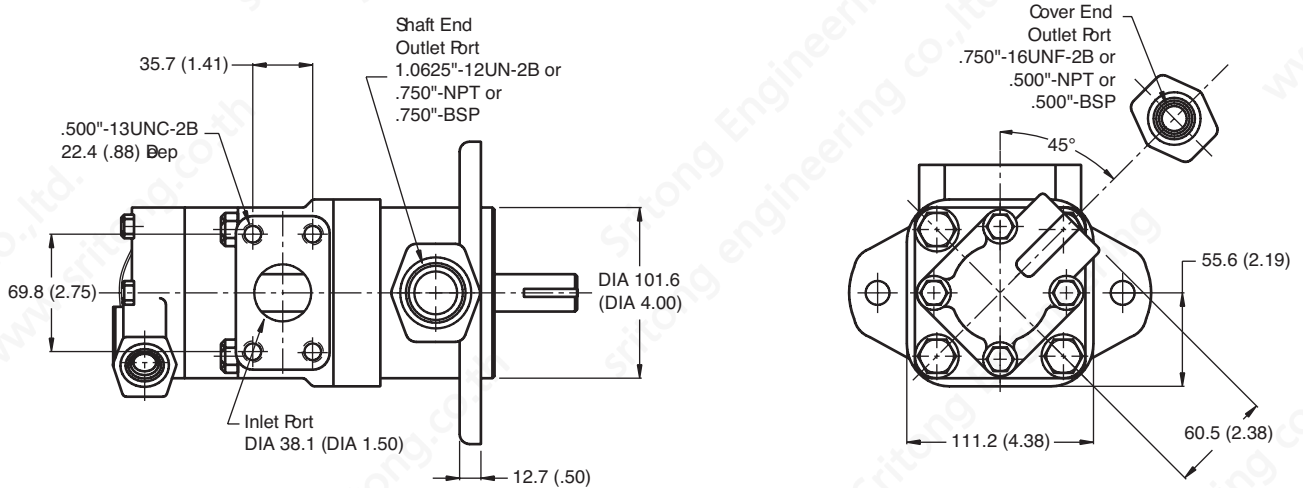
Port Positions for V2010



Port Positions for V2020

Performance Data and Dimensions mm (inch)

Model Series	Cartridge Position	Ring Size Delivery at 1200 r/min & 7 bar (100 psi)	Geometric Displacement	Delivery at 1500 r/min & 7 bar (100 psi)	Maximum Pressure	Maximum Speed	Weight
		USgpm	cm ³ /r (in ³ /r)	L/min (USgpm)	bar (psi)	rpm	
V2010	Shaft End	7	22.8 (1.39)	33.11 (8.75)	172 (2500)	3000	13.6 (30)
		8	26.5 (1.62)	37.85 (10.00)	172 (2500)	2800	
		9	29.7 (1.81)	42.57 (11.25)	172 (2500)	2800	
		11	36.4 (2.22)	52.04 (13.75)	172 (2500)	2500	
		12	39.0 (2.38)	56.77 (15.00)	152 (2200)	2400	
		13	42.4 (2.59)	61.50 (16.25)	152 (2200)	2400	
	Cover End	1	3.3 (0.20)	4.70 (1.25)	172 (2500)	3000	
		2	6.6 (0.40)	9.40 (2.50)	172 (2500)	3000	
		3	9.8 (0.60)	14.20 (3.75)	172 (2500)	3000	
		4	13.1 (0.80)	18.90 (5.00)	172 (2500)	3000	
		5	16.4 (1.00)	23.60 (6.25)	172 (2500)	3000	
		6	19.5 (1.19)	28.40 (7.50)	152 (2200)	3000	
		7	22.8 (1.39)	33.10 (8.75)	138 (2000)	2800	

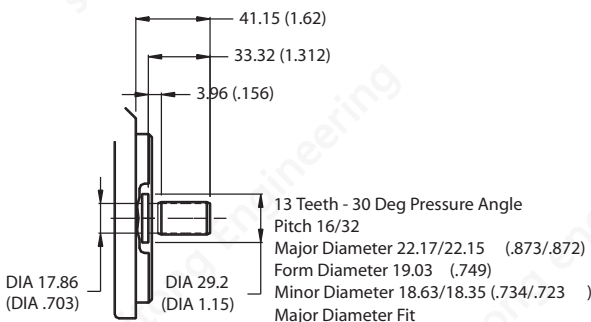
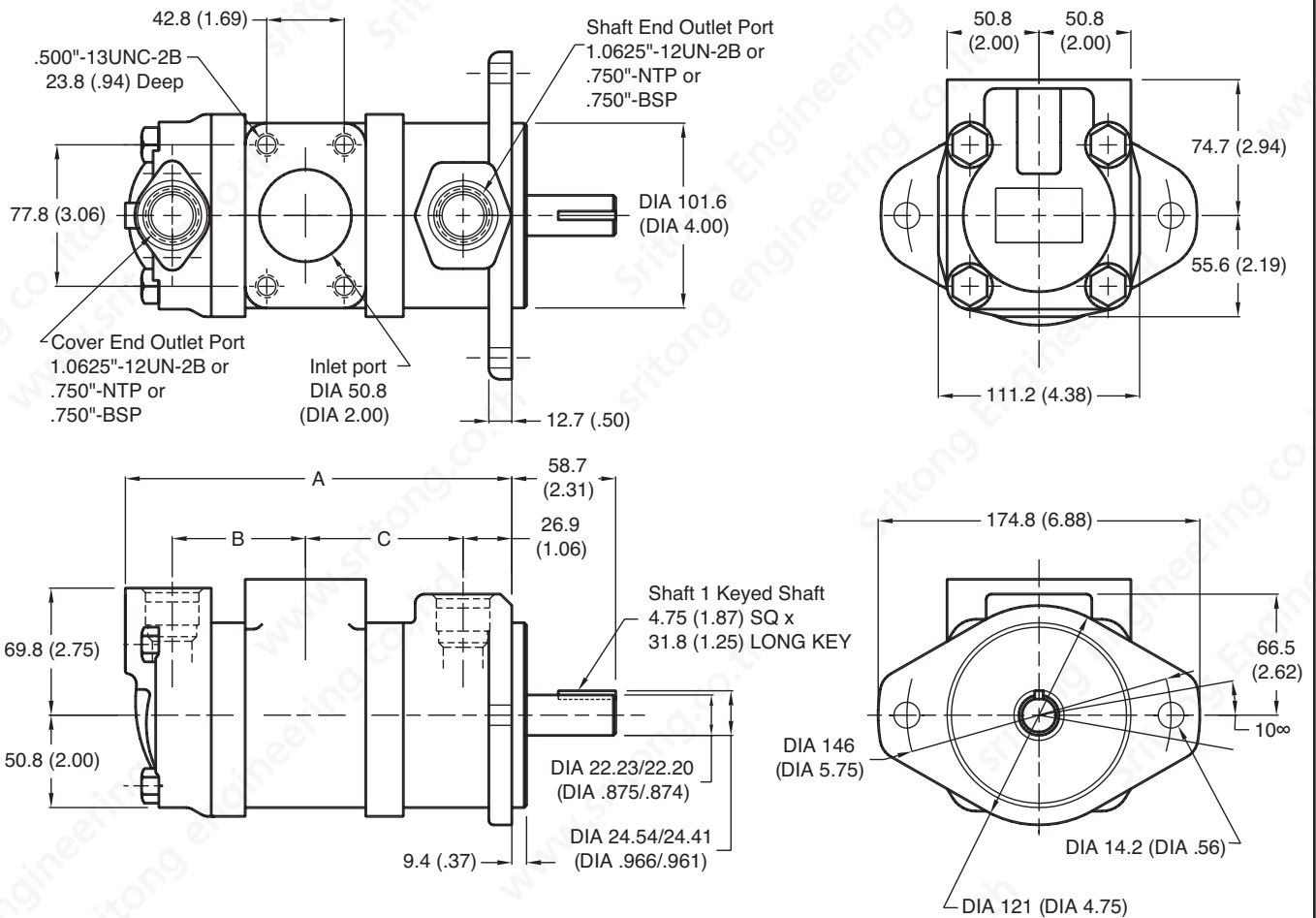


Shaft 11
Splined Shaft

Delivery @ 1200rpm & 7 bar (100 psi)		Dimension		
Shaft End	Cover End	A	B	C
7, 8, 9	1, 2, 3	213.1 (8.39)	75.9 (2.99)	86.4 (3.40)
7, 8, 9	4, 5	219.5 (8.64)	82.3 (3.24)	86.4 (3.40)
7, 8, 9	6, 7	224.5 (8.84)	87.4 (3.44)	86.4 (3.40)
11	1, 2, 3	218.2 (8.59)	75.9 (2.99)	91.2 (3.59)
11	4, 5	224.5 (8.84)	82.3 (3.24)	91.2 (3.59)
11	6, 7	229.6 (9.04)	87.4 (3.44)	91.2 (3.59)
12, 13	1, 2, 3	221.7 (8.73)	75.9 (2.99)	94.7 (3.73)
12, 13	4, 5	227.8 (8.97)	82.3 (3.24)	94.7 (3.73)
12, 13	6, 7	232.9 (9.17)	87.4 (3.44)	94.7 (3.73)

Performance Data and Dimensions mm (inch)

Model Series	Cartridge Position	Ring Size Delivery at 1200 r/min & 7 bar (100 psi)	Geometric Displacement	Delivery at 1500 r/min & 7 bar (100 psi)	Maximum Pressure	Maximum Speed	Weight	
		USgpm	cm ³ /r (in ³ /r)	L/min (USgpm)	bar (psi)	rpm		kg (lb)
V2020	Shaft End	7	22.8 (1.39)	33.11 (8.75)	172 (2500)	3000	15.9 (35)	
		8	26.5 (1.62)	37.85 (10.00)	172 (2500)	2800		
		9	29.7 (1.81)	42.57 (11.25)	172 (2500)	2800		
		11	36.4 (2.22)	52.04 (13.75)	172 (2500)	2500		
		12	39.0 (2.38)	56.77 (15.00)	152 (2200)	2400		
	Cover End	13	42.4 (2.59)	61.50 (16.25)	152 (2200)	2400		
		6	19.5 (1.19)	28.39 (7.50)		3000		
		7	22.8 (1.39)	33.11 (8.75)		3000		
		8	26.5 (1.62)	37.85 (10.00)	172 (2500)	2800		
		9	29.7 (1.81)	42.57 (11.25)	172 (2500)	2800		
		11	36.4 (2.22)	52.04 (13.75)		2500		



Shaft 11
Splined Shaft

Delivery @ 1200 rpm & 7 bar (100 psi)		Dimension		
Shaft End	Cover End	A	B	C
7, 8, 9	6	213.6 (8.41)	73.7 (2.90)	87.1 (3.43)
7, 8, 9	7, 8, 9	220.0 (8.66)	80.0 (3.15)	87.1 (3.43)
11	6	218.7 (8.61)	73.7 (2.90)	92.2 (3.63)
11	7, 8, 9	225.0 (8.86)	80.0 (3.15)	92.2 (3.63)
11	11	229.9 (9.05)	85.1 (3.35)	92.2 (3.63)
12, 13	6	222.3 (8.75)	73.7 (2.90)	95.5 (3.76)
12, 13	7, 8, 9	228.3 (8.99)	80.0 (3.15)	95.5 (3.76)
12, 13	11	233.4 (9.19)	85.1 (3.35)	95.5 (3.76)