

### Features

- \* Medium size, 22mm width solenoid valve, large flow rate.
- \* Lockable manual override for easy operation.
- \* Anodized aluminum body and strict quality control provide a long durability.
- \* Ex-proof coil is available, please refer to page 7-6.



### How to order

<b>BM520</b>		<b>X</b>	-	<b>02</b>	<b>N</b>	-	<b>S</b>	<b>2</b>	<b>LED</b>	<b>E</b>			
22mm valves series		Acting style		Port size	Thread	Solenoid		Voltage	LED	Coil type			
<b>52</b>	5/2 way	<b>Blank</b>	Standard	<b>02</b>	1/4"	<b>Blank</b>	PS	<b>S</b>	Single solenoid	<b>1</b>	110VAC	<b>Blank</b>	DIN
<b>53</b>	5/3 way	<b>X</b>	Exhaust center			<b>N</b>	NPT	<b>D</b>	Double solenoid	<b>2</b>	220VAC	<b>Blank</b>	(W/O LED)
		<b>Y</b>	Pressurized center							<b>9</b>	24VDC	<b>E</b>	Ex-proof

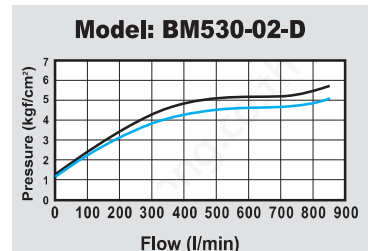
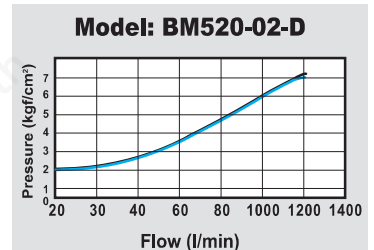
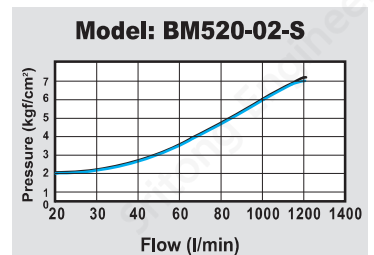
### How to order manifold

<b>MFB520</b>	-	<b>02</b>		<b>N</b>	-	<b>02</b>	
22mm valves series		Port size		Thread		Stations	
		1/4"		<b>Blank</b>	PS	<b>02</b>	2 stations
				<b>N</b>	NPT	<b>03</b>	3 stations
						<b>XX</b>	XX stations

### Specifications

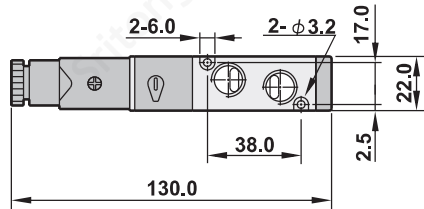
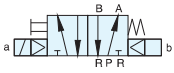
Model	BM520-02-S	BM520-02-D	BM530-02-D
Port size	1/4" , 1/8" (Exhaust ports)		
Fluid	Compressed air		
Acting	Internal pilot		
Sectional area	18mm <sup>2</sup>		14mm <sup>2</sup>
Operating pressure range	1.5~8 kgf/cm <sup>2</sup>		2~8 kgf/cm <sup>2</sup>
Max. operating pressure	9.9 kgf/cm <sup>2</sup>		
Ambient temperature	-10°C ~ 50°C		
Duty cycle	100% ED		
Coil type	DIN (Standard)		
Protection class	IP65 (DIN 40 050)		
Insulation class	F		
Voltage tolerance	±10%		
Standard voltage	220VAC, 110VAC, 24VDC (The other voltage is optional)		
Net weight	235g	335g	445g

### Flow chart

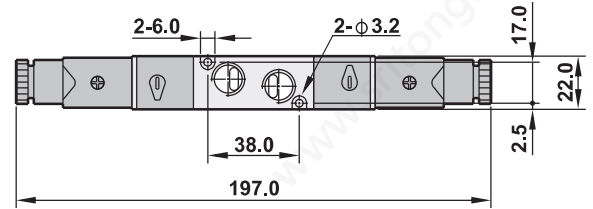


## Dimensions

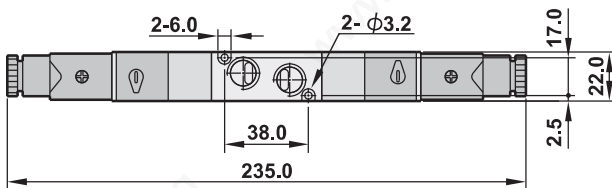
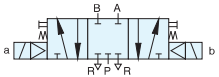
### BM520-02-S



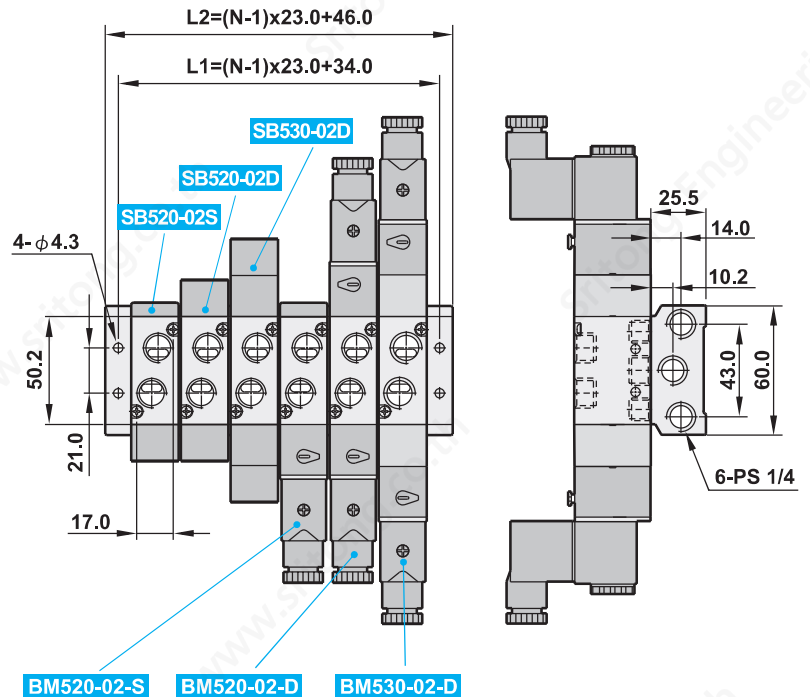
### BM520-02-D



### BM530-02-D



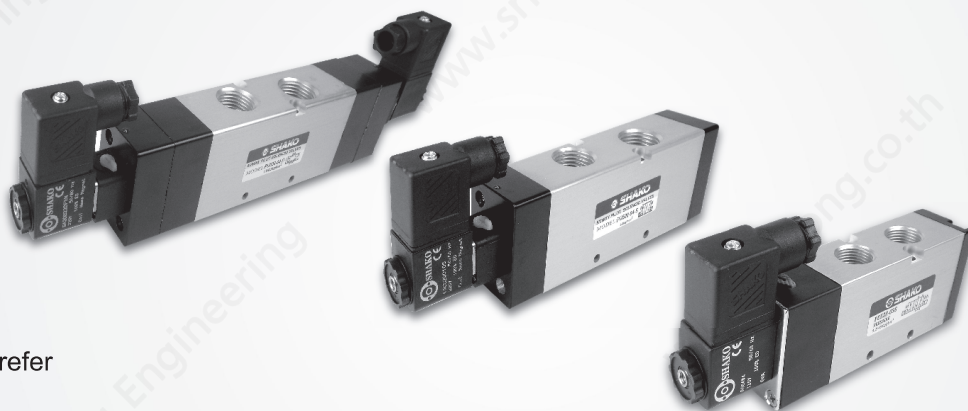
### MFB520-02-06



Number of station (N)	2	3	4	5	6	7	8	9	10
L1	57.0	80.0	103.0	126.0	149.0	172.0	195.0	218.0	241.0
L2	69.0	92.0	115.0	138.0	161.0	184.0	207.0	230.0	253.0

## Features

- \* Medium size and large flow rate.
- \* Lockable manual override for easy operation.
- \* Aluminum body with surface anodizing treatment and strict quality control for long durability.
- \* Ex-proof coil is available, please refer to page 7-6.



## How to order

PU520 X - 02 N - S 2 LED E

PU series		Acting style		Port size	Thread		Solenoid		Voltage		LED	Coil type		
52	5/2 way	Blank	Standard	02	1/4"	Blank	PS	S	Single solenoid	1	110VAC	Blank (W/O LED)	Blank	DIN
53	5/3 way		5/3 way	03	3/8"	N	NPT	D	Double solenoid	2	220VAC			E
		X	Exhaust center	04	1/2"			5/3 way valve is only available for Double solenoid		9	24VDC			
		Y	Pressurized center											

## How to order manifold

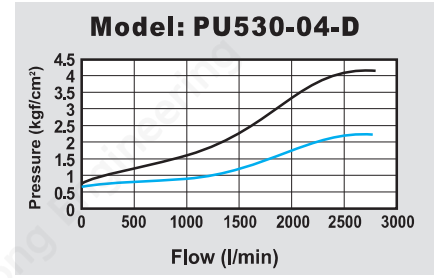
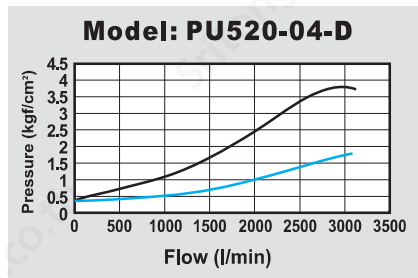
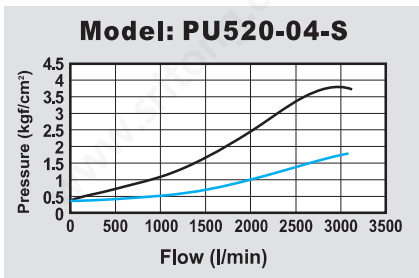
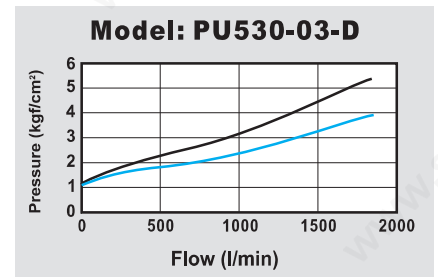
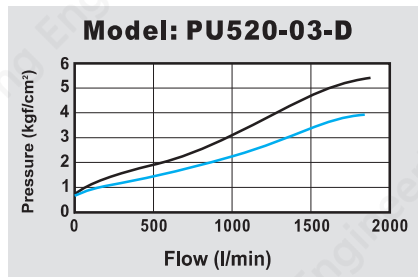
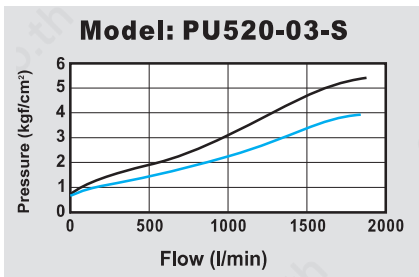
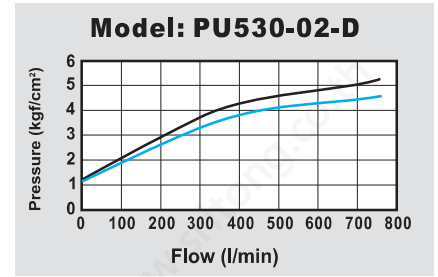
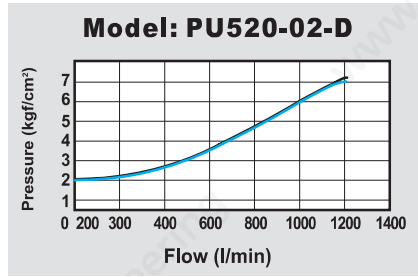
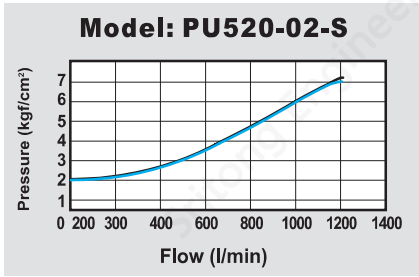
MF520 - 02 N - 02

PU valves series	Port size	Thread		Stations	
	02 1/4"	Blank	PS	02	2 stations
	03 3/8"	N	NPT	03	3 stations
	04 1/2"			XX	XX stations

## Specifications

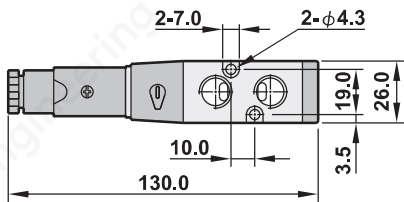
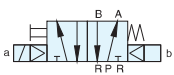
Model	PU520-02-S(D)	PU530-02-D	PU520-03-S(D)	PU530-03-D	PU520-04-S(D)	PU530-04-D
Port size	1/4" , 1/8" (Exhaust ports)		3/8"		1/2"	
Fluid	Compressed air					
Sectional area	18mm <sup>2</sup>	14mm <sup>2</sup>	35mm <sup>2</sup>	32mm <sup>2</sup>	70mm <sup>2</sup>	54mm <sup>2</sup>
Acting	Internal pilot					
Operating pressure range	1.5~8 kgf/cm <sup>2</sup>	2~8 kgf/cm <sup>2</sup>	1.5~8 kgf/cm <sup>2</sup>	2~8 kgf/cm <sup>2</sup>		
Max. operating pressure	9.9 kgf/cm <sup>2</sup>					
Ambient temperature	-10°C ~ 60°C					
Duty cycle	100% ED					
Coil type	DIN (Standard)					
Protection class	IP65 (DIN 40 050)					
Insulation class	F					
Voltage tolerance	±10%					
Standard voltage	220VAC, 110VAC, 24VDC (The other voltage is optional)					
Net weight	270g / 335g	475g	430g / 525g	715g	665g / 770g	1045g

## Flow chart

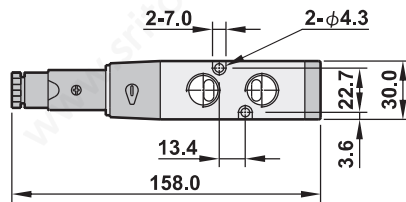


## Dimensions

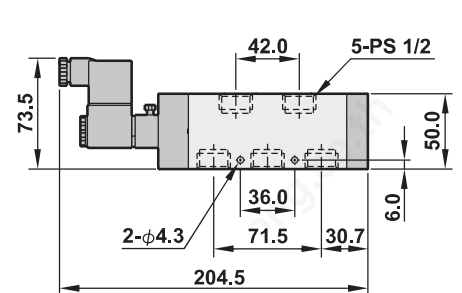
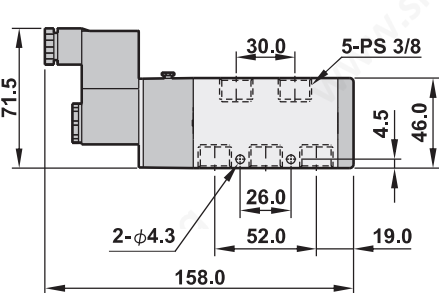
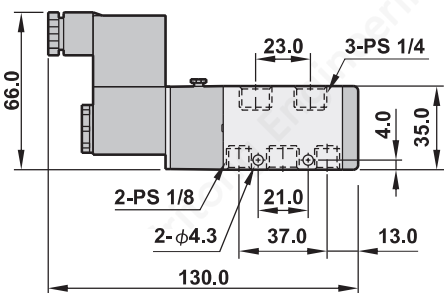
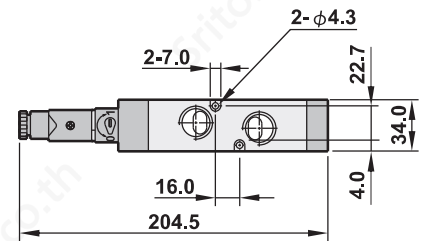
### PU520-02-S



### PU520-03-S

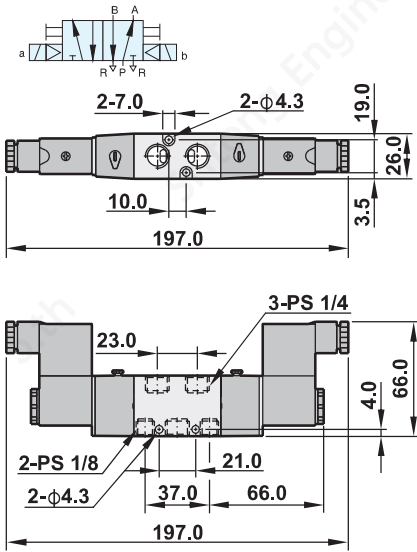


### PU520-04-S

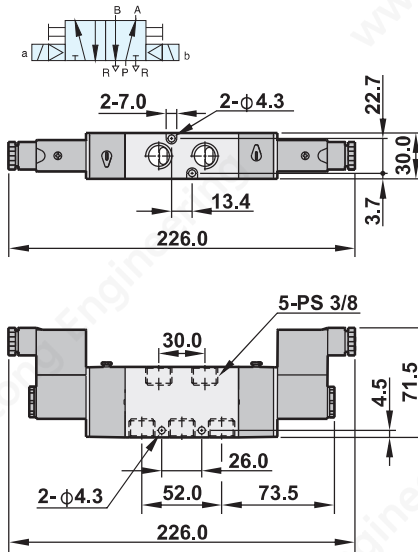


## Dimensions

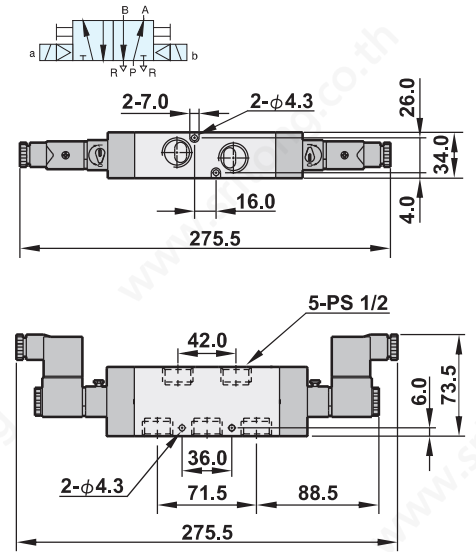
### PU520-02-D



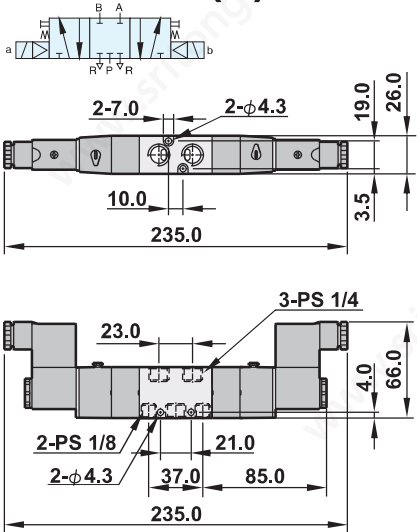
### PU520-03-D



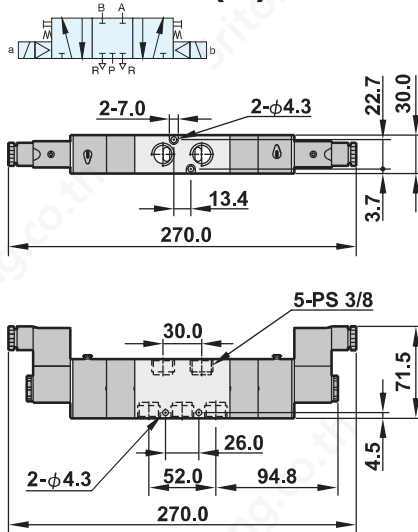
### PU520-04-D



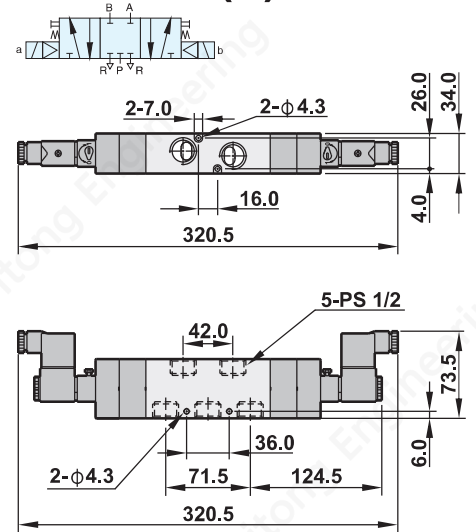
### PU530X(Y)-02D



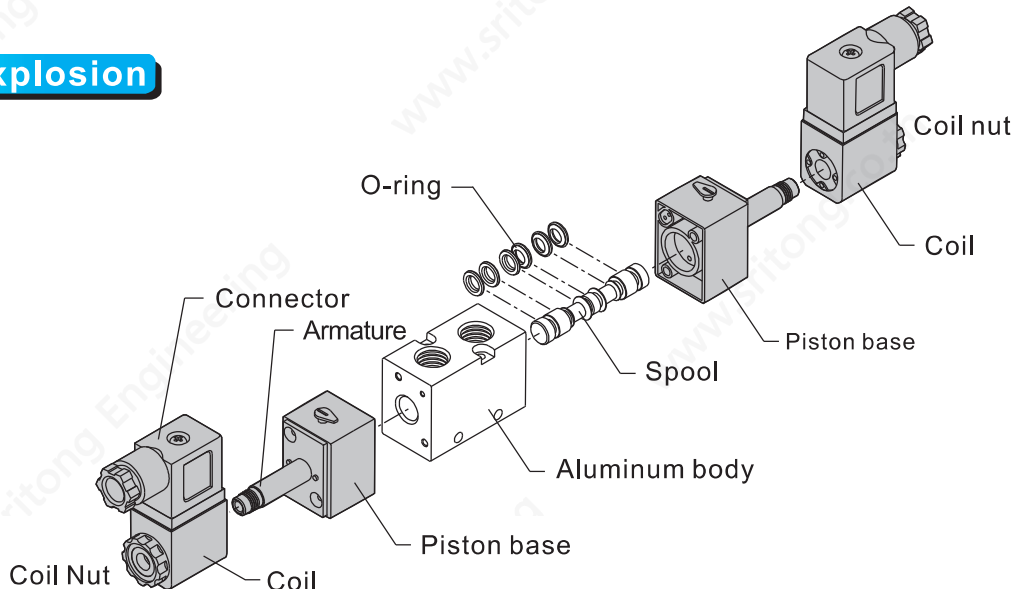
### PU530X(Y)-03D



### PU530X(Y)-04D

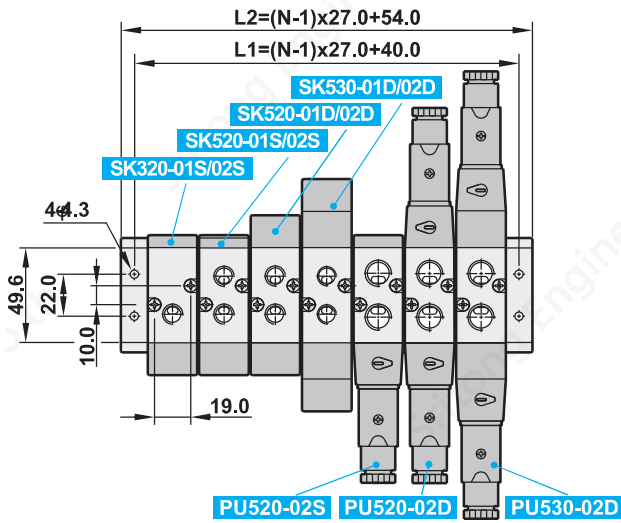


## Explosion



## Dimensions

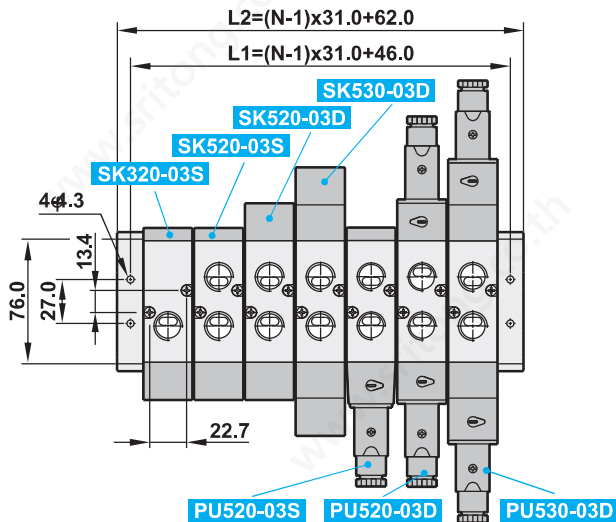
### MF520-02-07



Number of station (N)	L1	L2
2	67.0	81.0
3	94.0	108.0
4	121.0	135.0
5	148.0	162.0
6	175.0	189.0
7	202.0	216.0
8	229.0	243.0
9	256.0	270.0
10	283.0	297.0

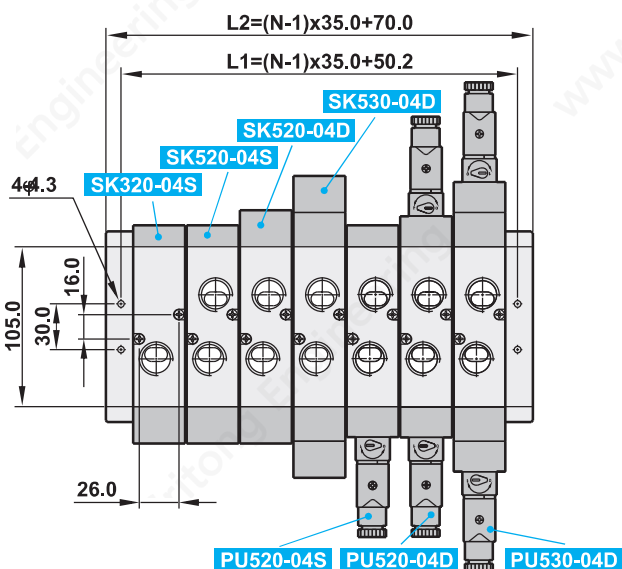
SOLENOID VALVES

### MF520-03-07



Number of station (N)	L1	L2
2	77.0	93.0
3	108.0	124.0
4	139.0	155.0
5	170.0	186.0
6	201.0	217.0
7	232.0	248.0
8	263.0	279.0
9	294.0	310.0
10	325.0	341.0

### MF520-04-07



Number of station (N)	L1	L2
2	85.2	105.0
3	120.2	140.0
4	155.2	175.0
5	190.2	210.0
6	225.2	245.0
7	260.2	280.0
8	295.2	315.0
9	330.2	350.0
10	365.2	385.0

### Features

- \* Suitable for flammable working environments.
- \* The valve is actuated by air for accurate response.



### How to order

SK520 -

02

N

S

SK pneumatic valves series

Port size

Thread

Pneumatic control

52	5/2 way
53	5/3 way

01	1/8"
02	1/4"
03	3/8"
04	1/2"

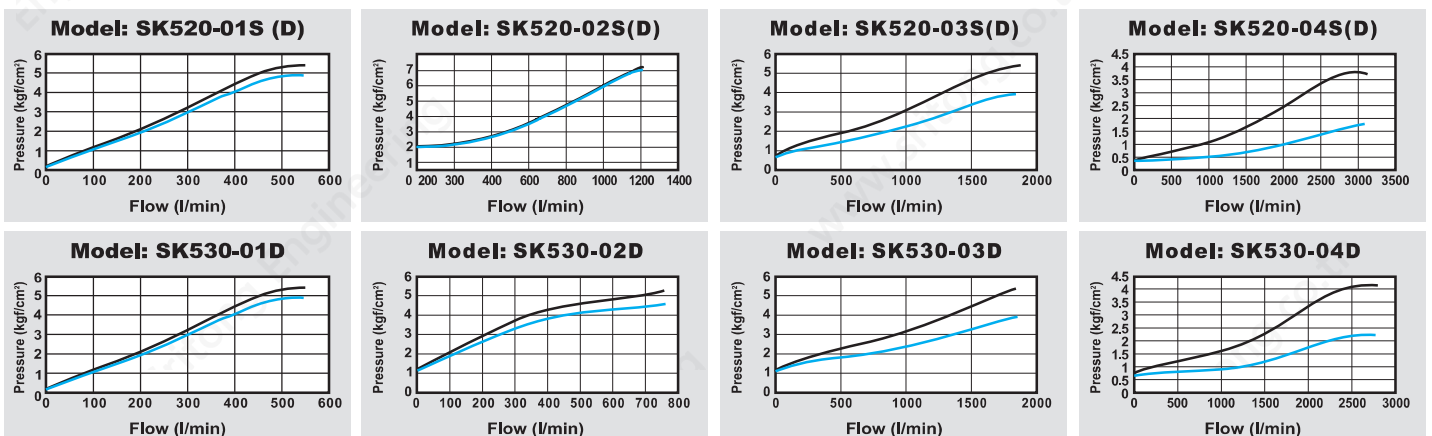
Blank	PS
N	NPT

S	Single pneumatic
D	Double pneumatic
5/3 way valve is only available for double pneumatic control	

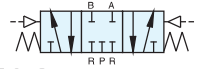
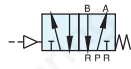
### Specifications

Model	SK520-01S(D)	SK530-01D	SK520-02S(D)	SK530-02D	SK520-03S(D)	SK530-03D	SK520-04S(D)	SK530-04D
Port size	1/8"		1/4"		3/8"		1/2"	
Fluid	Compressed air							
Sectional area	18mm <sup>2</sup>	14mm <sup>2</sup>	18mm <sup>2</sup>	14mm <sup>2</sup>	35mm <sup>2</sup>	32mm <sup>2</sup>	70mm <sup>2</sup>	54mm <sup>2</sup>
Acting	External pilot (1.5 ~ 7 kgf/cm <sup>2</sup> )							
Operating pressure range	0~8kgf/cm <sup>2</sup>	0~7kgf/cm <sup>2</sup>	0~8kgf/cm <sup>2</sup>	0~7kgf/cm <sup>2</sup>	0~8kgf/cm <sup>2</sup>	0~7kgf/cm <sup>2</sup>	0~8kgf/cm <sup>2</sup>	0~7kgf/cm <sup>2</sup>
Max. operating pressure	9.9 kgf/cm <sup>2</sup>							
Ambient temperature	-10°C ~ 80°C							
Net weight	170g/180g	310g	170g/180g	310g	370g/400g	585g	565g/605g	865g

### Flow chart



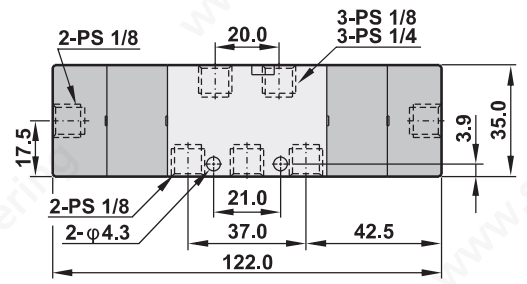
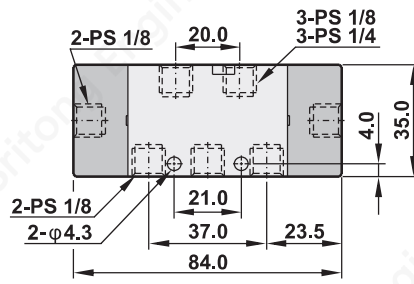
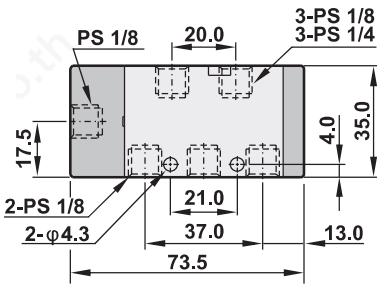
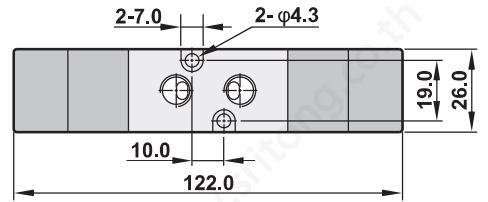
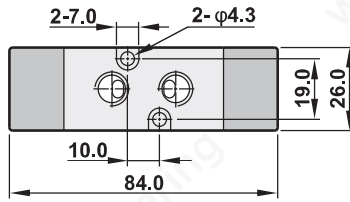
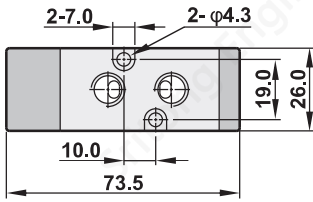
Dimensions



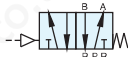
SK520-01S/02S

SK520-01D/02D

SK530-01D/02D



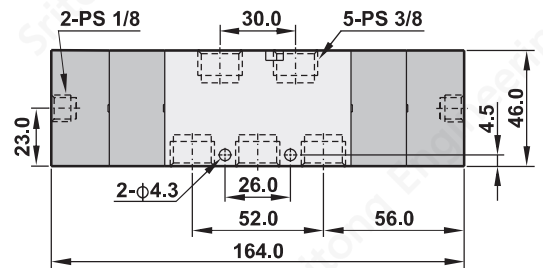
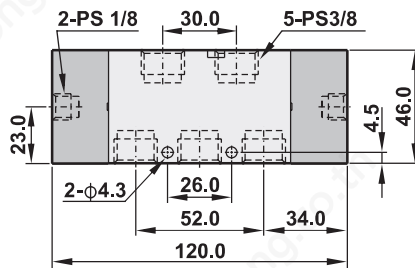
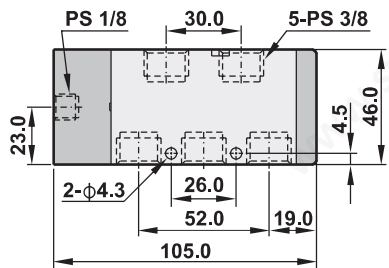
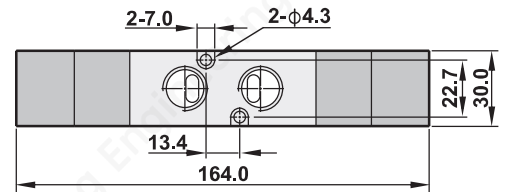
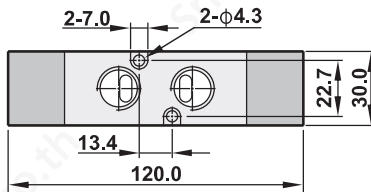
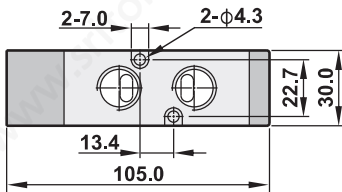
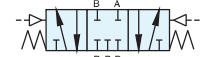
SK520-03S



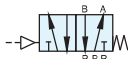
SK520-03D



SK530-03D



SK520-04S



SK520-04D



SK530-04D

