

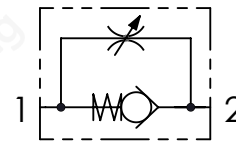


Tenuta a sfera solo per STU180/140/380/120  
Ball sealing only for STU180/140/380/120

01	02
<b>STU</b>	

01	Valvole di controllo flusso unidirezionali (Unidirectional flow control valves)	STU	
02	Dimensione (Size)	BSPP1/8	180
		BSPP1/4	140
		BSPP3/8	380
		BSPP1/2	120
		BSPP3/4	340
		BSPP1	100
		BSPP1-1/4	114
	BSPP1-1/2	112	

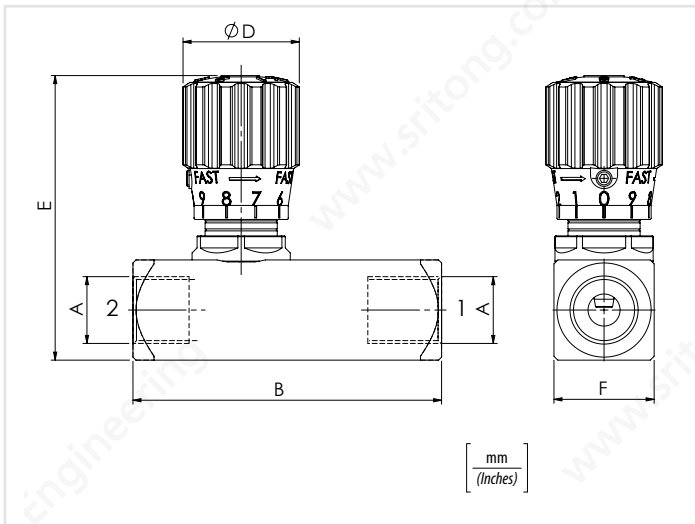
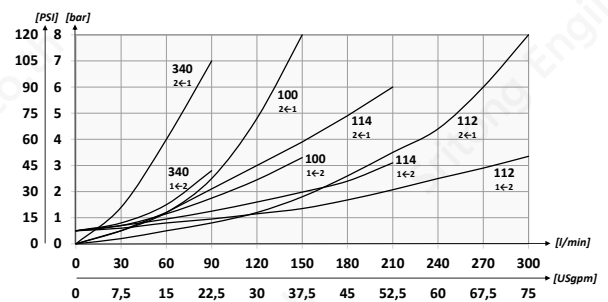
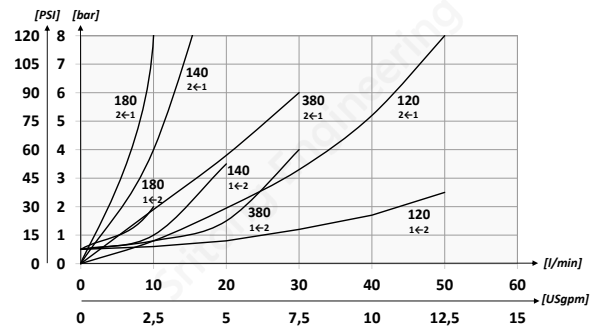
### Schema idraulico - Hydraulic circuit



### Dati tecnici - Technical data

Olio idraulico/Mineral oil	ISO 6743/4 (DIN 51524)	
Viscosità olio/Oil viscosity	15-250 mm <sup>2</sup> /s (15 to 250 cSt)	
Classe di contaminazione max con filtro Max contamination index with filter	ISO 4406:1999 Classe 19/17/14	
Temperatura dell'olio/Oil temperature	-20°C +80°C	-4°F + 176°F
Temperatura ambiente/Ambient temperature	-20°C +50°C	-4°F + 122°F
È indispensabile l'utilizzo di un filtro per proteggere la valvola (filtrazione consigliata 15 µm) It is necessary a filter use to protect the valve (advised filtration 15 µm)		

### Performances



### Caratteristiche tecniche - Technical characteristics

Code Code	A	Portata max (l/min) Max flow (USgpm)	Pressione max (bar) Max pressure (PSI)	B	D	E	F	Peso approssimativo Approx weight kg/lb	
STU180	BSPP1/8	10 (2.6)	400 (5800)	58 (2.28)	20 (0.79)	53 (2.09)	20 (0.79)	0,19 (0.42)	
STU140	BSPP1/4	15 (4)		66 (2.60)				30 (1.18)	71,5 (2.81)
STU380	BSPP3/8	30 (7.9)		77 (3.03)	33 (1.30)	72 (2.83)	30 (1.18)	0,36 (0.80)	
STU120	BSPP1/2	50 (13.2)		91 (3.58)				42 (1.65)	94 (3.70)
STU340	BSPP3/4	80 (21.1)		350 (5075)	112,5 (4.43)	53 (2.09)	121,5 (4.78)	55 (2.17)	1,33 (3)
STU100	BSPP1	150 (39.6)			141 (5.55)				99 (3.90)
STU114	BSPP1-1/4	200 (52.8)	155 (6.10)		168 (6.61)	131,5 (5.18)	65 (2.56)	3,1 (6.8)	
STU112	BSPP1-1/2	300 (79.2)						4,5 (10)	



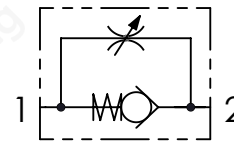
Codice ordinazione  
Ordering code

01	02
<b>STUF</b>	

01	Valvole di controllo flusso unidirezionali (Unidirectional flow control valves)	STUF	
02	Dimensione (Size)	BSP1/8	180
		BSP1/4	140
		BSP3/8	380
		BSP1/2	120
		BSP3/4	340
		BSP1	100
		BSP1-1/4	114
		BSP1-1/2	112

Tenuta a sfera solo per STU180/140/380/120  
Ball sealing only for STU180/140/380/120

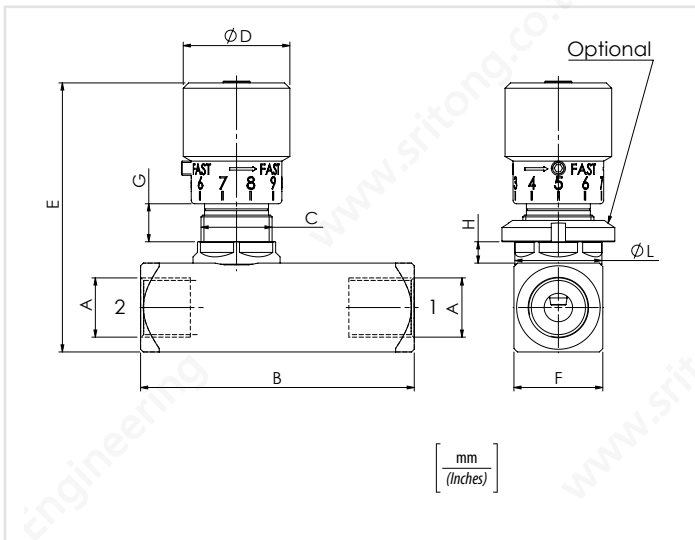
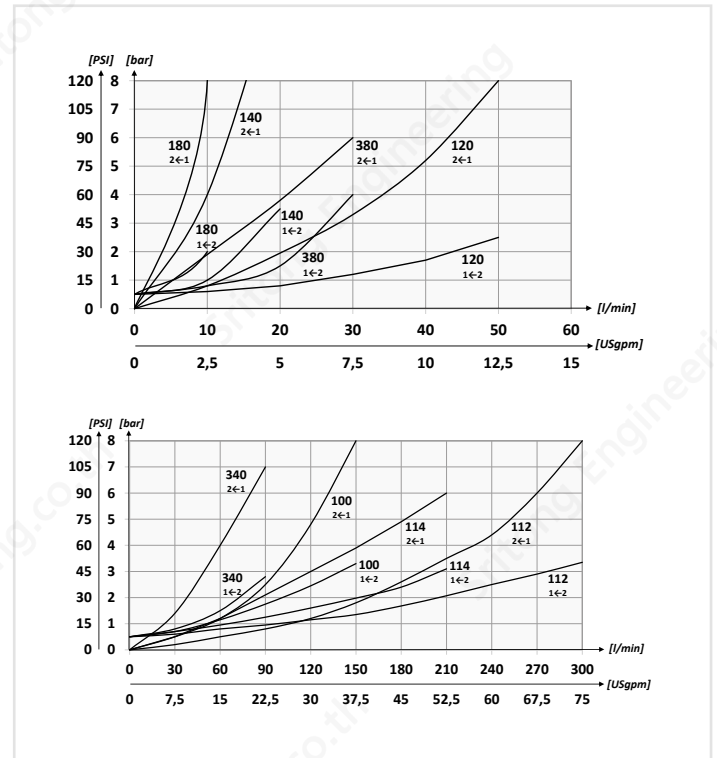
Schema idraulico - Hydraulic circuit



Dati tecnici - Technical data

Olio idraulico/Mineral oil	ISO 6743/4 (DIN 51524)	
Viscosità olio/Oil viscosity	15-250 mm <sup>2</sup> /s (15 to 250 cSt)	
Classe di contaminazione max con filtro Max contamination index with filter	ISO 4406:1999 Classe 19/17/14	
Temperatura dell'olio/Oil temperature	-20°C +80°C	-4°F + 176°F
Temperatura ambiente/Ambient temperature	-20°C +50°C	-4°F + 122°F
È indispensabile l'utilizzo di un filtro per proteggere la valvola (filtrazione consigliata 15 µm) It is necessary a filter use to protect the valve (advised filtration 15 µm)		

Performances

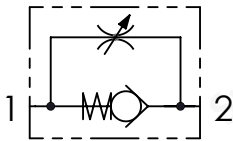


Caratteristiche tecniche - Technical characteristics

Codice Code	A	Portata max (l/min) Max flow (USgpm)	Pressione max (bar) Max pressure (PSI)	B	C	D	E	F	G	H	L	Optional Code	Peso approssimativo Approx weight kg/lb
STUF180	BSP1/8	10 (2.6)	400 (5800)	58 (2.28)	M15x1	20 (0.79)	60,5 (2.38)	20 (0.79)	8 (0.31)	5,5 (0.21)	19,5 (0.76)	84100031	0,20 (0.44)
STUF140	BSP1/4	15 (4)		66 (2.60)	M20x1	30 (1.18)	75 (2.95)	25 (0.98)	7,5 (0.29)	6 (0.23)	24,5 (0.96)	84100022	0,38 (0.84)
STUF380	BSP3/8	30 (7.9)		77 (3.03)	M25x1,5	33 (1.30)	81 (3.19)	30 (1.18)	9 (0.35)	7 (0.27)	29,5 (1.16)	84100023	0,40 (0.88)
STUF120	BSP1/2	50 (13.2)		91 (3.58)	M35x1,5	42 (1.65)	110 (4.33)	40 (1.57)	15,5 (0.61)	8 (0.31)	39,5 (1.55)	84100024	1,45 (3.2)
STUF340	BSP3/4	80 (21.1)		112,5 (4.43)	M45x1,5	53 (2.09)	137 (5.39)	55 (2.17)	13,5 (0.53)	10 (0.39)	50 (1.96)	84100030	2 (4.4)
STUF100	BSP1	150 (39.6)		141 (5.55)			115 (4.53)	45 (1.77)					
STUF114	BSP1-1/4	200 (52.8)	350 (5075)	155 (6.10)		147 (5.79)	65 (2.56)						3,3 (7.25)
STUF112	BSP1-1/2	300 (79.2)		168 (6.61)									4,7 (10.3)

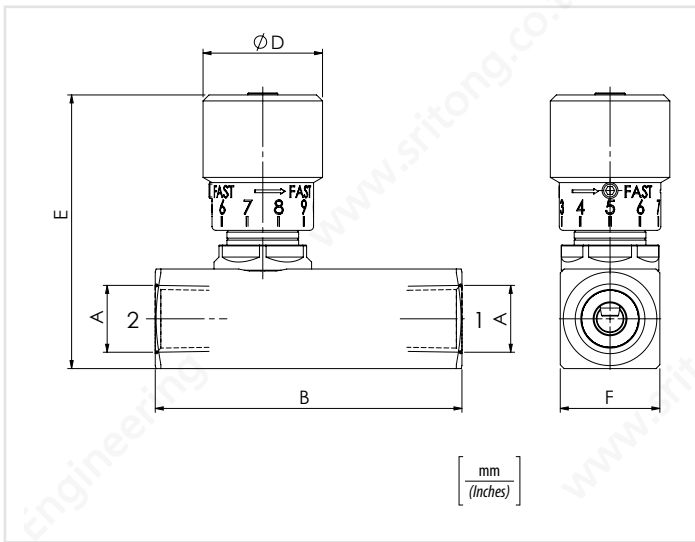


Schema idraulico - Hydraulic circuit



### Dati tecnici - Technical data

Olio idraulico/Mineral oil	ISO 6743/4 (DIN 51524)	
Viscosità olio/Oil viscosity	15-250 mm <sup>2</sup> /s (15 to 250 cSt)	
Classe di contaminazione max con filtro Max contamination index with filter	ISO 4406:1999 Classe 19/17/14	
Temperatura dell'olio/Oil temperature	-20°C +80°C	-4°F + 176°F
Temperatura ambiente/Ambient temperature	-20°C +50°C	-4°F + 122°F
È indispensabile l'utilizzo di un filtro per proteggere la valvola (filtrazione consigliata 15 µm) It is necessary a filter use to protect the valve (advised filtration 15 µm)		

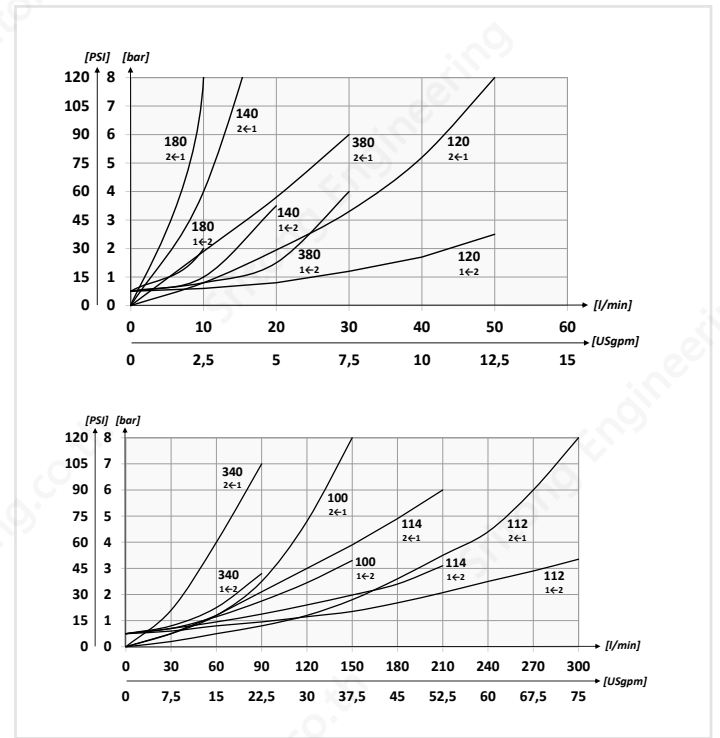


### Codice ordinazione Ordering code

01	02	03
<b>STU</b>		<b>N</b>

<b>01</b>	Valvole di controllo flusso unidirezionali (Unidirectional flow control valves)	<b>STU</b>	
<b>02</b>	Dimensione (Size)	NPTF 1/8	<b>180</b>
		NPTF 1/4	<b>140</b>
		NPTF 3/8	<b>380</b>
		NPTF 1/2	<b>120</b>
		NPTF 3/4	<b>340</b>
		NPTF 1	<b>100</b>
		NPTF 1-1/4	<b>114</b>
<b>03</b>	Filettatura (Thread)	NPTF 1-1/2	<b>112</b>
		NPTF	<b>N</b>

### Performances

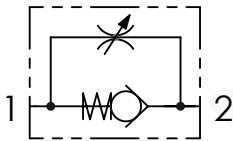


### Caratteristiche tecniche - Technical characteristics

Codice Code	A	Portata max (l/min) Max flow (USgpm)	Pressione max (bar) Max pressure (PSI)	B	D	E	F	Peso approssimativo Approx weight kg/lb
<b>STU180N</b>	<b>NPTF 1/8</b>	<b>10 (2.6)</b>	<b>400 (5800)</b>	<b>58 (2.28)</b>	<b>20 (0.79)</b>	<b>53 (2.08)</b>	<b>20 (0.79)</b>	<b>0,19 (0.42)</b>
<b>STU140N</b>	<b>NPTF 1/4</b>	<b>15 (4)</b>		<b>66 (2.60)</b>				<b>0,37 (0.75)</b>
<b>STU380N</b>	<b>NPTF 3/8</b>	<b>30 (7.9)</b>		<b>77 (3.03)</b>	<b>30 (1.18)</b>	<b>68 (2.68)</b>	<b>25 (0.98)</b>	<b>0,40 (0.9)</b>
<b>STU120N</b>	<b>NPTF 1/2</b>	<b>50 (13.2)</b>		<b>91 (3.58)</b>	<b>33 (1.30)</b>	<b>72 (2.83)</b>	<b>30 (1.18)</b>	<b>0,60 (1.3)</b>
<b>STU340N</b>	<b>NPTF 3/4</b>	<b>80 (21.1)</b>		<b>112,5 (4.43)</b>	<b>42 (1.65)</b>	<b>94 (3.70)</b>	<b>40 (1.57)</b>	<b>1,40 (3.09)</b>
<b>STU100N</b>	<b>NPTF 1</b>	<b>150 (39.6)</b>		<b>350 (5075)</b>	<b>141 (5.55)</b>	<b>53 (2.09)</b>	<b>99 (3.90)</b>	<b>45 (1.77)</b>
<b>STU114N</b>	<b>NPTF 1-1/4</b>	<b>200 (52.8)</b>	<b>155 (6.10)</b>		<b>121,5 (4.78)</b>			
<b>STU112N</b>	<b>NPTF 1-1/2</b>	<b>300 (79.2)</b>	<b>168 (6.61)</b>		<b>131,5 (5.17)</b>	<b>65 (2.56)</b>	<b>4,5 (10)</b>	

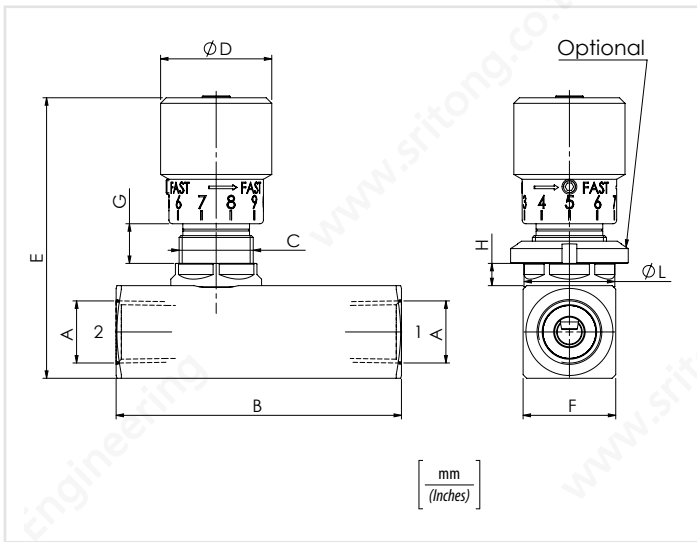


Schema idraulico - Hydraulic circuit



Dati tecnici - Technical data

Olio idraulico/Mineral oil	ISO 6743/4 (DIN 51524)	
Viscosità olio/Oil viscosity	15-250 mm <sup>2</sup> /s (15 to 250 cSt)	
Classe di contaminazione max con filtro Max contamination index with filter	ISO 4406:1999 Classe 19/17/14	
Temperatura dell'olio/Oil temperature	-20°C +80°C	-4°F + 176°F
Temperatura ambiente/Ambient temperature	-20°C +50°C	-4°F + 122°F
È indispensabile l'utilizzo di un filtro per proteggere la valvola (filtrazione consigliata 15 µm) It is necessary a filter use to protect the valve (advised filtration 15 µm)		

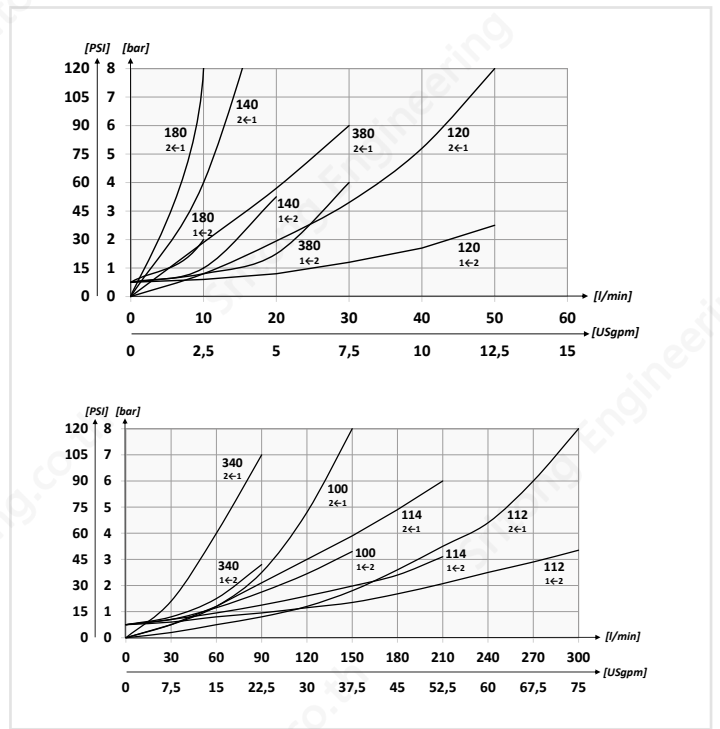


Codice ordinazione  
Ordering code

01	02	03
<b>STUF</b>		<b>N</b>

01	Valvole di controllo flusso unidirezionali (Unidirectional flow control valves)	<b>STUF</b>
02	Dimensione (Size)	NPTF 1/8 <b>180</b>
		NPTF 1/4 <b>140</b>
		NPTF 3/8 <b>380</b>
		NPTF 1/2 <b>120</b>
		NPTF 3/4 <b>340</b>
		NPTF 1 <b>100</b>
		NPTF 1-1/4 <b>114</b>
03	Filettatura (Thread)	NPTF 1-1/2 <b>112</b>
		NPTF <b>N</b>

Performances

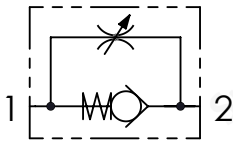


Caratteristiche tecniche - Technical characteristics

Codice Code	A	Portata max (l/min) Max flow (USgpm)	Pressione max (bar) Max pressure (PSI)	B	C	D	E	F	G	H	L	Optional Code	Peso approssimativo Approx weight kg/lb	
<b>STUF180N</b>	NPTF 1/8	10 (2.6)	400 (5800)	58 (2.28)	M15x1	20 (0.79)	60,5 (2.38)	20 (0.79)	8 (0.31)	5,5 (0.22)	19,5 (0.77)	84100031	0,20 (0.44)	
<b>STUF140N</b>	NPTF 1/4	15 (4)		66 (2.60)	M20x1	30 (1.18)	75 (2.95)	25 (0.98)	7,5 (0.30)	6 (0.24)	24,5 (0.96)	84100022	0,40 (0.88)	
<b>STUF380N</b>	NPTF 3/8	30 (7.9)		77 (3.03)	M25x1,5	33 (1.30)	81 (3.19)	30 (1.18)	9 (0.35)	7 (0.28)	29,5 (1.16)	84100023	0,63 (1.40)	
<b>STUF120N</b>	NPTF 1/2	50 (13.2)		91 (3.58)	M35x1,5	42 (1.65)	110 (4.33)	40 (1.57)	15,5 (0.61)	8 (0.31)	39,5 (1.56)	84100024	1,5 (3.3)	
<b>STUF340N</b>	NPTF 3/4	80 (21.1)		112,5 (4.43)	M45x1,5	53 (2.09)	137 (5.39)	55 (2.17)	13,5 (0.53)	10 (0.39)	50 (1.97)	84100030	3,2 (7.05)	
<b>STUF100N</b>	NPTF 1	150 (39.6)		141 (5.55)			147 (5.79)	65 (2.56)						4,7 (10.3)
<b>STUF114N</b>	NPTF 1-1/4	200 (52.8)		350 (5075)	155 (6.10)									
<b>STUF112N</b>	NPTF 1-1/2	300 (79.2)	168 (6.61)											



Schema idraulico - Hydraulic circuit



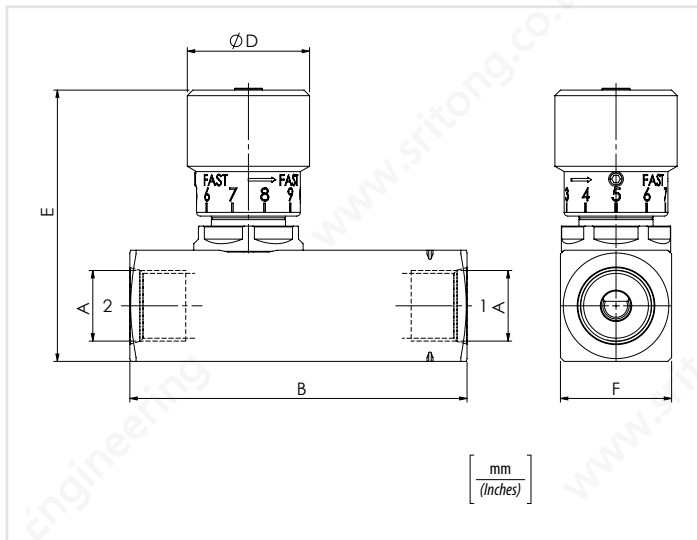
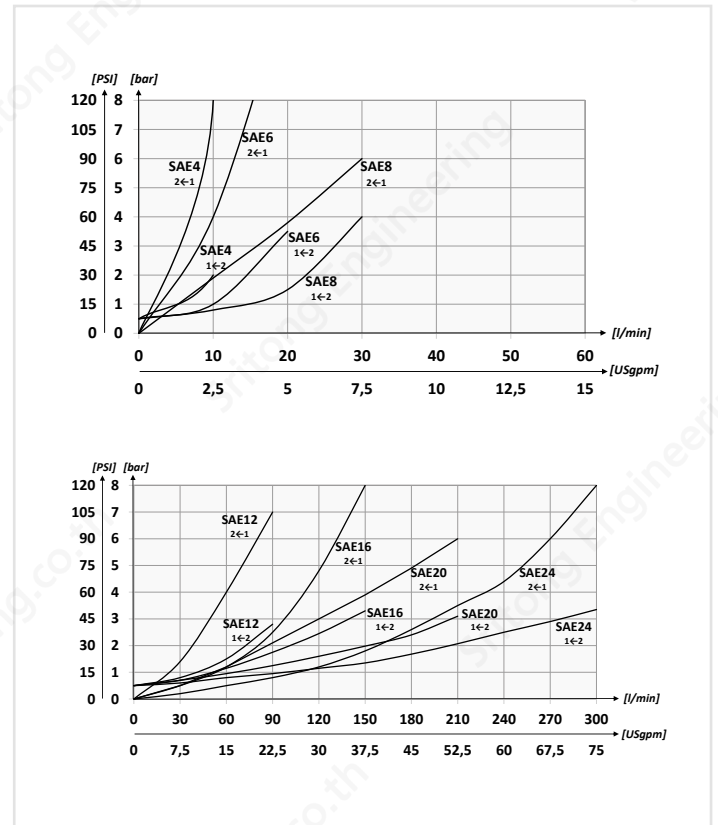
Codice ordinazione Ordering code	01	02
	<b>STU</b>	

<b>01</b>	Valvole di controllo flusso unidirezionali (Unidirectional flow control valves)	<b>STU</b>	
<b>02</b>	Dimensione (Size)	7/16-20UNF	<b>4</b>
		9/16 18UNF	<b>6</b>
		3/4-16UNF	<b>8</b>
		1-1/16-12UN	<b>12</b>
		1-5/16-12UN	<b>16</b>
		1-5/8-12UN	<b>20</b>
		1-7/8-12UN	<b>24</b>

**Dati tecnici - Technical data**

Olio idraulico/Mineral oil	ISO 6743/4 (DIN 51524)	
Viscosità olio/Oil viscosity	15-250 mm <sup>2</sup> /s (15 to 250 cSt)	
Classe di contaminazione max con filtro Max contamination index with filter	ISO 4406:1999 Classe 19/17/14	
Temperatura dell'olio/Oil temperature	-20°C +80°C	-4°F + 176°F
Temperatura ambiente/Ambient temperature	-20°C +50°C	-4°F + 122°F
È indispensabile l'utilizzo di un filtro per proteggere la valvola (filtrazione consigliata 15 µm) It is necessary a filter use to protect the valve (advised filtration 15 µm)		

**Performances**

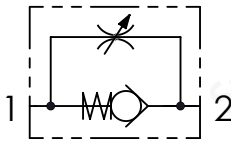


**Caratteristiche tecniche - Technical characteristics**

Codice Code	A	Portata max (l/min) Max flow (USgpm)	Pressione max (bar) Max pressure (PSI)	B	D	E	F	Peso approssimativo Approx weight kg/lb
<b>STU4</b>	7/16-20UNF	15 (4)	400 (5800)	66 (2.60)	30 (1.18)	68 (2.68)	25 (0.98)	0,39 (0.85)
<b>STU6</b>	9/16 18UNF	30 (7.9)		70,5 (2.78)				
<b>STU8</b>	3/4-16UNF	50 (13.2)		91 (3.58)				
<b>STU12</b>	1-1/16-12UN	80 (21.1)	350 (5075)	112,5 (4.43)	42 (1.65)	94 (3.70)	40 (1.57)	1,28 (2.80)
<b>STU16</b>	1-5/16-12UN	150 (39.6)		141 (5.55)				
<b>STU20</b>	1-5/8-12UN	200 (52.8)		155 (6.10)				
<b>STU24</b>	1-7/8-12UN	300 (79.2)		168 (6.61)	53 (2.09)	121,5 (4.78)	55 (2.17)	3,06 (6.73)
						131,5 (5.18)	65 (2.56)	4,5 (10)



Schema idraulico - Hydraulic circuit



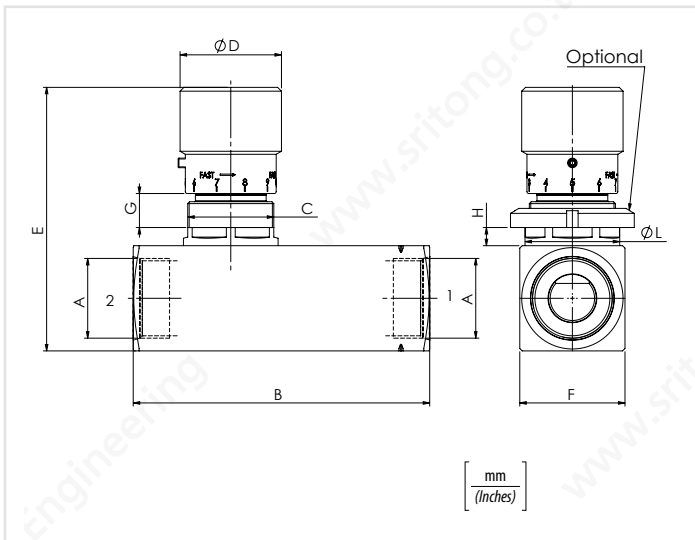
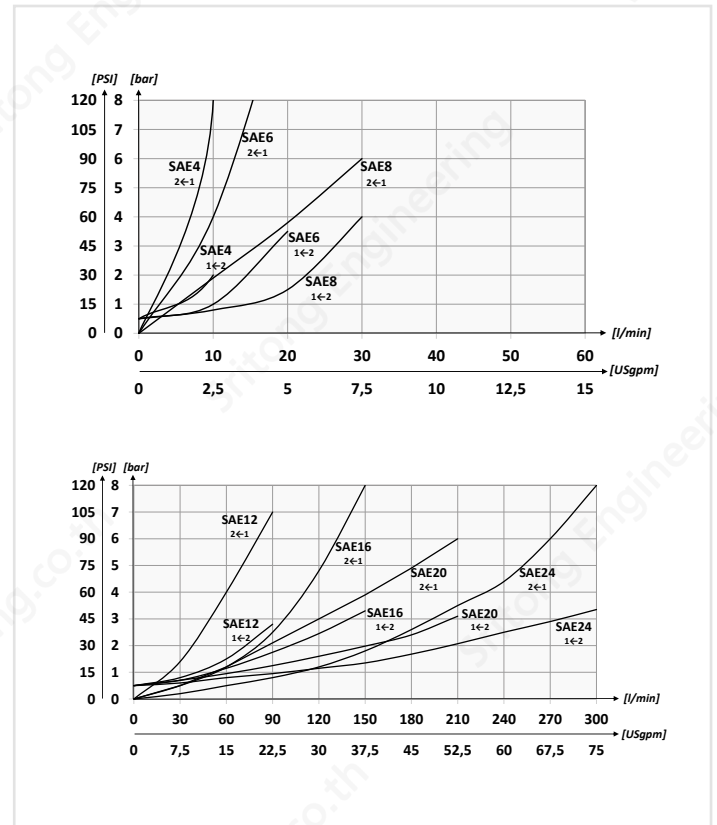
Codice ordinazione Ordering code	01	02
	<b>STUF</b>	

01	Valvole di controllo flusso unidirezionali (Unidirectional flow control valves)	STUF
02	Dimensione (Size)	7/16-20UNF <b>4</b>
		9/16-18UNF <b>6</b>
		3/4-16UNF <b>8</b>
		1-1/16-12UN <b>12</b>
		1-5/16-12UN <b>16</b>
		1-5/8-12UN <b>20</b>
		1-7/8-12UN <b>24</b>

Dati tecnici - Technical data

Olio idraulico/Mineral oil	ISO 6743/4 (DIN 51524)	
Viscosità olio/Oil viscosity	15-250 mm <sup>2</sup> /s (15 to 250 cSt)	
Classe di contaminazione max con filtro Max contamination index with filter	ISO 4406:1999 Classe 19/17/14	
Temperatura dell'olio/Oil temperature	-20°C +80°C	-4°F + 176°F
Temperatura ambiente/Ambient temperature	-20°C +50°C	-4°F + 122°F
È indispensabile l'utilizzo di un filtro per proteggere la valvola (filtrazione consigliata 15 µm) It is necessary a filter use to protect the valve (advised filtration 15 µm)		

Performances



Caratteristiche tecniche - Technical characteristics

Codice Code	A	Portata max (l/min) Max flow (USgpm)	Pressione max (bar) Max pressure (PSI)	B	C	D	E	F	G	H	L	Optional Code	Peso approssimativo Approx weight kg/lb							
<b>STUF4</b>	<b>7/16-20UNF</b>	<b>15 (4)</b>	<b>400 (5800)</b>	<b>66 (2.60)</b>	<b>M20x1</b>	<b>30 (1.18)</b>	<b>75 (2.95)</b>	<b>25 (0.98)</b>	<b>7,5 (0.30)</b>	<b>6 (0.24)</b>	<b>24,5 (0.96)</b>	<b>84100022</b>	<b>0,41 (0.90)</b>							
<b>STUF6</b>	<b>9/16 18UNF</b>	<b>30 (7.9)</b>		<b>70,5 (2.78)</b>									<b>0,42 (0.92)</b>							
<b>STUF8</b>	<b>3/4-16UNF</b>	<b>50 (13.2)</b>		<b>91 (3.58)</b>	<b>M25x1,5</b>								<b>33 (1.30)</b>	<b>81 (3.19)</b>	<b>30 (1.18)</b>	<b>9 (0.35)</b>	<b>7 (0.28)</b>	<b>29,5 (1.16)</b>	<b>84100023</b>	<b>0,63 (1.40)</b>
<b>STUF12</b>	<b>1-1/16-12UN</b>	<b>80 (21.1)</b>		<b>112,5 (4.43)</b>	<b>M35x1,5</b>								<b>42 (1.65)</b>	<b>110 (4.33)</b>	<b>40 (1.57)</b>	<b>15,5 (0.61)</b>	<b>8 (0.31)</b>	<b>39,5 (1.56)</b>	<b>84100024</b>	<b>1,40 (3.10)</b>
<b>STUF16</b>	<b>1-5/16-12UN</b>	<b>150 (39.6)</b>		<b>141 (5.55)</b>	<b>M45x1,5</b>								<b>53 (2.09)</b>	<b>115 (4.53)</b>	<b>45 (1.77)</b>	<b>13,5 (0.53)</b>	<b>10 (0.39)</b>	<b>50 (1.97)</b>	<b>84100030</b>	<b>2 (4.4)</b>
<b>STUF20</b>	<b>1-5/8-12UN</b>	<b>200 (52.8)</b>		<b>350 (5075)</b>	<b>155 (6.10)</b>								<b>M45x1,5</b>	<b>137 (5.39)</b>	<b>55 (2.17)</b>	<b>10 (0.39)</b>	<b>50 (1.97)</b>	<b>84100030</b>	<b>3,3 (7.25)</b>	
<b>STUF24</b>	<b>1-7/8-12UN</b>	<b>300 (79.2)</b>		<b>168 (6.61)</b>		<b>147 (5.79)</b>	<b>65 (2.56)</b>					<b>4,7 (10.3)</b>								