

2

How to order

Series No.	Port Size	Thread Type
QS:Shuttle valve	06:1/8" 08:1/4"	Blank: G P : PT T : NPT

Order sample:
QS series shuttle valve, port size: 1/4", G thread,
the ERP code is: QS-08

Specification

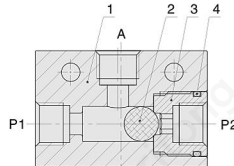
Model (mm)	QS-06	QS-08
Working medium	Clean air(After 40 μm filtration)	
Working Pressure (psi)	7~116	
Guaranteed pressure (psi)	174	
Working temperature (F)	-5~60°C(-4~158 F)(No freezing)	
Port size	1/8 ①	1/4 ①

① G、PT、NPT thread type is optional.

Product Features

Valve provides complete control for the function of your pneumatic system.

Internal Structure



No.	Name
1	Valve body
2	Rubber ball
3	End cover
4	O-ring

Main Dimension

Model	A	B	C	D	E	F	G	H
QS-06	24	40	4.3	22	27	18	10	1/8
QS-08	35	50	5.5	27	35	22	13	1/4

