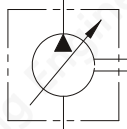
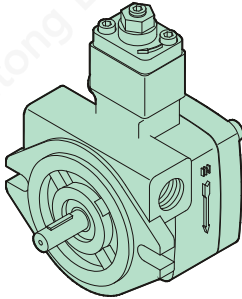
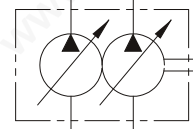
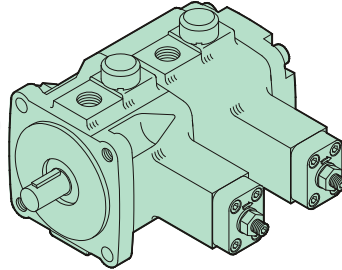




PVF-***



PVDF-**



PVF Ordering Code - Single Pumps

PVF	-12		-70		-11
Series No.	Outlet flow at 3.5bar, 1800rpm lpm		Operating pressure range bar		Design No.
PVF Flange mounting	Code	Outlet flow	Code	Pressure range	
	12	12lpm	20	8~20bar	
	20	20lpm	35	15~35bar	
	30	30lpm	55	30~55bar	
	40	40lpm	70	50~70bar	
	Factory setting Qmax.		Factory setting Pmin.		

PVDF Ordering Code - Double Pumps

PVDF	-3		70		-3		70		-11
Series No,	Shaft end pump				Cover end pump				Design No.
	Outlet flow at 3.5bar, 1800rpm lpm		Operating pressure range bar		Outlet flow at 3.5bar, 1800rpm lpm		Operating pressure range bar		
PVDF Flange mounting	Code	Outlet flow	Code	Pressure range	Code	Outlet flow	Code	Pressure range	11:PT(Rc) 1180:PF(G) 1190:NPT
	3	30lpm	20	8~20bar	3	30lpm	20	8~20bar	
	4	40lpm	35	15~35bar	4	40lpm	35	15~35bar	
	Factory setting Qmax.		55	30~55bar	Factory setting Qmax.		55	30~55bar	
			70	50~70bar			70	50~70bar	
			Factory setting Pmin.				Factory setting Pmin.		

PVF/PVDF Pumps Speed Limits

Minimum speed:800rpm
Maximum speed:1800rpm

PVF/PVDF Pumps Weight

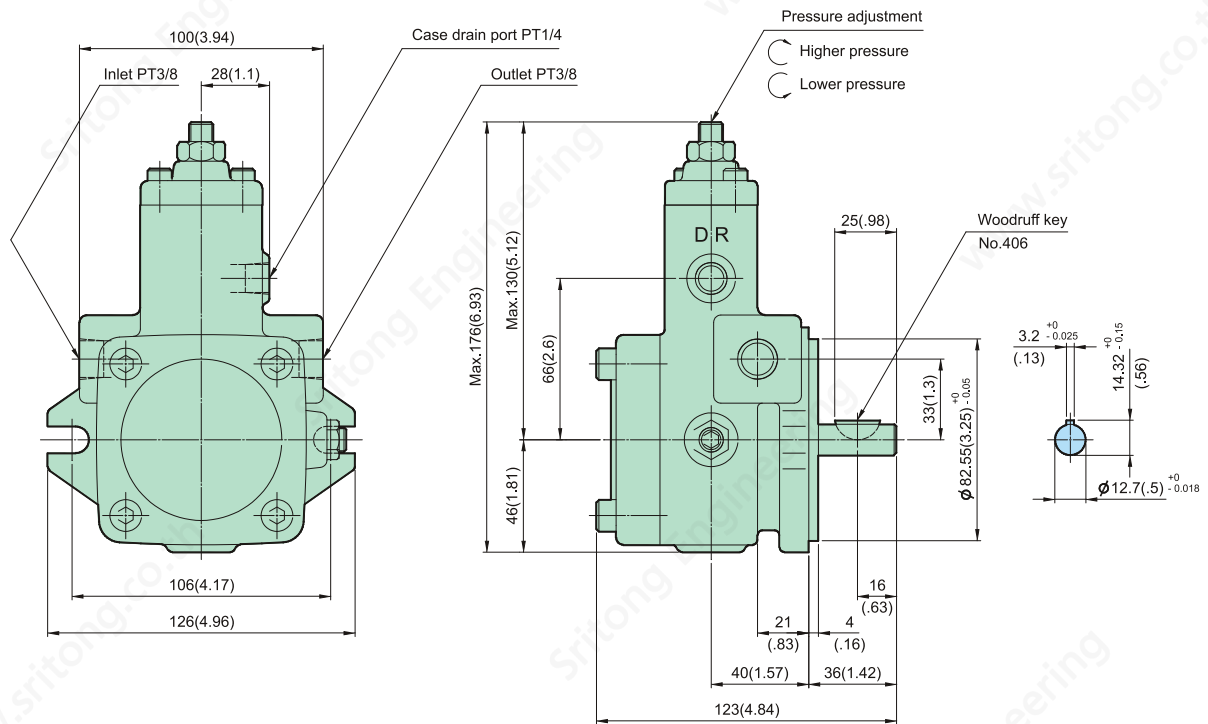
MODEL	Weight kg(ib)
PVF-12-**-11	5(11.01)
PVF-20-**-11	6(13.22)
PVF-30-**-11	9(19.82)
PVF-40-**-11	9(19.82)
PVDF-3**-3**-11	17(37.44)
PVDF-4**-4**-11	17(37.44)

DIMENSIONS

MILLIMETERS(INCHES)

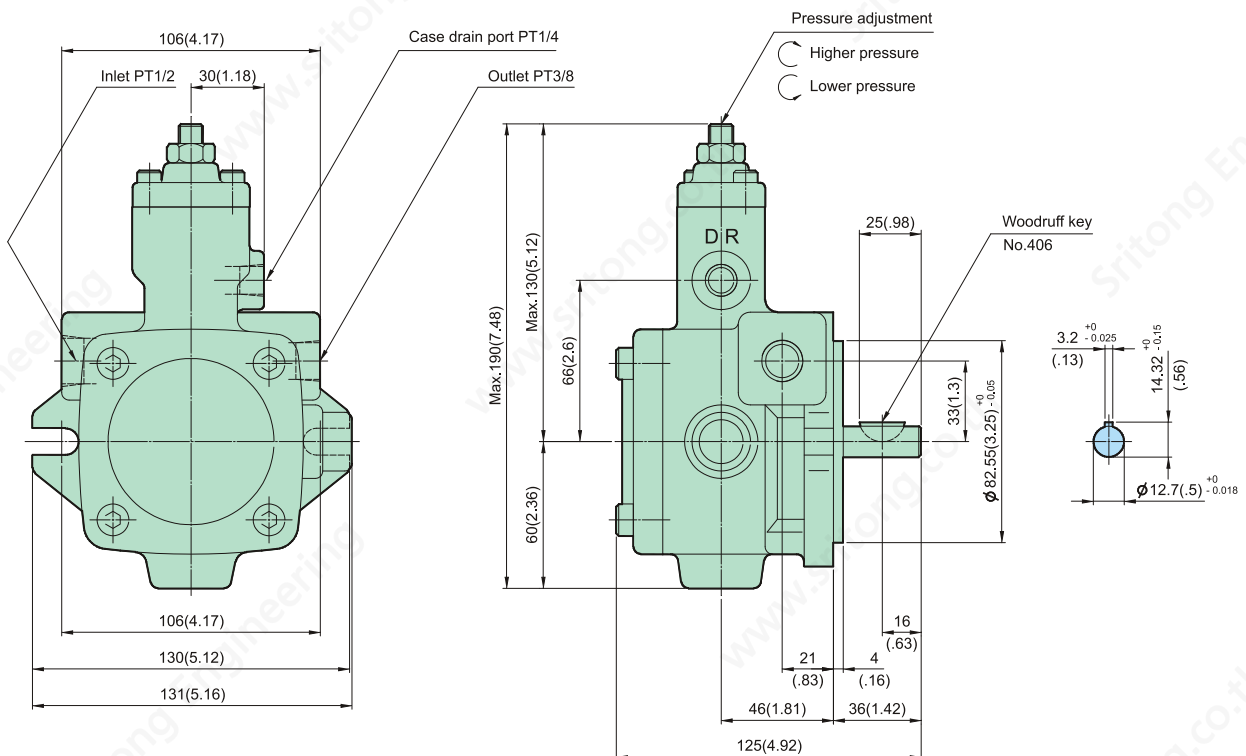
B

PVF-12-**-11



Note: Above type, without flow adjustment equipment.

PVF-20-**-11



Note: Above type, without flow adjustment equipment.

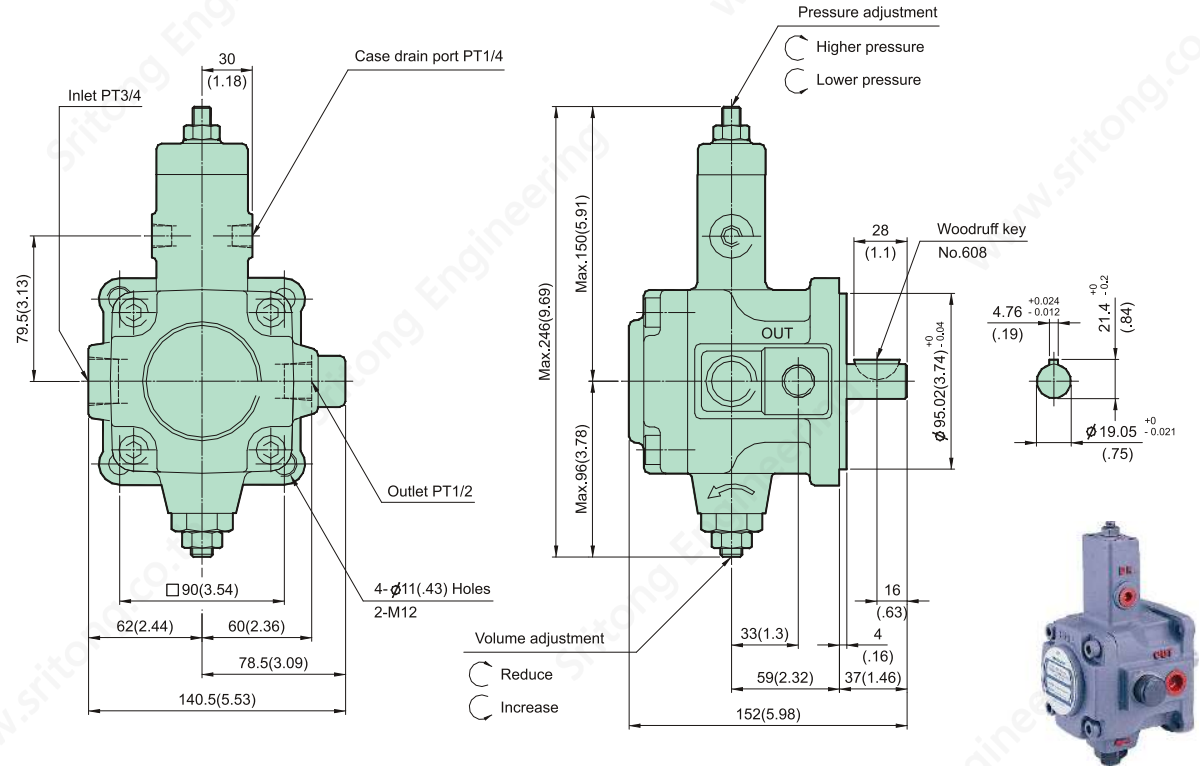


DIMENSIONS

MILLIMETERS(INCHES)

B

PVF-30(40)-** *-11



PVDF-***-***-11

