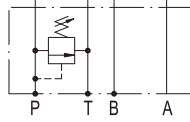
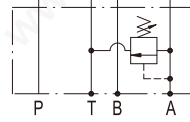


閥類型符號 SYMBOL

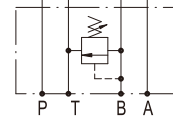
MRV - ※



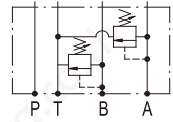
MRV-02.03P



MRV-02.03A



MRV-02.03B



MRV-02.03W

規格說明

SPECIFICATION :

型式 MODEL	最高使用壓力 MAX. OPERATING PRESSURE kgf/cm ²	壓力調整範圍 PRESSURE ADJ. RANGE kgf/cm ²	最大流量 MAX. FLOW l/min	重量 WEIGHT kg
MRV-02-※	250	1 : 7-70	35	1.6
MRV-03-※		2 : 7-140	70	3.5
MRV-04-※		3 : 7-210	190	7
MRV-06-※			300	12

型號說明

HOW TO ORDER :

MRV - 02 - P - 3 - A - L

旋轉型式 KNOB TYPE

無標示為K : 把手旋鈕螺桿調整 (標準型式)

NO MARK FOR K : HAFT TURNING KNOB BOLT ROD ADJUST (STANDARD TYPE.)

L : 內六角螺桿調整 INNER HEXANGULAR BOLT ROD ADJUST.

調整把手方向 DIRECTION OF KNOB

A : A口側 A PORT SIDE

B : B口側標準型 B PORT SIDE STANDARD TYPE

W : A, B口兩側 A PORT SIDE AND B PORT SIDE

※ 04, 06為固定方向

壓力調整範圍 PRESSURE ADJUSTING RANGE

1 : 7-70 kgf/cm²

2 : 7-140 kgf/cm²

3 : 7-210 kgf/cm²

口徑編號 SERIES NUMBER

P : P PORT

A : A PORT

B : B PORT

閥規格 VALVE SIZE

02 : 1 / 4"

03 : 3 / 8"

04 : 1 / 2"

06 : 3 / 4"

系列編號 SERIES NUMBER

測試條件

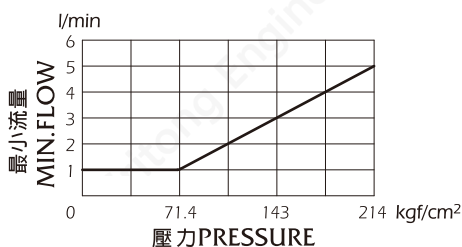
PERFORMANCE CURVES:

測試油黏度 TEST FLUID VISCOSITY : 35 cSt

測試油溫度 TEST TEMPERATURE : 50°C

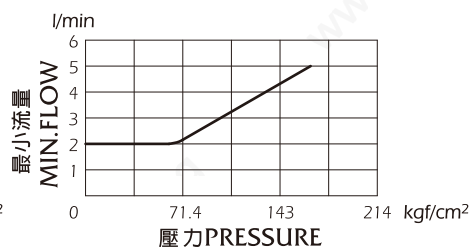
● MRV-02

最小流量 MIN.FLOW :



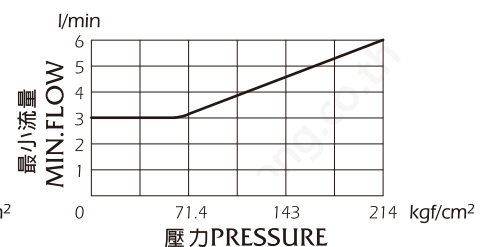
● MRV-03

最小流量 MIN.FLOW :



● MRV-04

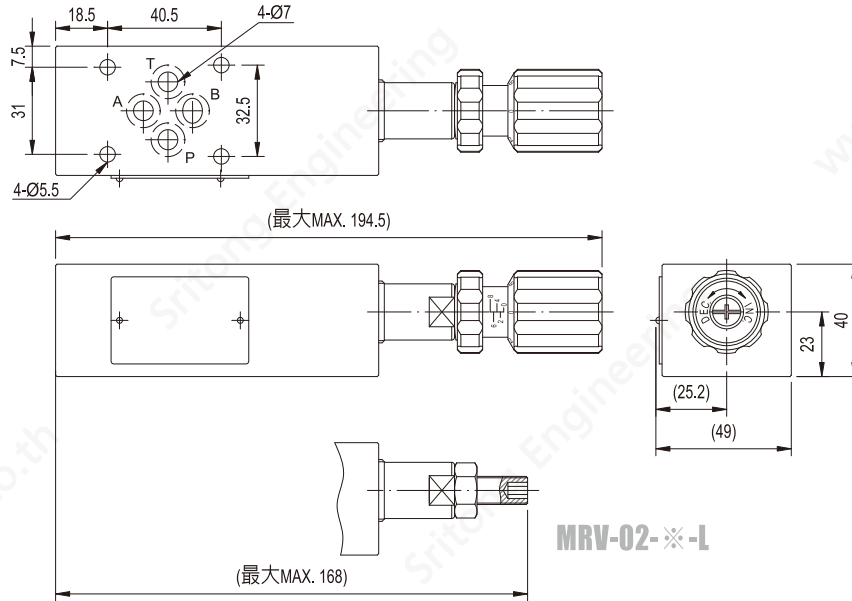
最小流量 MIN.FLOW :



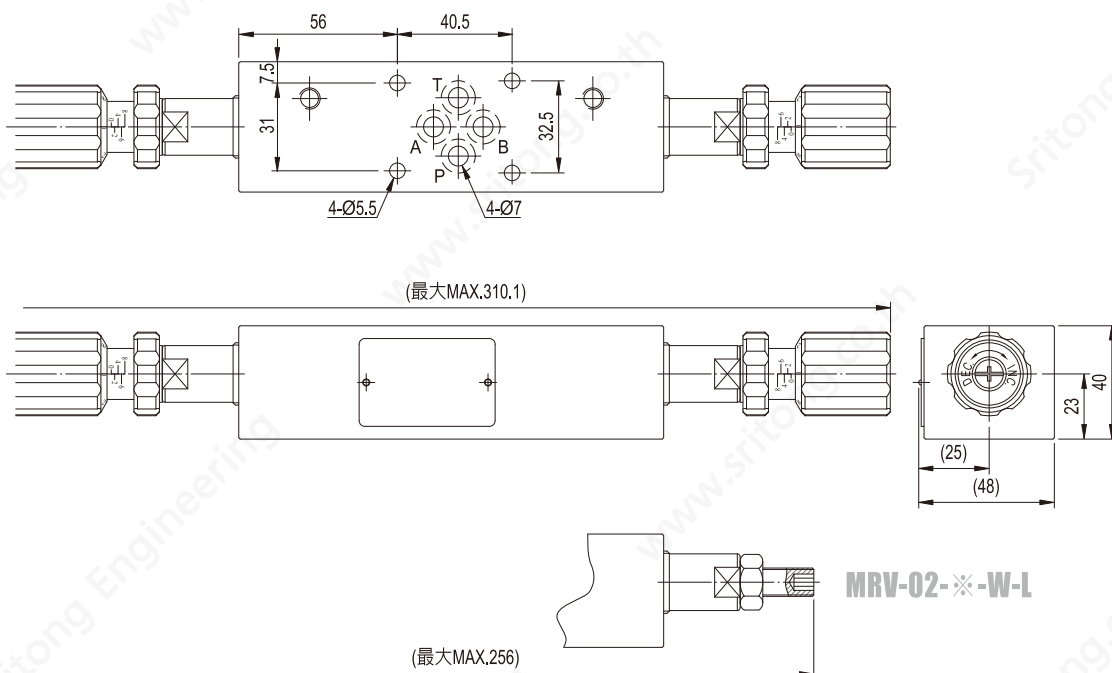
單位UNIT : mm

安裝尺寸 INSTALLATION DIMENSIONS

MRV-02



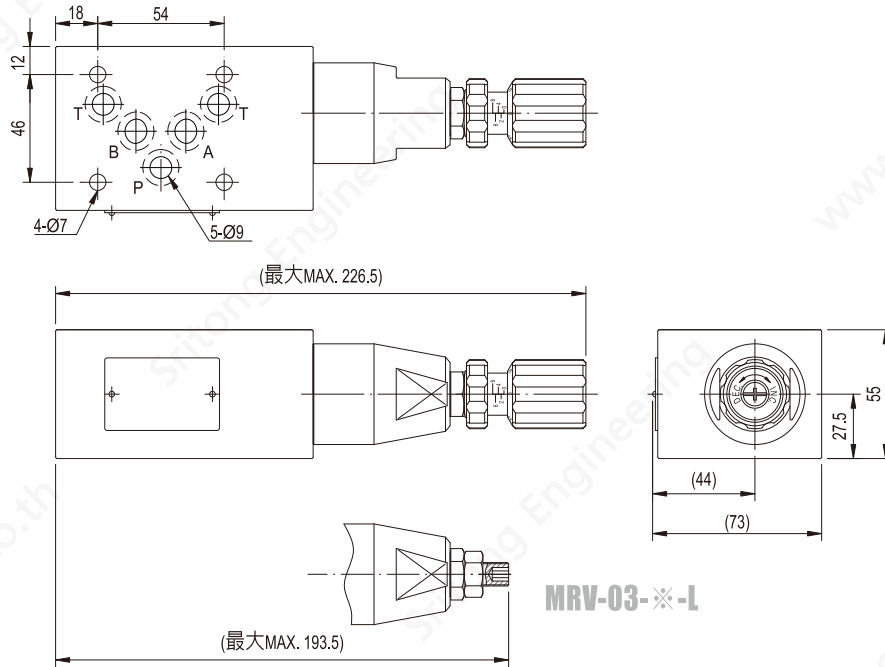
MRV-02-W



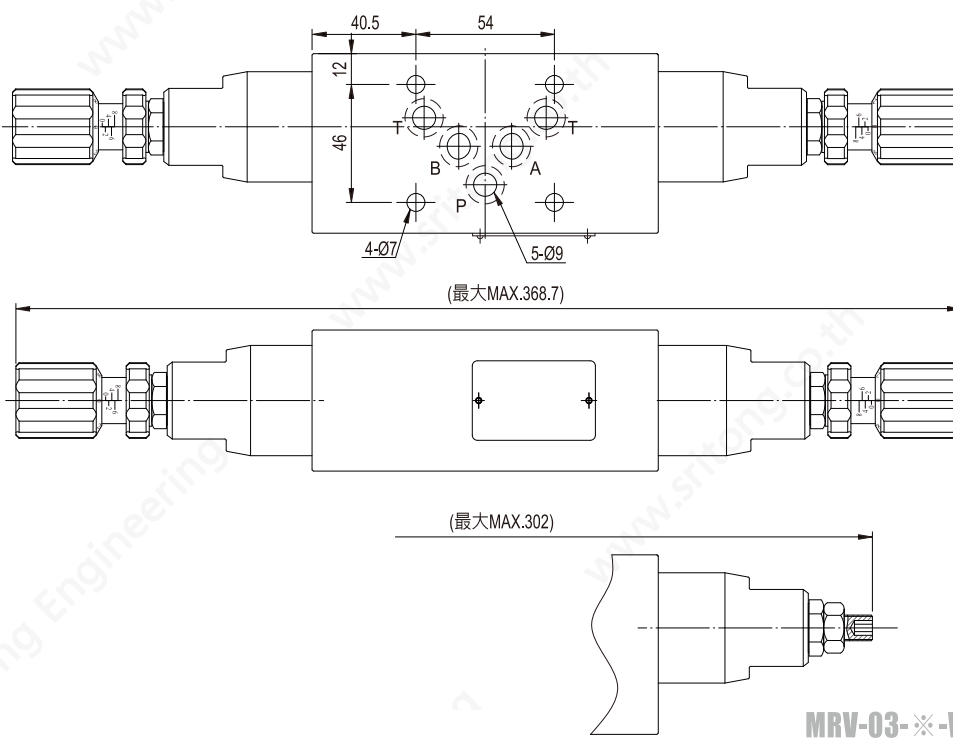
單位UNIT : mm

安裝尺寸 INSTALLATION DIMENSIONS

MRV-03



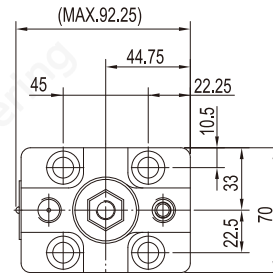
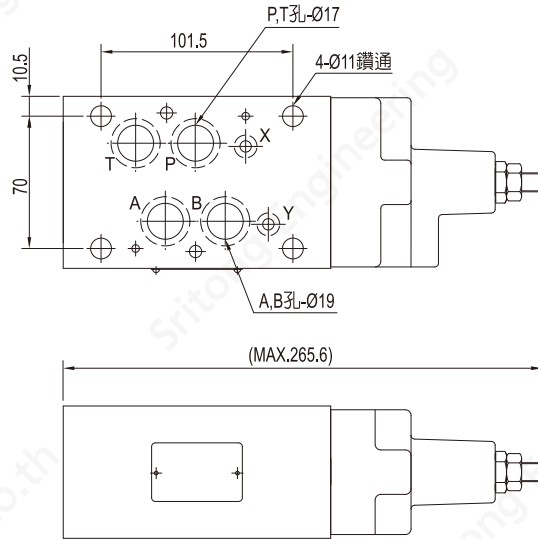
MRV-03-W



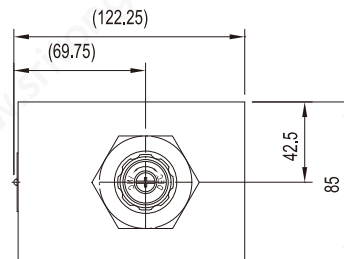
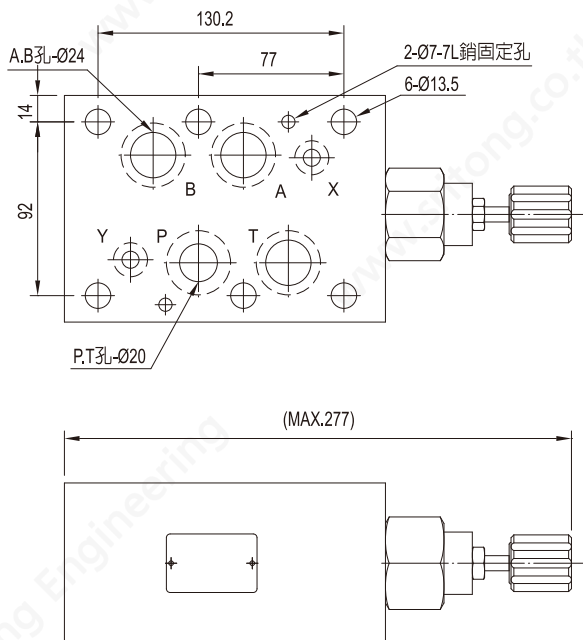
單位UNIT : mm

安裝尺寸 INSTALLATION DIMENSIONS

MRV-04



MRV-06



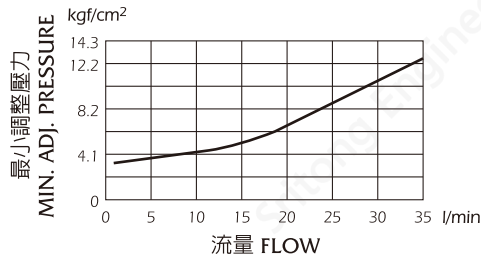
壓降特性 PRESSURE DROP

下列壓降特性是在油液黏度 35 cSt (mm/s) 和比重0.850條件下測得

Pressure drop curves based on viscosity of 35 cSt (160 SSU) and specific gravity of 0.850

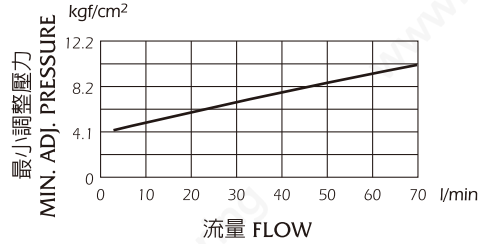
● MRV-02

最小調整壓力 MIN.ADJ PRESSURE

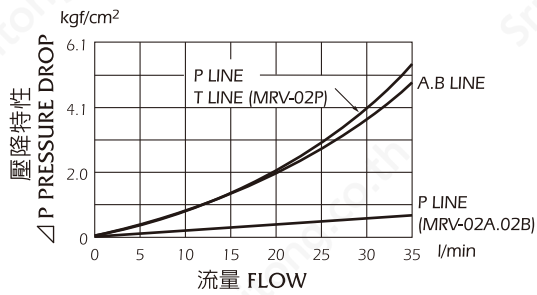


● MRV-03

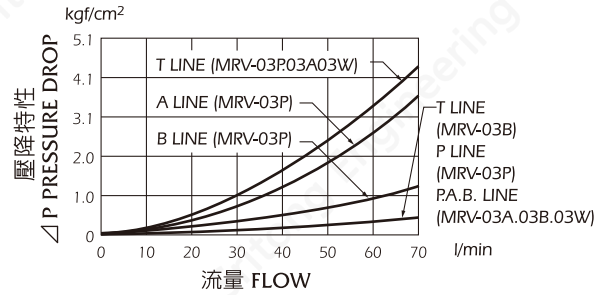
最小調整壓力 MIN.ADJ PRESSURE



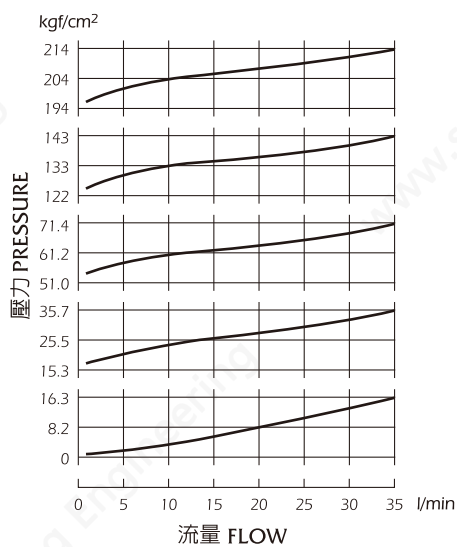
壓降特性 PRESSURE DROP



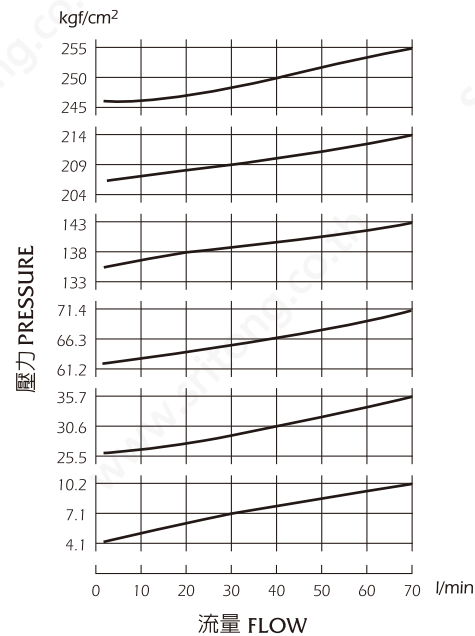
壓降特性 PRESSURE DROP



流量—壓力特性 NOMINAL OVERRIDE



流量—壓力特性 NOMINAL OVERRIDE



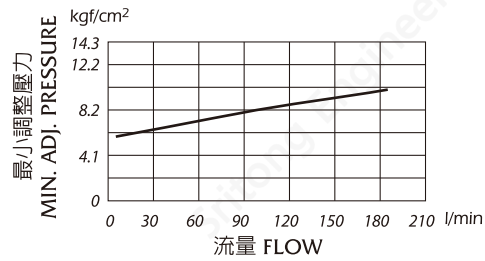
壓降特性 PRESSURE DROP

下列壓降特性是在油液黏度 35 cSt (mm/s) 和比重0.850條件下測得

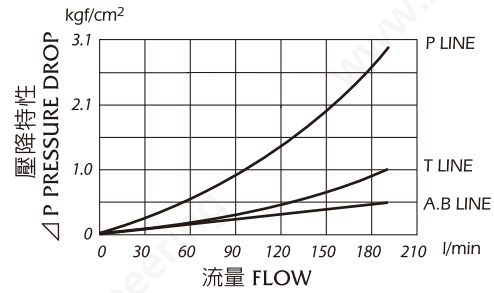
Pressure drop curves based on viscosity of 35 cSt (160 SSU)and specific gravity of 0.850

● MRV-04

最小調整壓力 MIN.ADJ PRESSURE



壓力降特性 PRESSURE DROP



流量—壓力特性 NOMINAL OVERRIDE

