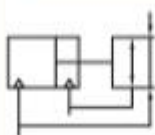


Symbol / Features



1. Parallel type, suitable for internal and external gripping.
2. Each bore size has two stroke variations, accommodates a wide range of workpiece diameters.
3. Built-in Magnet.



Specifications

Bore OD	mm	50	64	80	100	125	160
Bore Size	mm	32	40	56	70	90	125
Open and Close Stroke	mm	8, 10	12, 15	16, 20	20, 24	26, 31	32, 39
Action		Double Acting / Single Acting					
Fluid		Air					
Operating Pressure Range	MPa (kgf/cm ²)	0,3 - 0,7 (3,0 - 7,0)					
Operating Temperature Range	°C	-5 - 60 (No Freezing)					
Lubrication ^①		Not Required					
Cushion		No					
Repeatability	mm	± 0,01					
Max Operating Frequency	c.p.m	60	50		40		30
Port	Side Ported	M5X0,8			Rc1/8		
	Axial Ported	OR3X1,0 (O-ring)			OR5X1,5 (O-ring)		
Mass ^②	kg	0,18	0,40	0,75	1,30	2,25	4,25

Note: ① Use only Turbine Oil ISO VG32 for lubricant, if required. ② Value for the double acting type without center pusher.

Order Code

MHT	50	X	10	D	S	P
Series ^①	Bore OD mm	X	Stroke	Port ^②	Action	Center Pusher
	50	Ø50	Refer to Stroke Table	Blank Side Ported D Axial Ported	Blank Double Acting S Single Acting (Spring Open) T Single Acting (Spring Close)	Blank without P with
	64	Ø64				
	80	Ø80				
	100	Ø100				
	125	Ø125				
	160	Ø160				

Note: ① Auto switch needs to be ordered separately, please refer to the Auto Switch Selection Table.

② Refer to the port type.

Order Example

Bore OD = 80mm; Stroke = 16mm; Side Ported; Double Acting; without Center Pusher, MHT Series; Order Code: MHT80X16

Bore OD = 125mm; Stroke = 31mm; Axial Ported; Single Acting (Spring Open); with Center Pusher; with Auto Switch (Refer to 4.03 TD series, Model: TDX, length 2 meters), MHT Series;

Order Code: MHT125X31D-S-P

Auto Switch Order Code: TDX-2000 (Normally, each cylinder will installed 2 Auto switches).

• Auto Switch

Bore Size (mm)	2-wire		3-wire
	Contact	Non Contact	Non Contact
50, 64	—	TDX	TDS
80, 100		TDTX	TDLFS
125, 160		TDLFX	TDLMN
		TDLMX	TDLMP