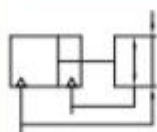


Symbol / Features



1. Parallel Gripper, suitable for internal and external workpiece clamping.
2. High strength with large output torque.
3. Free mount design for easy installation requirement.
4. Built-in Magnet.
5. With push-in fitting design, easy to access the port in limited space.



Specifications

| Bore | mm | 16 | 20 | 25 | 32 | 40 | 50 | 63 | |
|-----------------------------|-----------------------------|--------------------------|--------|------|------|-------|-------------------------|------|--|
| Opening / Closing Stroke | mm | 5 | 8 | 12 | 16 | 20 | 26 | 32 | |
| Action | | Double Acting | | | | | | | |
| Fluid | | Air | | | | | | | |
| Operating Pressure Range | MPa (kgf/cm ²) | 0.25 ~ 0.8 (2.6 ~ 8.2) | | | | | | | |
| Operating Temperature Range | °C | -5 ~ 60 (No Freezing) | | | | | | | |
| Lubrication ^① | | Not Required | | | | | | | |
| Cushion | | Without | | | | | | | |
| Repeatability | mm | ± 0.01 | | | | | | | |
| Maximum Operating Frequency | c.p.m | 50 | | | | | 40 | | |
| Mass | kg | 0.07 | 0.15 | 0.25 | 0.50 | 0.80 | 1.30 | 2.60 | |
| Port | Side | M3X0,5 | M5X0,8 | | | Rc1/8 | | | |
| | Bottom | OR3X1.0 (O-Ring Seal) | | | | | OR5X1.5 (O-Ring Seal) | | |

Note: ① Use only Class 1 Turbine Oil ISO VG32 for lubricant, if required.

Order Code

| MHS | 32 | D |
|---|-----------|----------------------------|
| Series ^① | Bore mm | Port Location ^② |
|  | 16 Ø16 | Blank Side |
| | 20 Ø20 | D Bottom |
| | 25 Ø25 | |
| | 32 Ø32 | |
| | 40 Ø40 | |
| | 50 Ø50 | |
| | 63 Ø63 | |

Note: ① Auto switch needs to be ordered separately, please refer to the catalog.

② Refer to the Port Location.

Order Example

Bore=40mm, Side Ported, Order Code: MHS40

Bore=63mm; Need Auto Switch (Refer to 4.03 TD series, Model: TDS, Length = 2M); Bottom Ported.

Order Code for Cylinder: MHS63

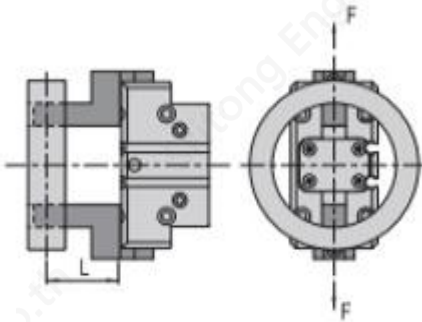
Order Code for Auto Switch: TDS-2000 (Normally, each cylinder will install 2 auto switches).

• Auto Switch

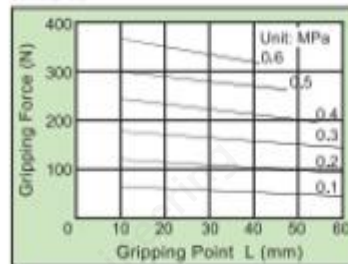
| Bore (mm) | 2 Wires | | 3 Wires |
|-----------|---------|-------------|-------------|
| | Contact | Solid State | Solid State |
| 16, 20 | TD | TDX | TDS |
| 25, 32 | | TDTX | TDLFS |
| 40, 50 | | TDLFX | TDLMN |
| 63 | | TDLMX | TDLMP |
| | | | |

Load Characteristic

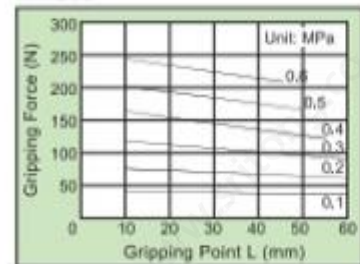
• Internal Gripping Force



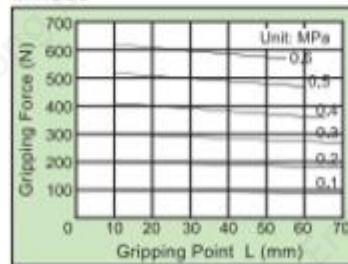
MHS40



MHS50



MHS63



• Moment

| Bore (mm) | Allowable Vertical Load (N) | Allowable Bending Moment (N·m) | | |
|-----------|-----------------------------|--------------------------------|------------|-------------|
| | | Pitch Moment | Yaw Moment | Roll Moment |
| 16 | 200 | 10 | 4 | 8 |
| 20 | 400 | 20 | 8 | 16 |
| 25 | 800 | 48 | 32 | 32 |
| 32 | 1000 | 60 | 40 | 45 |
| 40 | 1500 | 100 | 55 | 65 |
| 50 | 2500 | 120 | 70 | 95 |
| 63 | 4000 | 160 | 85 | 125 |

| Force Diagram | Mp | My | Mr |
|---------------|----|----|----|
| | | | |