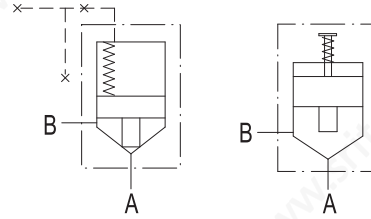




閥類型符號 SYMBOL
LCV-※



規格說明 SPECIFICATION :

型式 MODLE	最大流量 MAX. FLOW l/min	最高使用壓力 MAX. OPERATING PRESSURE kgf/cm ²	開啓壓力 CRACKING PRESSURE kgf/cm ²	重量 WEIGHT kg
LCV-16-※	130	315	05 : 0.35 20 : 2.0 50 : 4.5	0.18
LCV-20-※	230			0.32
LCV-25-※	350			0.43
LCV-32-※	500			0.87
LCV-40-※	850			1.59
LCV-50-※	1400			2.74
LCV-63-※	2100			5.8
LCV-80-※	3400			11.1

型號說明 HOW TO ORDER :

LCV - 32 - E - 05

開啓壓力 CRACKING PRESSURE
05 : 0.35 kgf/cm² 20 : 2.0 kgf/cm²
50 : 4.5 kgf/cm²

閥型式 VALVE TYPE
E : 方向—流量控制閥 DIRECTIONAL & FLOW CONTROL LOGIC VALVES
D : 附緩衝型閥 SHOCK LESS LOGIC VALVES
B : 溢流閥 RELIEF LOGIC VALVES

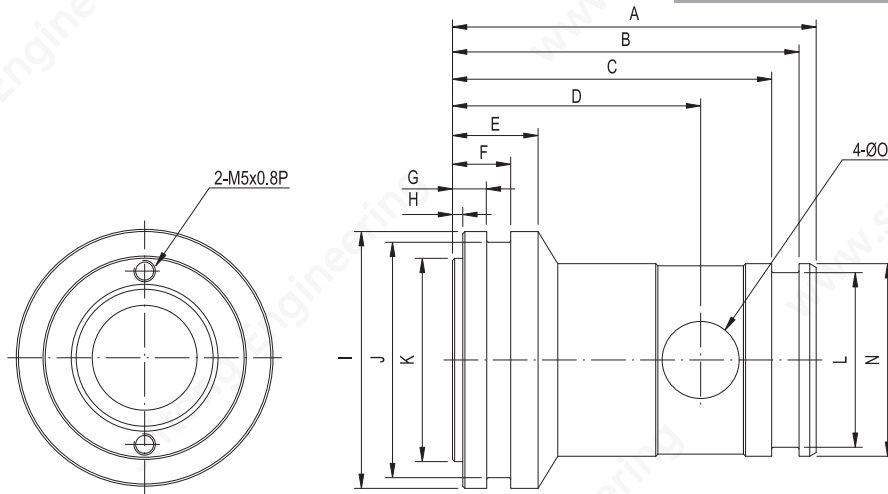
閥規格 VALVE SIZE

系列編號 SERIES NUMBER

單位UNIT : mm

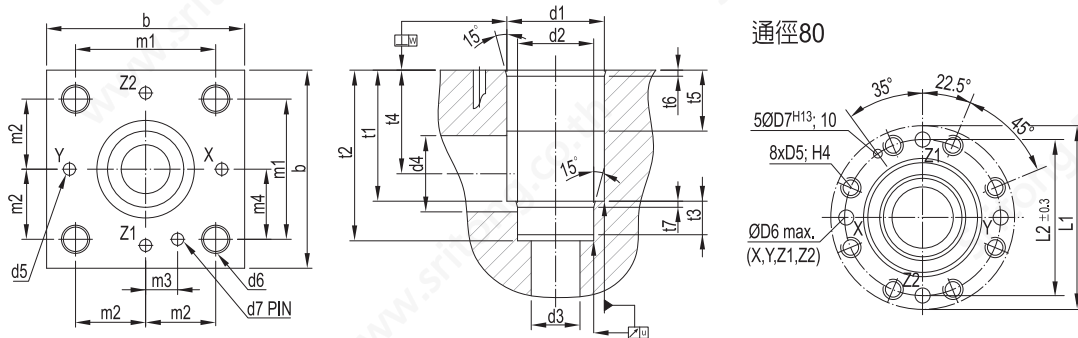
安裝尺寸 INSTALLATION DIMENSIONS

LCV-※



CODE SIZE	A	B	C	D	E	F	G	H	I	J	K	L	N	O
16	56	52	46.5	37	16	10.5	7	2.4	32	29.2	22.2	22.2	25	10
20	64	61	53.7	40	13.7	11.2	5.6	2.4	40	35	26	25	30	11
25	72	69	62.6	43	16	13.5	8.8	1.8	45	40.8	37	29.8	34	14
32	85	81	74.6	58	20	13.6	8	2.4	60	55	47.5	40.8	45	18
40	105	97	90.6	66.5	24	15.6	10	2.4	75	70	62	50.8	55	23.5
50	122	114	107.6	83	20	14.6	9	2.4	90	85	76.8	63.8	68	28
63	155	145.5	134	115	27	21	12	4.6	120	110	94	80	90	25
80	205	195	183.4	152	30	21	12	4.6	145	135	120	100	110	34

底板尺寸 SUB-PLATE DIMENSIONS



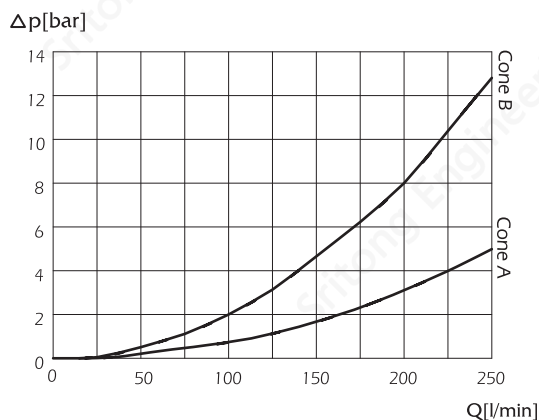
CODE SIZE	b	d1	d2	d3	d4	d5	d6	d7	m1	m2	m3	m4	t1	t2	t3	t4	t5	t6	t7	u	w
16	65	32	25	16	25	5	M8	4	46	23	10.5	25	43	56	11	34	20	2	2	0.03	0.05
20	75	40	30	23.5	25.5	6	M8	6	52	26	11.2	29	43	64	14	37	25	2	2	0.03	0.05
25	85	45	34	25	32	6	M12	6	58	29	16	33	58	72	12	44	30	2.5	2.5	0.03	0.05
32	102	60	45	32	40	8	M16	6	70	35	17	41	70	85	13	52	30	2.5	2.5	0.03	0.1
40	125	75	55	40	50	10	M20	6	85	42.5	23	50	87	105	15	64	30	3	3	0.05	0.1
50	140	90	68	50	63	10	M20	8	100	50	30	58	100	122	17	72	35	4	3	0.05	0.1
63	180	120	90	63	80	12	M30	8	125	62.5	38	75	130	155	20	95	40	4	4	0.05	0.2
80	250	145	110	80	100	16	M24	10	150	75	45	100	150	200	25	130	40	5	5	0.05	0.2

測試條件 PERFORMANCE CURVES

流量—壓力特性 NOMINAL OVERRIDE

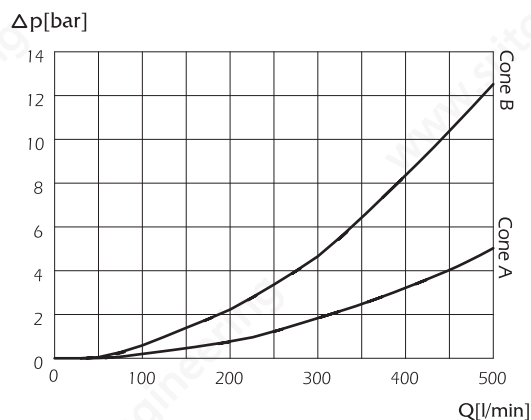
● LCV-16

Check conditions : without spring,
oil temperature 50°C / 122°F, viscosity 35 cSt



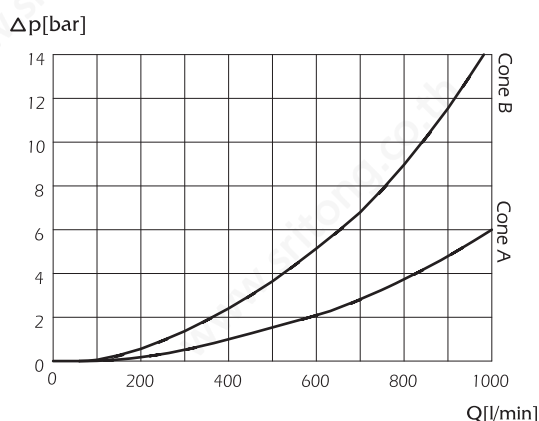
● LCV-25

Check conditions : without spring,
oil temperature 50°C / 122°F, viscosity 35 cSt



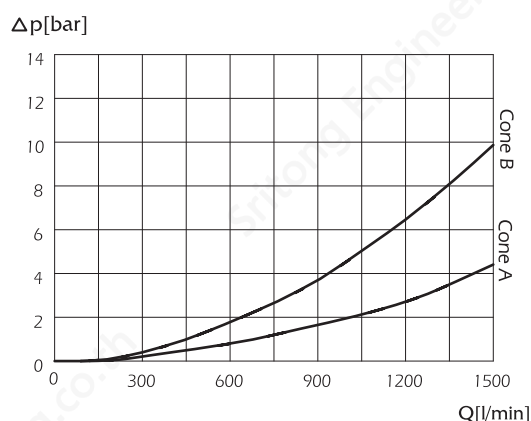
● LCV-32

Check conditions : without spring,
oil temperature 50°C / 122°F, viscosity 35 cSt



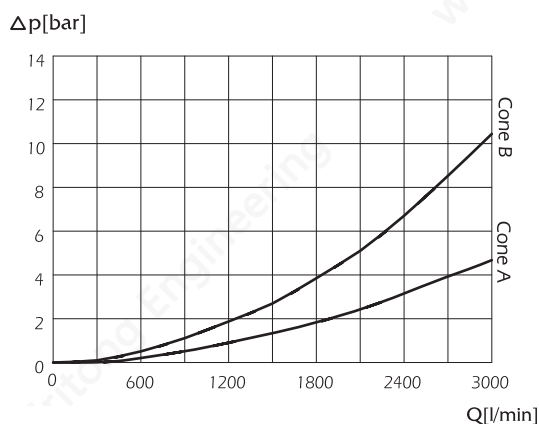
● LCV-40

Check conditions : without spring,
oil temperature 50°C / 122°F, viscosity 35 cSt



● LCV-50

Check conditions : without spring,
oil temperature 50°C / 122°F, viscosity 35 cSt



● LCV-63

Check conditions : without spring,
oil temperature 50°C / 122°F, viscosity 35 cSt

