



DIMENSIONS

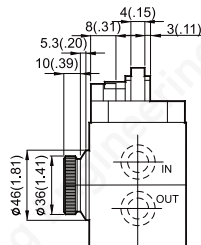
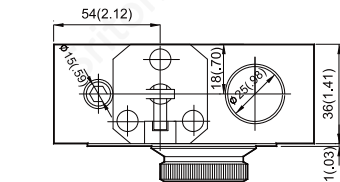
MILLIMETERS(INCHES)

FPR-MGK-*-03 TWO-STAGE

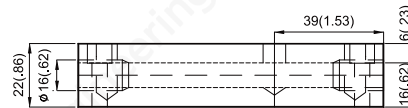
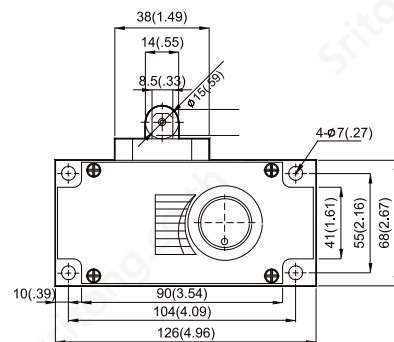
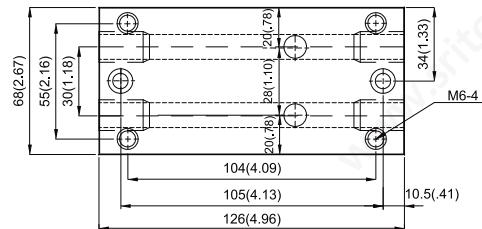
Flow Control with Check Valves (Axial Cam Operated, Push-Down)
Pressure Compensated (Sub-plate Type)



SYMBOL



Sub-plate Dimensions



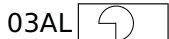
Valve Specifications & Attachment

Model	FPR-MGK-*-03
Free Flow	30 lpm (7.9 gpm)
Max. Pressure	70 bar (1000 psi)
Weight kg.(lbs.)	2.18 (4.79)
CODE:20	M6 X45LgX4pcs
Surface O-Ring	P16X2pcs

Model	Within Flow Rate Adjusting (lpm)	Connection Bore
FPR-MGK-2-03	0.1 - 2	PT 3/8
FPR-MGK-4-03	0.1 - 4	
FPR-MGK-8-03	0.1 - 8	

FPR-MGK-*-03AR/AL

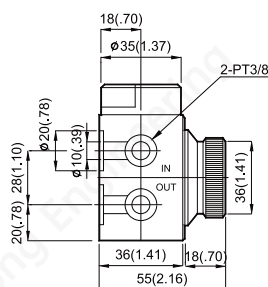
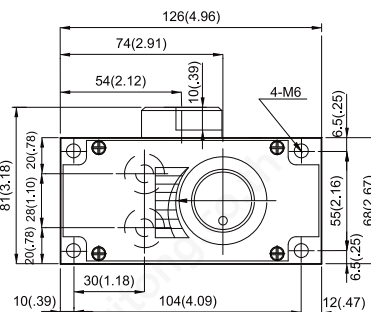
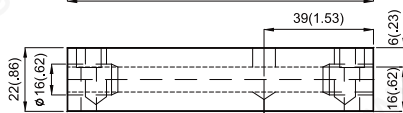
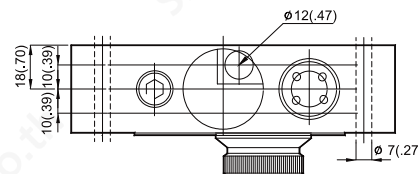
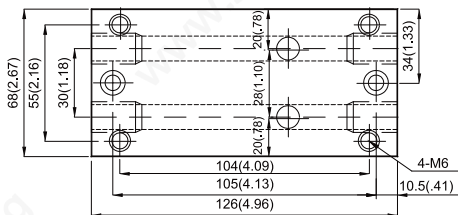
Flow Control with Check Valves (Rotary Operated)
Pressure Compensated (Sub-plate Type)



Sub-plate Dimensions



SYMBOL



Valve Specifications & Attachment

Model	FPR-MGK-*-03AR/AL
Free Flow	30 lpm (7.9 gpm)
Max. Pressure	70 bar (1000 psi)
Weight kg.(lbs.)	2.24 (4.92)
CODE:20	M6 X45LgX4pcs
Surface O-Ring	P16X2pcs

Model	Within Flow Rate Adjusting (lpm)	Connection Bore
FPR-MGK-2-03AR/AL	0.1 - 2	PT 3/8
FPR-MGK-4-03AR/AL	0.1 - 4	
FPR-MGK-8-03AR/AL	0.1 - 8	