

How to Order?

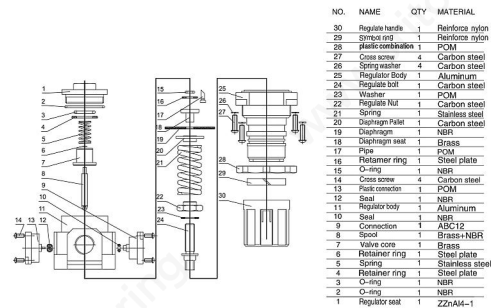
Series No.	Type Code	Body Size	Combination	QTY	Port Size	Drain Type	Pressure Gauge Code	Bracket Code	Scale Unit	Filter Precision	Thread Type
EI: Square gauge series	C: Filter+regulator+lubricator W: Filter+regulator F: Filter R: Regulator L: Lubricator	20: 2000 body 30: 4000 body 40: 4000 body 50: 5000 body	10: Two units (Regulator-Lubricator) 00: Others		2000 01: 1/8" * 02: 1/4" * 3000 02: 1/4" * 03: 3/8" * 4000 03: 3/8" * 04: 1/2" * 5000 06: 3/4" * 10: 1" *	Blank: Manual drain type C: Semi-auto drain D: Auto Drain type	Blank: With pressure gauge N: No pressure gauge	Blank: With bracket J: No bracket	1: Mpa 2: Bar *3: Psi (*Need special made)	Blank: 25 μm 5M: 5 μm	Blank: G P: PT T: NPT

Order Example:

EI series regulator, 2000 body size, 1/8 port size, with pressure gauge, Mpa pressure unit, G thread, ERP code is: EIR2000-01 1

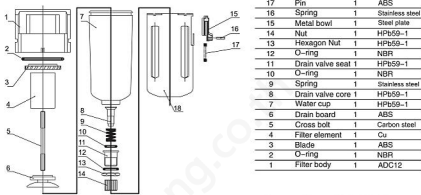
Air Preparation Unit Kits

EIR3000



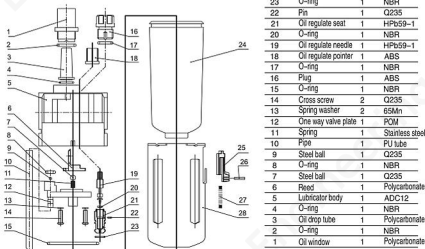
NO.	NAME	QTY	MATERIAL
30	Regulate handle	1	Reinforce nylon
29	Brass ring	1	Reinforce nylon
28	plastic combination	1	PCM
27	Cross screw	4	Carbon steel
26	Spring washer	4	Carbon steel
25	Regulator Body	1	Aluminum
24	Regulate nut	1	Carbon steel
23	Washer	1	PCM
22	Regulate Nut	1	Carbon steel
21	Spring	1	Stainless steel
20	Diaphragm Piston	1	Carbon steel
19	Diaphragm	1	NBR
18	Diaphragm seal	1	Brass
17	Pipe	1	PCM
16	Retainer ring	1	Steel plate
15	O-ring	1	NBR
14	Cross screw	4	Carbon steel
13	Plastic connection	1	PCM
12	Seal	1	NBR
11	Regulator body	1	Aluminum
10	Seal	1	NBR
9	Connection	1	ABS12
8	Valve core	1	Brass+NBR
7	Valve cone	1	Brass
6	Retainer ring	1	Steel plate
5	Spring	1	Stainless steel
4	Retainer ring	1	Steel plate
3	O-ring	1	NBR
2	O-ring	1	NBR
1	Regulator seat	1	ZZN44-1

EIF3000



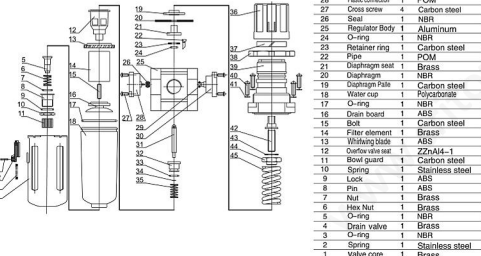
NO.	NAME	QTY	MATERIAL
18	Lock	1	ABS
17	Pin	1	ABS
16	Spring	1	Stainless steel
15	Metal bowl	1	Steel plate
14	Nut	1	HP659-1
13	Hexagon Nut	1	HP659-1
12	O-ring	1	NBR
11	Drain valve seat	1	HP659-1
10	O-ring	1	NBR
9	Spring	1	Stainless steel
8	Drain valve core	1	HP659-1
7	Water cup	1	HP659-1
6	Drain board	1	ABS
5	Cross bolt	1	Carbon steel
4	Filter element	1	Cu
3	O-ring	1	ABS
2	O-ring	1	NBR
1	Filter body	1	ADC12

EIL3000

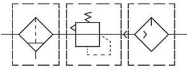


NO.	NAME	QTY	MATERIAL
28	Oil cup	1	Polycarbonate
27	Lock	1	ABS
26	Pin	1	ABS
25	Spring	1	Stainless steel
24	Metal bowl	1	Steel plate
23	O-ring	1	NBR
22	Pin	1	Q235
21	Oil regulate seat	1	HP659-1
20	O-ring	1	NBR
19	Oil regulate needle	1	HP659-1
18	Oil regulate pointer	1	ABS
17	Steel ball	1	Q235
16	Plug	1	ABS
15	O-ring	1	NBR
14	Cross screw	2	Q235
13	Spring washer	2	65Mn
12	One way valve plate	1	PCM
11	Spring	1	Stainless steel
10	Pipe	1	NBR
9	Steel ball	1	Q235
8	O-ring	1	NBR
7	Steel ball	1	Q235
6	Reed	1	Polycarbonate
5	Lubricator body	1	ADC12
4	O-ring	1	NBR
3	Oil drop tube	1	Polycarbonate
2	O-ring	1	NBR
1	Oil window	1	Polycarbonate

EIW3000



NO.	NAME	QTY	MATERIAL
45	Spring	1	Carbon steel
44	Regulate nut	1	Carbon steel
43	Washer	1	PCM
42	Regulate bolt	1	Carbon steel
41	Spring washer	4	Carbon steel
40	Cross screw	4	Carbon steel
39	Valve cover	1	Reinforce nylon
38	Nut	1	Reinforce nylon
37	Spring ring	1	Reinforce nylon
36	Regulate handle	1	Reinforce nylon
35	Spring	1	Stainless steel
34	Retainer	1	Steel plate
33	O-ring	1	NBR
32	Seal	1	NBR
31	Spool	1	PH659-1+NBR
30	Seal	1	ADC12
29	Plastic connection	1	PCM
28	Cross screw	4	Carbon steel
27	Regulator body	1	Carbon steel
26	Seal	1	NBR
25	Regulator body	1	Aluminum
24	O-ring	1	NBR
23	Retainer ring	1	Carbon steel
22	Diaphragm	1	NBR
21	Diaphragm seal	1	Brass
20	Diaphragm	1	NBR
19	Diaphragm Piston	1	Carbon steel
18	Water cup	1	Polycarbonate
17	O-ring	1	NBR
16	Drain board	1	ABS
15	Seal	1	Carbon steel
14	Filter element	1	Brass
13	Withring blade	1	ABS
12	Water valve seat	1	ZZN44-1
11	Bowl guard	1	Carbon steel
10	Spring	1	Stainless steel
9	Lock	1	ABS
8	Pin	1	ABS
7	Nut	1	Brass
6	Hex Nut	1	Brass
5	Drain valve	1	Brass
4	O-ring	1	NBR
3	O-ring	1	NBR
2	Spring	1	Stainless steel
1	Valve core	1	Brass



Specifications

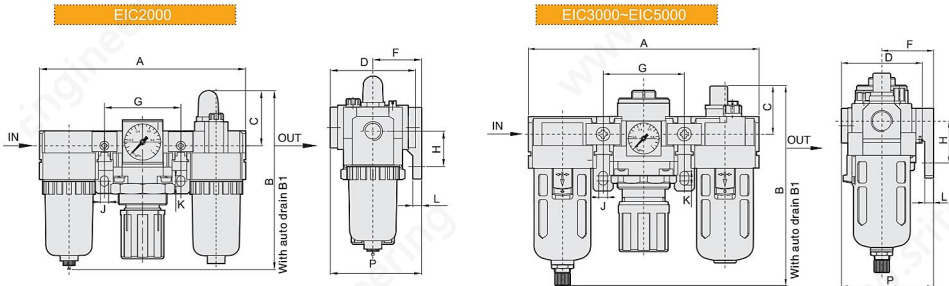
Model	EIC2000	EIC3000	EIC4000	EIC5000
Proof pressure(MPa)			1.5	
Max. working pressure(MPa)			1.0	
Working temperature(°C)			5-60	
Filter precision		25µm(5 µm is optional)		
Recommended oil		Turbine No.1 Oil ISOVG32		
Bowl material		Polycarbonate		
Bowl guard	None	Available		
Pressure adjusting range(MPa)		0.15~0.85		
Valve type		With overflow		

Model	Specifications				* Rated flow (L/min)	** Port size (G)
	Filter	Assembly	Regulator	Lubricator		
EIC2000-01	EIF2000	EIR2000	EIL2000	1000	1/8	
EIC2000-02				1100	1/4	
EIC3000-02	EIF3000	EIR3000	EIL3000	1950	1/4	
EIC3000-03				2105	3/8	
EIC4000-03				4950	3/8	
EIC4000-04	EIF4000	EIR4000	EIL4000	5200	1/2	
EIC5000-06	EIF5000	EIR5000	EIL5000	6200	3/4	
EIC5000-10				6500	1	

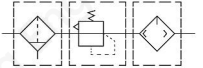
* The above information is based on 8.0 Bar supply pressure and 6.3 Bar set pressure

* NPT,PT port size is optional

Main Dimensions (mm)



Model	Port Size (G)	A	B	B1	C	D	F	G	H	J	K	L	P
EIC2000	1/8"-1/4"	140	122	160	38	54	30	50	24	5.5	8.5	5	57
EIC3000	1/4"-3/8"	184	156.5	170	38	64	41	65	35	7	11	7	71
EIC4000	3/8"-1/2"	238	191.5	194.5	41	80	50	84	40	9	13	7	88
EIC5000	3/4"-1"	300	271.5	274.5	48	90	69.8	105	50	12	16	10.5	115



Specifications

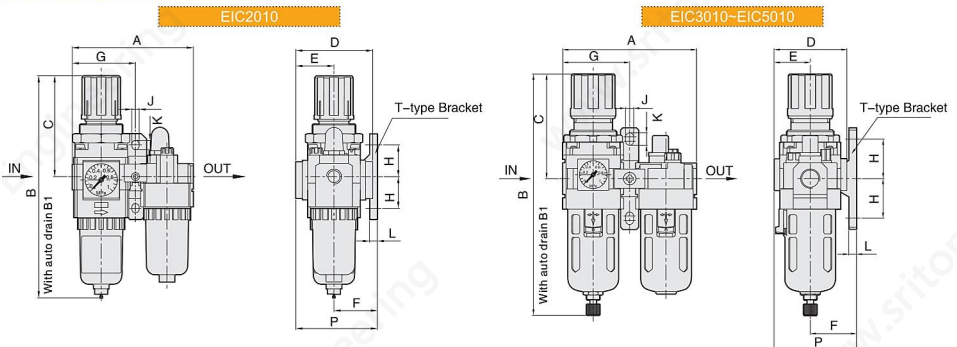
Model	EIC2010	EIC3010	EIC4010	EIC5010
Proof pressure(MPa)			1.5	
Max. working pressure(MPa)			1.0	
Working temperature(°C)			5-60	
Filter precision			25 μm(5 μm is optional)	
Recommended oil			Turbine No.1 Oil ISOVG32	
Bowl material			Polycarbonate	
Bowl guard	None		Available	
Pressure adjusting range(MPa)			0.15-0.85	
Valve type			With overflow	

Model	Specifications			
	Assembly		* Rated flow (L/min)	** Port size (G)
	Filter with pressure reducer	Lubricator		
EIC2010-01	EIW2000	EIL2000	945	1/8
EIC2010-02			960	1/4
EIC3010-02			1874	1/4
EIC3010-03	EIW3000	EIL3000	1956	3/8
EIC4010-03			4923	3/8
EIC4010-04	EIW4000	EIL4000	5120	1/2
EIC5010-06			6000	3/4
EIC5010-10	EIW5000	EIL5000	6200	1

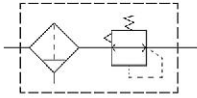
* The above information is based on 8.0 Bar supply pressure and 6.3 Bar set pressure

* NPT,PT port size is optional

Main Dimensions (mm)



Model	Port Size (G)	A	B	B1	C	D	E	F	G	H	J	K	L	P
EIC2010	1/8"-1/4"	90	167.5	205.5	80.2	54	27	30	45	24	5.5	8.5	5	57
EIC3010	1/4"-3/8"	118	211	224.5	92.5	64	32	41	59.5	35	7	11	7	73
EIC4010	3/8"-1/2"	154	262	265	112	80	40	50	77	40	9	13	7	90
EIC5010	3/4"-1"	195	338	341	116	94	47	69.8	97.5	50	12	16	10.5	117



Specifications

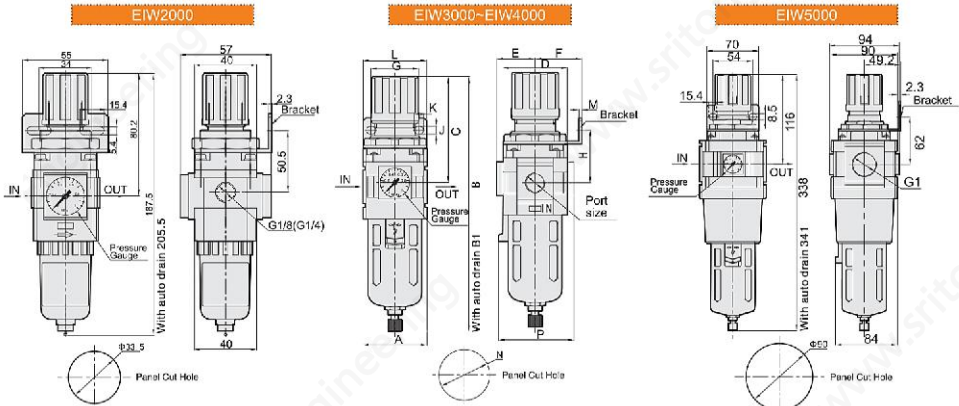
Model	EIW2000	EIW3000	EIW4000	EIW5000
Proof pressure(MPa)			1.5	
Max. working pressure(MPa)			1.0	
Working temperature(°C)			5-60	
Filter precision		25um(5 μm is optional)		
Bowl material		Polycarbonate		
Bowl guard	None		Available	
Pressure adjusting range(MPa)		0.15-0.85		
Valve type		With overflow		

Model	Specifications		Drain function	Auto drain model
	Rated flow (L/min)	Port size(G)		
EIW2000-01	1078	1/8	Manual drain	EIW2000-01D
EIW2000-02	1165	1/4		EIW2000-02D
EIW3000-02	1998	1/4	Zero pressure drain/Manual drain	EIW3000-02D
EIW3000-03	2177	3/8		EIW3000-03D
EIW4000-03	5108	3/8		EIW4000-03D
EIW4000-04	5211	1/2		EIW4000-04D
EIW5000-06	6200	3/4		EIW5000-06D
EIW5000-10	6400	1		EIW5000-10D

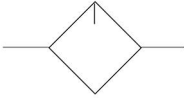
* The above information is based on 8.0 Bar supply pressure and 6.3 Bar set pressure

* NPT,PT port size is optional

Main Dimensions (mm)



Model	Port Size (G)	A	B	BI	C	D	E	F	G	H	J	K	L	M	N	P
EIW3000	1/4"-3/8"	54	211	224.5	92.5	54	32	39	40	45	6.5	8	53	2.3	42.5	63
EIW4000	3/8"-1/2"	70	262	265	112	70	42	49.2	54	53.5	8.5	10.5	70	2.3	52.5	74



Specifications

Model	EIL2000	EIL3000	EIL4000	EIL5000
Proof pressure(MPa)	1.5			
Max. working pressure(MPa)	1.0			
Working temperature(°C)	5-60			
Recommended oil	Turbine No.1 Oil ISOVG32			
Bowl material	Polycarbonate			
Bowl guard	None	Available		
Entrance pressure(MPa)	0.15-1.0			

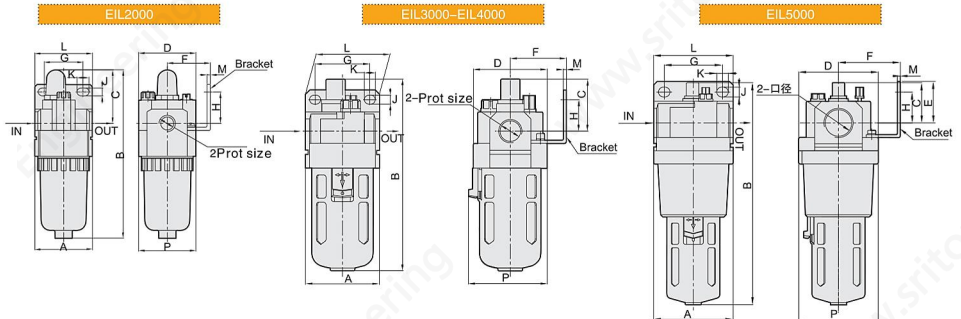
Model	Specifications			
	* Minimal flow of oil drop (L/min)	* Rated flow (L/min)	* Port size(G)	Bowl capacity (cm ³)
EIL2000-01	15	1300	1/8	25
EIL2000-02		1345	1/4	
EIL3000-02	30	2310	1/4	50
EIL3000-03	40	2375	3/8	
EIL4000-03	40	5321	3/8	130
EIL4000-04	50	5532	1/2	
EIL5000-06	190	7700	3/4	130
EIL5000-10		8000	1	

* The above information is based on 5.1Bar supply pressure, the flow of oil drop is 2-3 drops/ min, the temperature of Turbine No.1 oil is 20°C

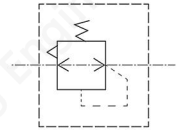
* The above information is based on 5.1Bar supply pressure and 0.3Bar step down

* NPT,PT port size is optional

Main Dimensions (mm)



Model	Port Size (G)	A	B	C	D	F	G	H	J	K	L	M	P
EIL2000	1/8"-1/4"	40	115	36	40	30	27	22	5.4	8.4	40	2.3	40
EIL3000	1/4"-3/8"	54	141	38	54	41	40	23	6.5	8	53	2.3	56
EIL4000	3/8"-1/2"	70	177	41	70	50	54	26	8.5	10.5	70	2.3	73
EIL5000	3/4"-1"	90	251	45.5	90	66.5	66	35	11	13	90	3.2	90



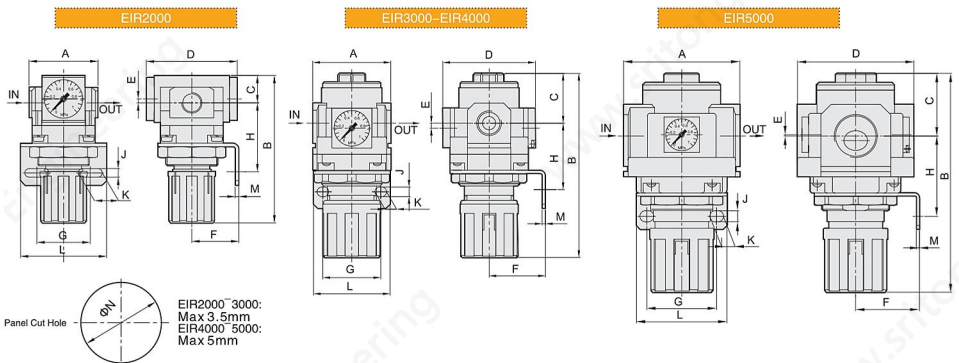
Specifications

Model	EIR2000	EIR3000	EIR4000	EIR5000
Proof pressure(MPa)			1.5	
Max. working pressure(MPa)			1.0	
Working temperature(°C)			5-60	
Pressure adjusting range(MPa)			0.05-0.85	
Valve type			With overflow	

Model	Specifications	
	Rated flow (L/min)	Port Size (G)
EIR2000-01	1178	1/8
EIR2000-02	1200	1/4
EIR3000-02	2112	1/4
EIR3000-03	2212	3/8
EIR4000-03	5020	3/8
EIR4000-04	5312	1/2
EIR5000-06	6400	3/4
EIR5000-10	6600	1

* The above information is based on 8.0 Bar supply pressure and 6.3 Bar set pressure * NPT,PT port size is optional

Main Dimensions (mm)



Model	Port Size (G)	A	B	C	D	E	F	G	H	J	K	L	M	N
EIR2000	1/8"-1/4"	40	95	17	55	1.3	30	34	44	5.4	15.4	55	2.3	33.5
EIR3000	1/4"-3/8"	53	127.5	35	64	3	39	40	46	6.5	8	53	2.3	42.5
EIR4000	3/8"-1/2"	70	149.5	37	81	0	49.2	54	54	8.5	10.5	70	2.3	52.5
EIR5000	3/4"-1"	90	168	48	90	1	49.2	54	62	8.5	10.5	70	2.3	52.5