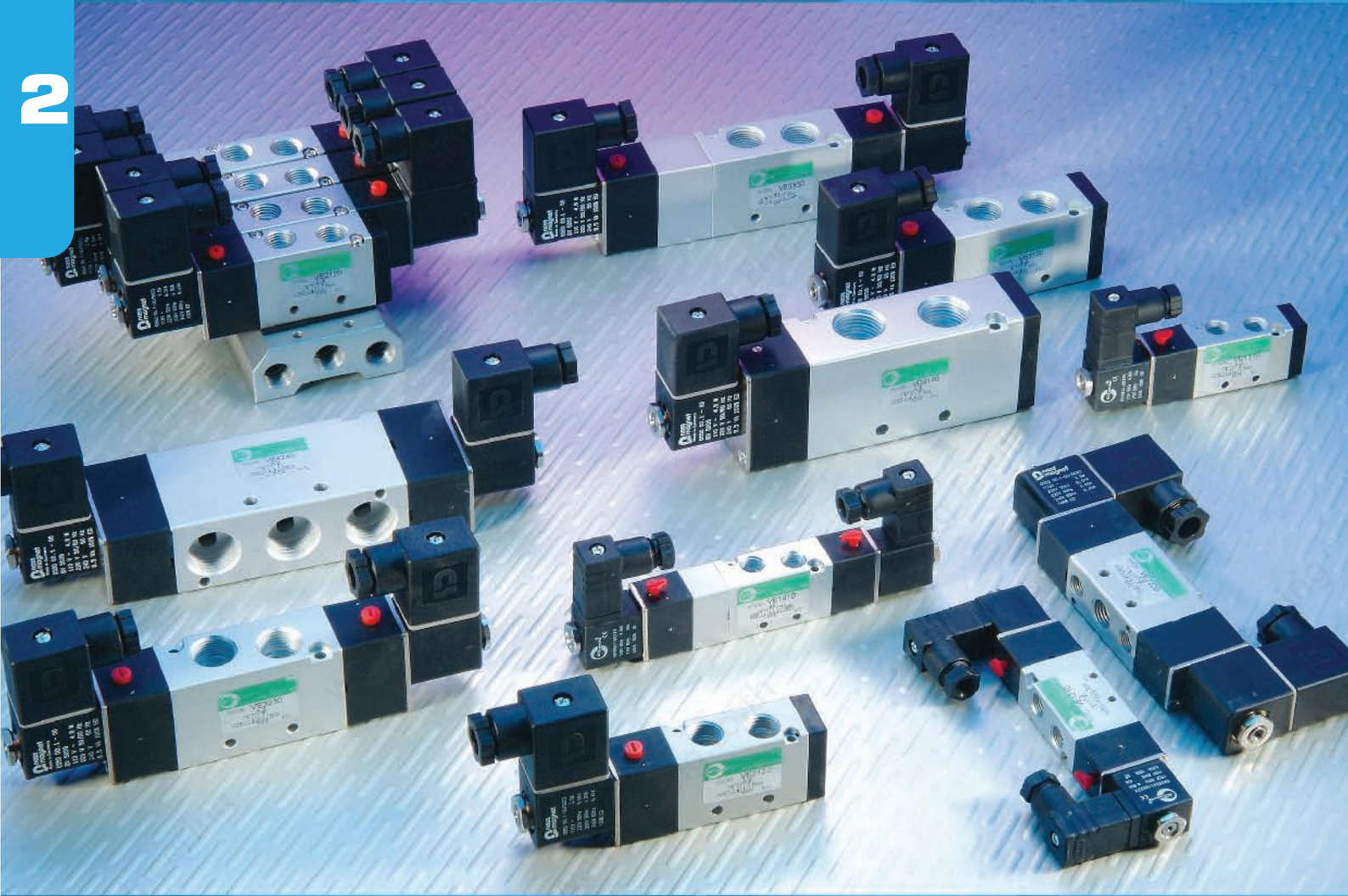


SOLENOID VALVE

2



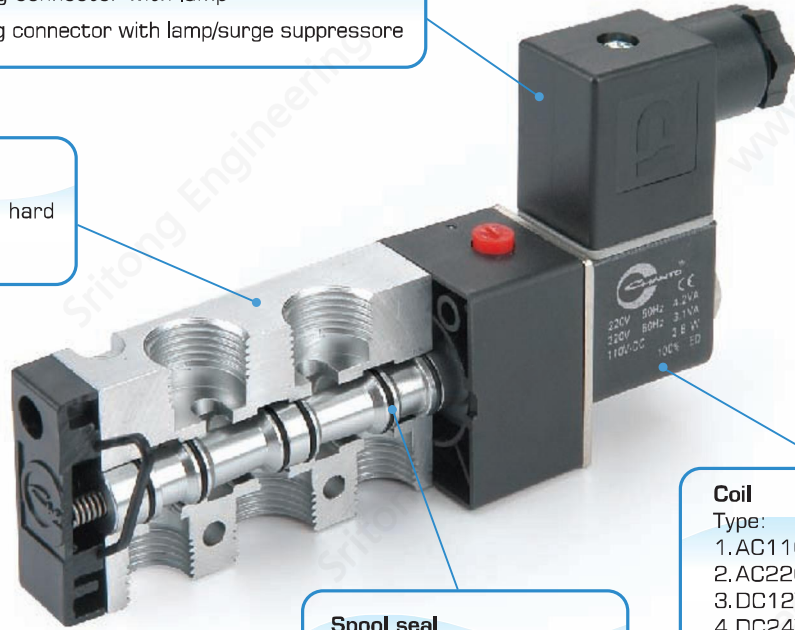
DIN/ISO Standard connectors(DIN43650)

1. Standard connector
2. Plug connector with lamp
3. Plug connector with lamp/surge suppressore

No burnout after long working time, Starting pressure 0.5 kgf/cm²

Body
Special machining and hard anodized for body.

15 million life cycles in normal usage.



Spool seal
Low friction/resistance of spool seal lengthen seal life.

Coil
Type:
1. AC110V 50/60Hz
2. AC220V 50/60Hz
3. DC12V
4. DC24V

Specifications

Model	VE1000	VE2000	VE3000	VE4000
Fluid	Air or inert gases			
Set pressure range	0.17~0.8MPa (1.7~8kgf/cm ²)			
Max. operating pressure	1.0MPa (10kgf/cm ²)			
Temp. Range	5°C~60°C (41°F~140°F)			
Lubrication	Lube or non-lube available			
Response time	0.05sec			
Cylinder range	ø12~ø40mm	ø40~ø63mm	ø63~ø100mm	ø80~ø160mm
Duty cycle	100% ED			
Electrical connection	DIN 43650 electrical connector			
Voltage range	Rated voltages ± 10%			
Protection	IP65			
Coil insulation	Class F			
Ambient Tem. Range	30°C (86°F)			
Power consumption	DC24V:2.5W AC110V 50Hz:4.8VA AC110V 60Hz:4VA	DC24V:2.5W AC110V / 220V 50Hz:6.0VA AC110V / 220V 60Hz:4.9VA AC240V 60Hz:6.4VA	DC24V:4.8W AC110V 50Hz:8.4VA AC110V 60Hz:6.8VA AC120V 60Hz:8.8VA AC220V 50Hz:8.5VA AC220V 60Hz:6.9VA AC240V 60Hz:8.5VA	



SOLENOID VALVE

VE Series

VE 1000/2000/3000/4000

Model	Configuration		Port size		Effective area(mm ²)(CV) P → A/B	Weight(g)	
			R,S	P,A,B			
VE1000	5 port 2 position	Single	G1/8"	G1/8"	12mm ² (0.67CV)	120	
		Double				175	
	5 port 3 position	Closed center				9mm ² (0.5CV)	195
		Exhaust center					
	Pressure center						
VE2000	5 port 2 position	Single	G1/8"	G1/4"	18mm ² (1CV)	210	
		Double				310	
	5 port 3 position	Closed center				12mm ² (0.7CV)	420
		Exhaust center					
	Pressure center						
VE3000	5 port 2 position	Single	G1/4"	G3/8"	30mm ² (1.68CV)	300	
		Double				385	
	5 port 3 position	Closed center				22mm ² (1.2CV)	525
		Exhaust center					
	Pressure center						
VE4000	5 port 2 position	Single	G1/2"	G1/2"	50mm ² (2.8CV)	590	
		Double				770	
	5 port 3 position	Closed center				640	
		Exhaust center					
	Pressure center						

How to order

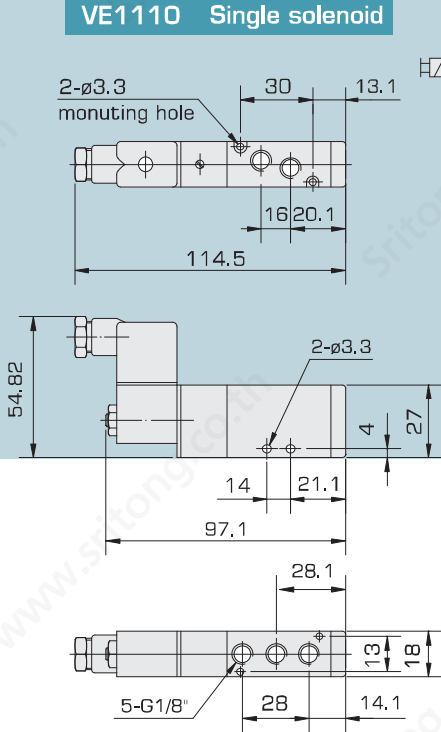
VE1	1	1	0	A11	L	M2
Series	Operation	Port size	Piping	Standard of voltage	Electrical entry	Manifolds
VE11000	1 Single solenoid 	1 G 1/8"	0 Without manifold	A11 AC110V 50/60Hz	None Standard connector DIN 43650	M2
VE22000	2 Double solenoid 	2 G 1/4"	1 With manifold	A22 AC220V 50/60Hz	L Plug connector with lamp DIN 43650	M3
VE33000	3 Closed center 	3 G 3/8"		A24 AC240V	S Plug connector with lamp & surge suppressor DIN 43650	M4
VE44000	4 Exhaust center 	4 G 1/2"		D12 DC 12V		M5
	5 Pressure center 			D24 DC 24V		M6
						M7
						M8
						M9
						M10

VE 1000 External Dimensions

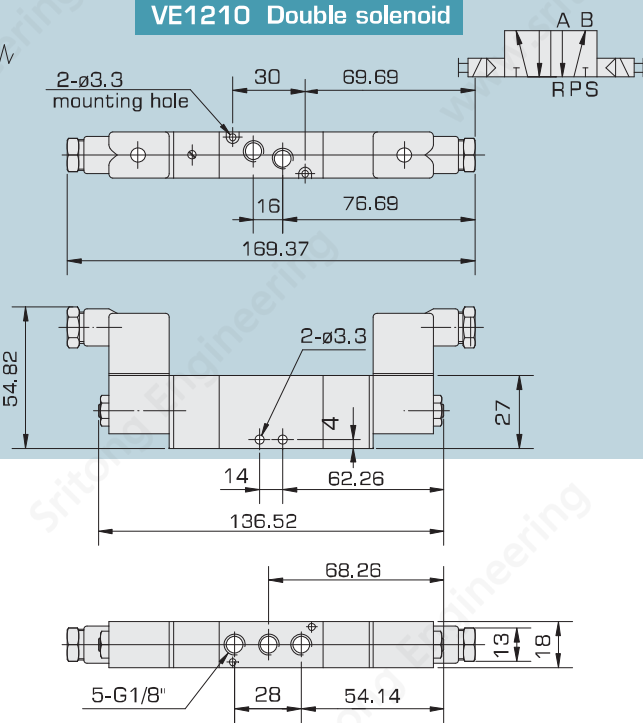
VE-Series

2017 Series

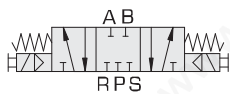
VE1110 Single solenoid



VE1210 Double solenoid



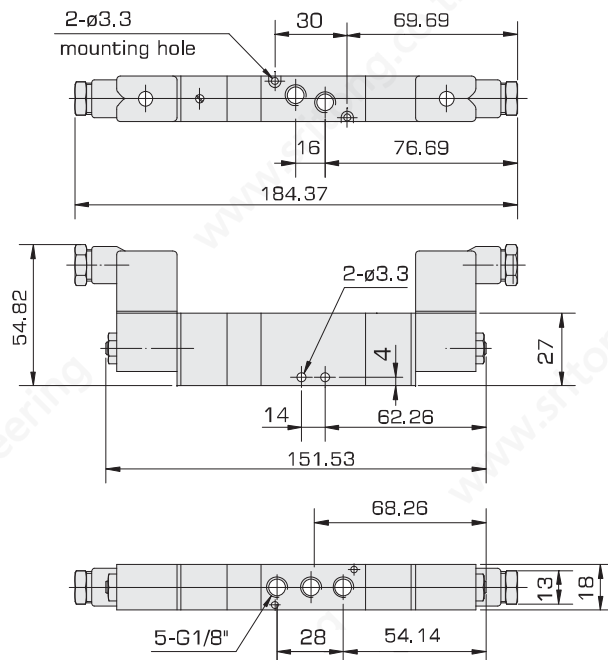
VE1310 Closed center



VE1410 Exhaust center



VE1510 Pressure center





SOLENOID VALVE

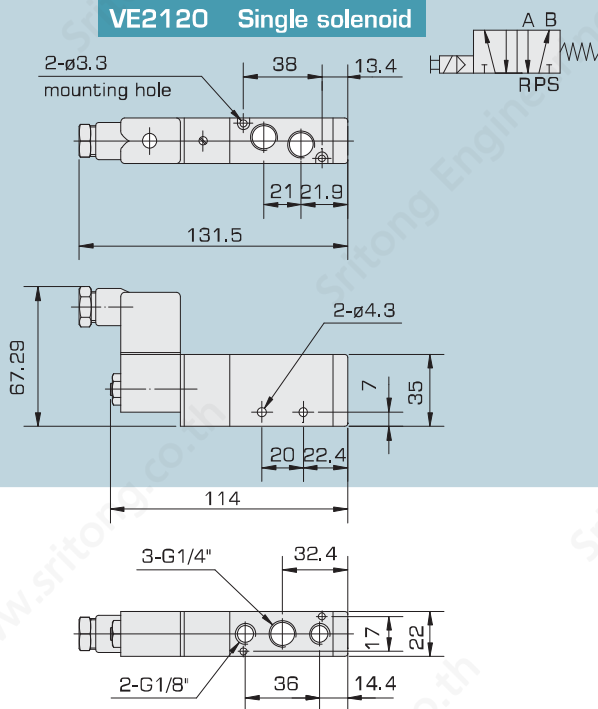
VE Series

VE 2000 External Dimensions

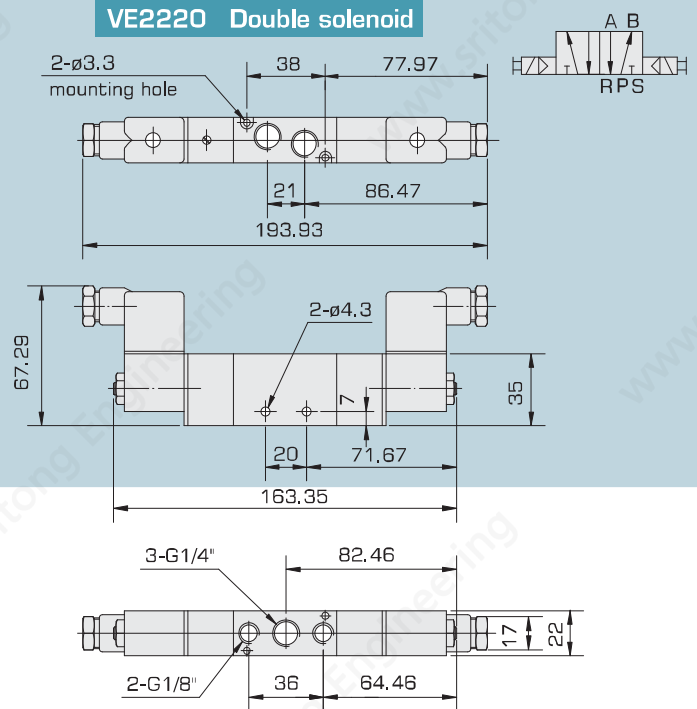
VE-Series

<http://www.chanto.com.tw>

VE2120 Single solenoid



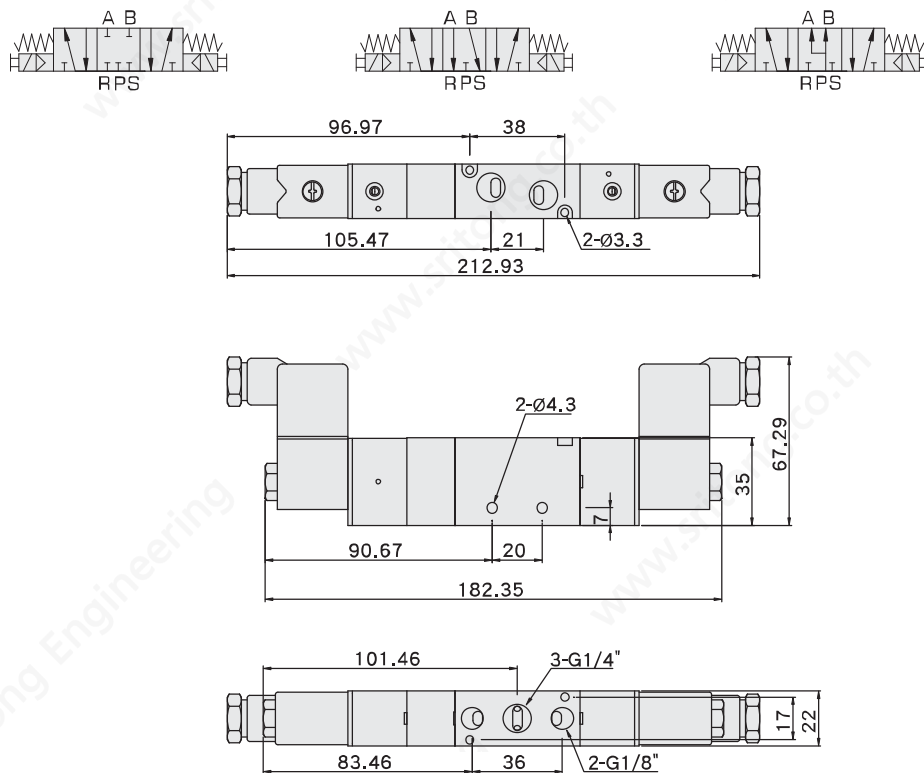
VE2220 Double solenoid



VE2320 Closed center

VE2420 Exhaust center

VE2520 Pressure center

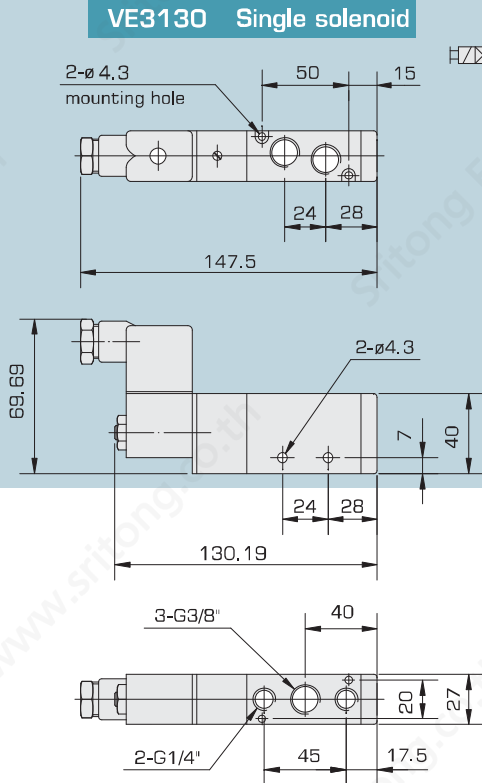


VE 3000 External Dimensions

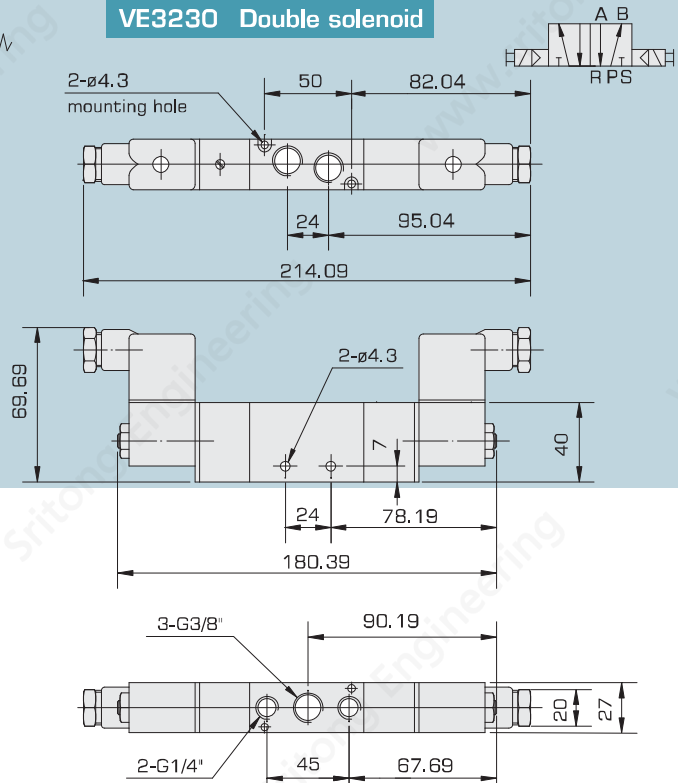
VE-Series

2017 Series

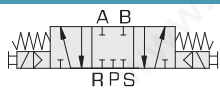
VE3130 Single solenoid



VE3230 Double solenoid



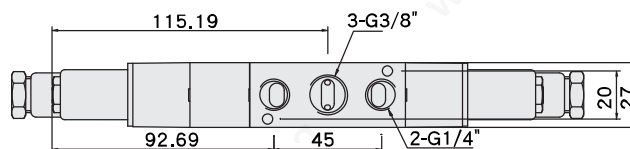
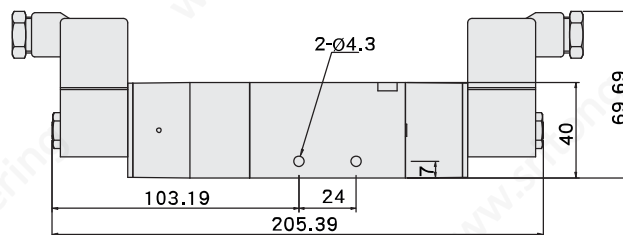
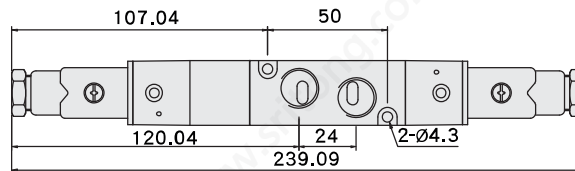
VE3330 Closed center



VE3430 Exhaust center



VE3530 Pressure center





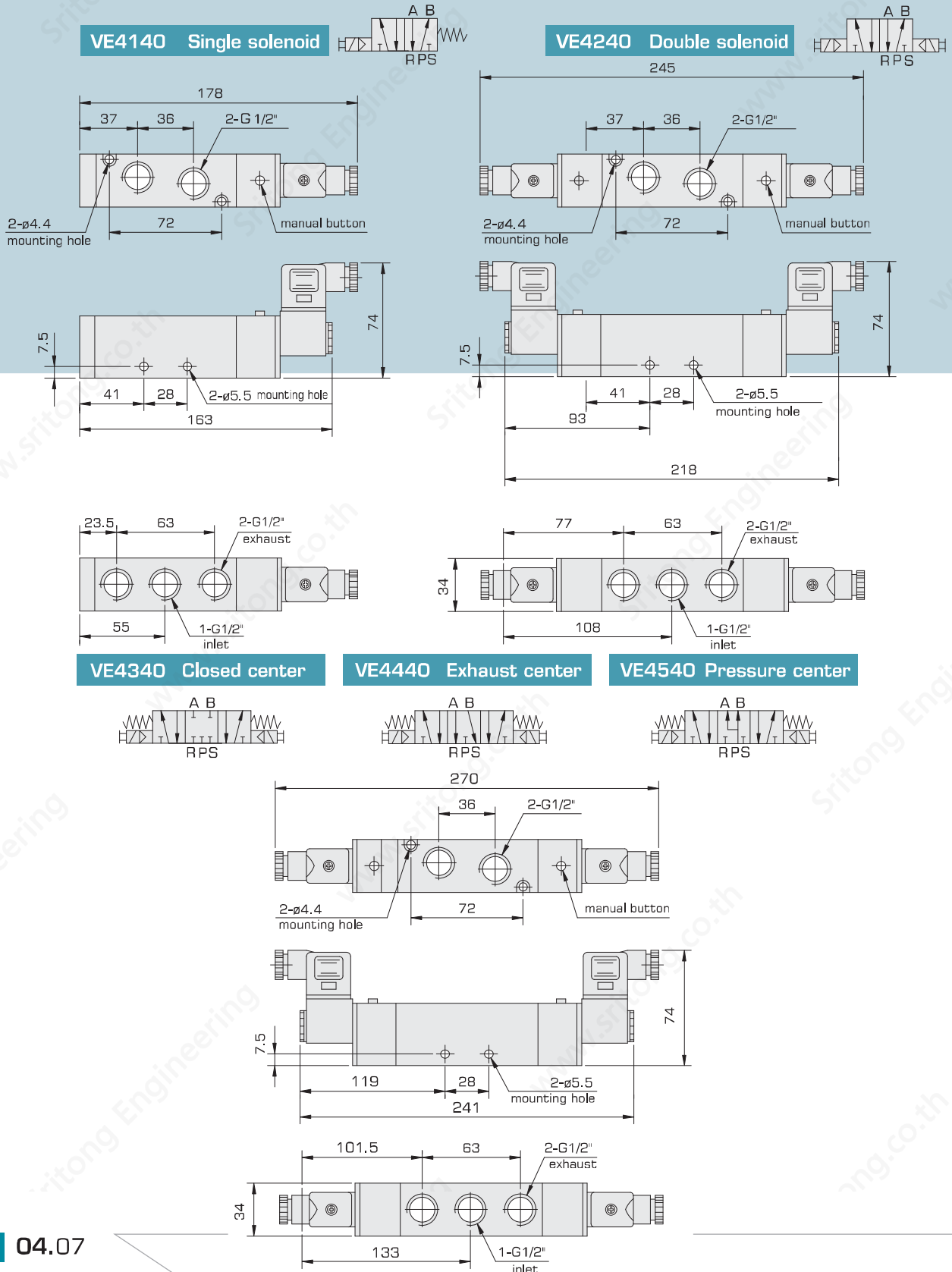
SOLENOID VALVE

VE Series

VE 4000 External Dimensions

VE-Series

<http://www.chanto.com.tw>



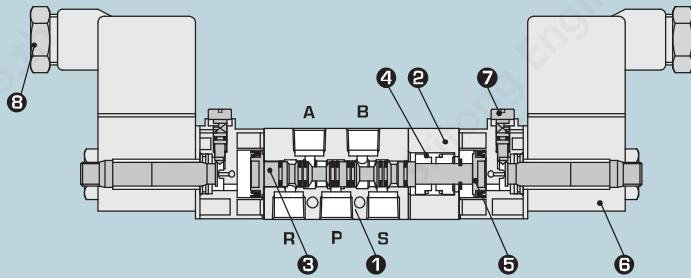
VE Internal Construction,

VE-Series

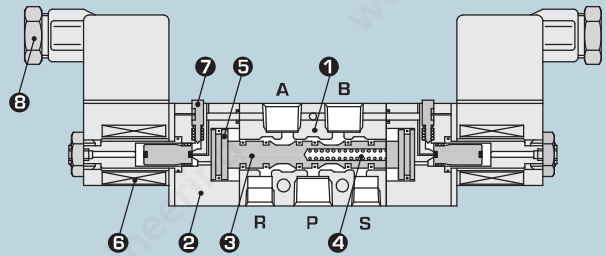
2 Series

Internal Construction:

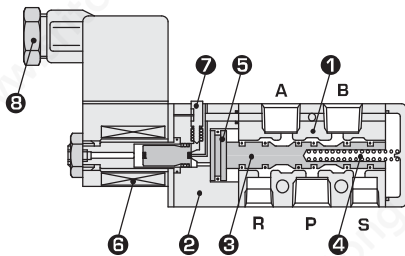
3 Position Double Solenoid



2 Position Double Solenoid



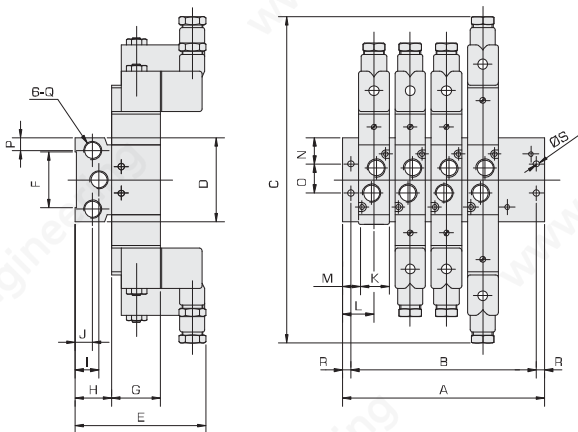
2 Position Single Solenoid



Parts lists:

No.	Description	Material	Note
1	Valve body	A6063	Anodized
2	Pilot base	Synthetic resin	Black
3	Spool	A6063	Anodized
4	Air/Spring return	SUS 304	-
5	Piston	Synthetic resin	-
6	Coil	Synthetic resin	Black
7	Manual push pin	S45C	Electro-plating
8	Electrical connector	Synthetic resin	DIN 43650

Manifold Dimensions:



Manifolds	VE1		VE2		VE3		VE4	
	A	B	A	B	A	B	A	B
M2	57	47	69	57	87	75	98	84
M3	76	66	92	80	116	104	133	119
M4	95	85	115	103	145	133	168	154
M5	114	104	138	126	174	162	203	189
M6	133	123	161	149	203	191	238	224
M7	152	142	184	172	232	220	273	259
M8	171	161	207	195	261	249	308	294
M9	190	180	230	218	290	278	343	329
M10	209	199	253	241	319	307	378	364

Series	C	D	E	F	G	H	I	J	K	L	M	N	O	P	Q	R	ØS
VE1	172	58	52	22	27	25	16	11	18	19	10	19	20	9	G1/4"	5	4.5
VE2	237	64.5	94	40	35	27	16	12	22	23	11.5	21.2	22	9	G1/4"	5	5
VE3	255	80	101	57	40	28	15.5	14.5	27	29	14.5	25.8	28.4	11.5	G3/8"	7	5
VE4	245	100	113	63	50	39	14.5	14.5	34	31.5	14.5	34	32	18.5	G1/2"	6.5	5.5