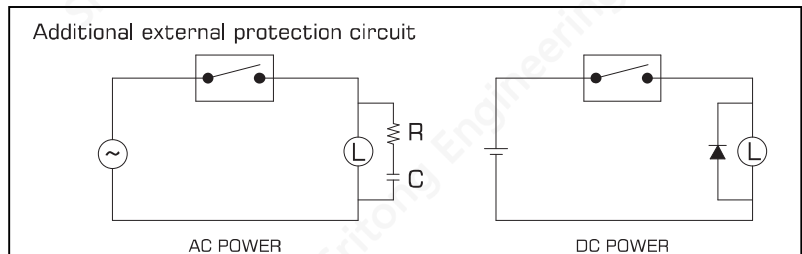
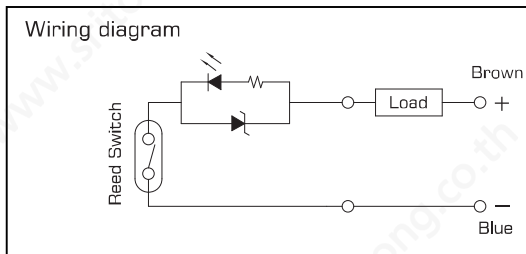


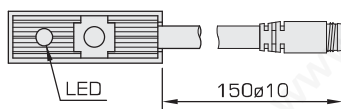
Specifications

Type	MT-22
Wiring system	Two wire type
Sensor type	Reed switch
Operating voltage	DC/AC 4~240V
Switching current	5~40mA.
internal voltage drop.	2.5V(Max.)
Indicator lamp	Red
Lead wire	2M
Temperature range	-10°C~70°C
Enclosure classification	IP67
Output	N.O.
Delay time	ON+OFF < 1ms

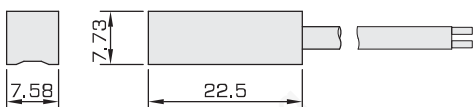


External Dimensions

● MT-22/MT-22D



● Wiring

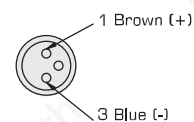


● Standard

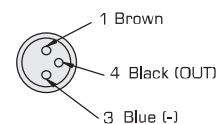
Application	Bore
AB	6~16
AC	20~40
MSR	12~25
MB, GD	16~40
GE	25,40

WIRING DIAGREAM OF THE "D"

● Two wire type

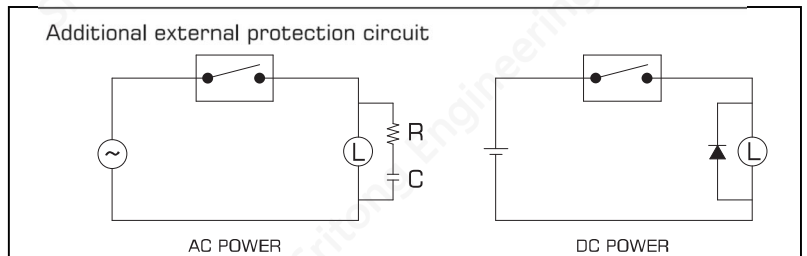
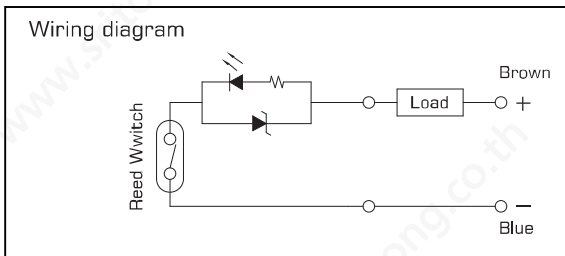


● Three wire type



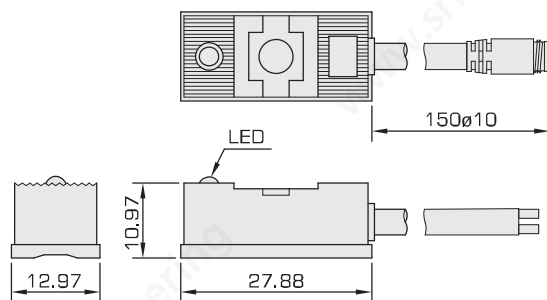
Specifications

Type	SH-22
Wiring system	Two wire type
Sensor type	Reed switch
Operating voltage	DC/AC 4~240V
Switching current	5~40mA.
internal voltage drop.	2.5V(Max.)
Indicator lamp	Green
Lead wire	2M
Temperature range	-10°C~70°C
Enclosure classification	IP67
Output	N.O.
Delay time	ON+OFF< 1ms



External Dimensions

SH-22/SH22D



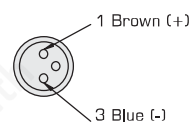
● Wiring

● Standard

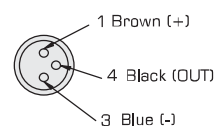
Application	Bore
AS	40~150

WIRING DIAGRAM OF THE "D"

● Two wire type



● Three wire type



Specification

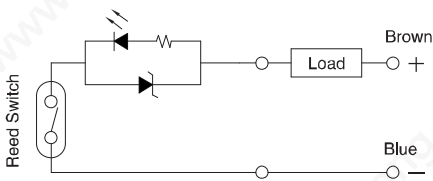
Type	TA-11N	TA-11P	TA-22
Wiring system	Three wire type		Two wire type
Sensor type	NPN Current Sinking	PNP Current Sourcing	Reed switch
Operating voltage	DC 5~30V		DC/AC 5~240V
Switching current	200mA, max.		100mA, max.
Switching rating	6W max.		10W max.
Current consumption	22mA@24V max.	20mA@24V max.	-
Internal voltage drop	0.5V max.		3.5V max.
Leakage current	0.01mA max.		-
Indicator lamp	Red LED	Green LED	Red LED
Cable	ø3.3, 3C, Black PVC		ø3.3, 2C, Grey PVC
Temperature range	-10°C~70°C		
Shock	50G		30G
Vibration	9G		
Enclosure classification	IEC529 IP67		
Protection circuit	Power Source Reverse Polarity; Surge suppression		None



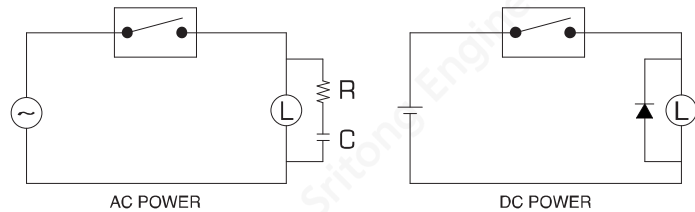
Example of Installation



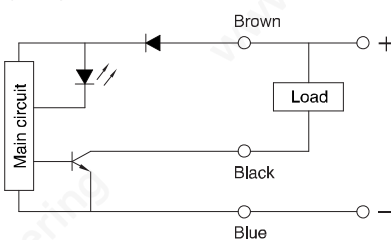
Wiring diagram (Reed switch TA-22)



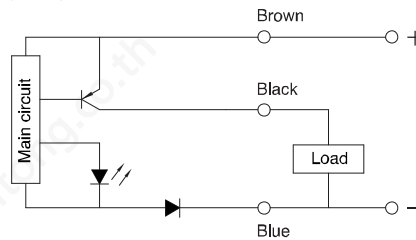
Additional external protection circuit



Wiring diagram (Solid state switch TA-11N)



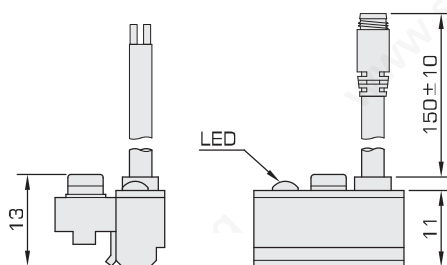
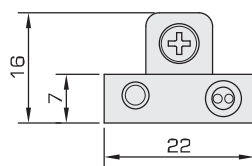
Wiring diagram (Solid state switch TA-11P)



External Dimensions

- TA-11N, TA-11P, TA-22
- TA-11ND, TA-11PD, TA-22D

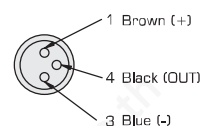
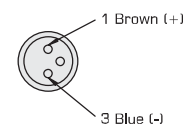
Application	Bore
DE	16~32
DF,RA	16~25
JG	12~100
JS,MKS	32~63
ME	32~50
VHR	16~40



- Standard
- Wiring

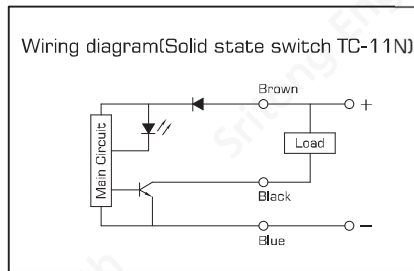
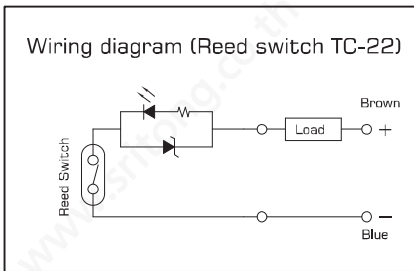
WIRING DIAGRAM OF THE "D"

- Two wire type
- Three wire type



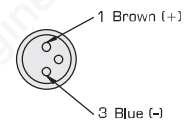
Specifications

Type	TC-11N	TC-22
Wiring system	Three wire type	Two wire type
Sensor type	Solid state switch	Reed switch
Operating voltage	DC 5~30V	DC/AC 4~240V
Switching current	0~200mA.	5~40mA.
Internal voltage drop	0.5V max.	2.5V max.
Indicator lamp	Green LED	Red LED
Lead wire	2M	
Temperature range	-10°C~70°C	
Enclosure classification	IP67	
Output	N.O.(NPN)	N.O.
Delay time	ON+OFF < 1ms	

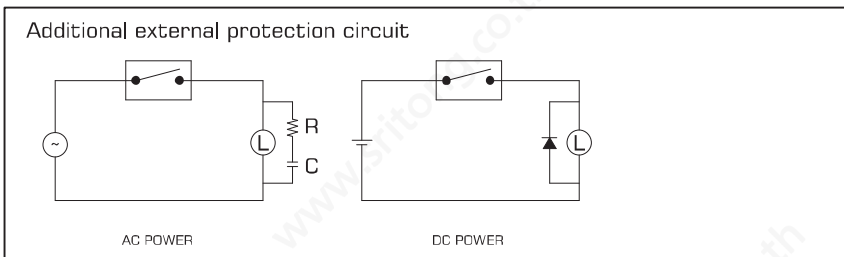
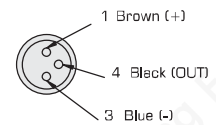


WIRING DIAGRAM OF THE "D"

- Two wire type

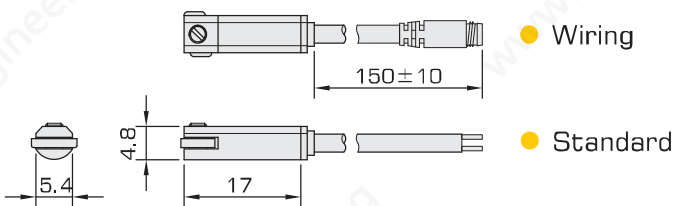


- Three wire type

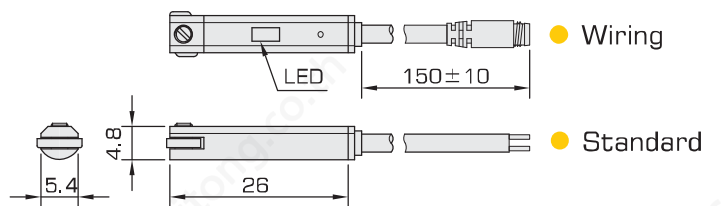


External Dimensions

TC-11N/TC-11ND



TC-22/TC-22D



Application	Bore
KA	16~25
KB	10~20
KP	20~40
RC	16~40

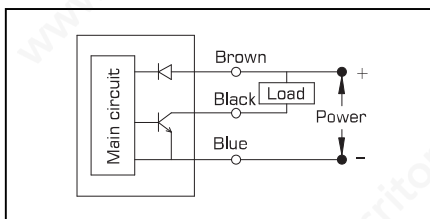
Application	Bore
JB	16~25

Specification

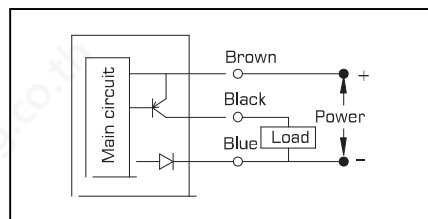
Type	TD-11N	TD-11P	TD-11
Wiring system	Three wire type		Two wire type
Sensor type	NPN Current sinking	PNP Current sourcing	Reed Switch
Operating voltage	DC 5~30V		DC/AC 5~120V
Switching current	200mA, max.		50mA, max.
Switching rating	6W max.		
Current consumption	20mA.@24V max.(Switch Active)		-
Internal voltage drop	0.5V@200mA, max.		2.5V max.
Leakage current	0.01mA max.		-
Indicator lamp	Red LED	Green LED	Red LED
Cable	ø2.8, 3C, Black PU		ø2.8, 2C, Grey PU
Temperature range	-10°C~70°C		
Shock	50G		30G
Vibration	9G		
Enclosure classification	IEC529 IP67		
Protection circuit	Power source reverse polarity; Surge Suppression		None



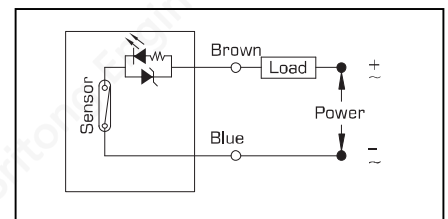
TD-11N



TD-11P

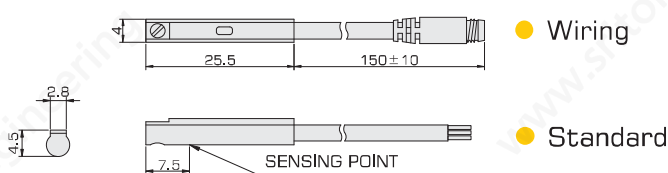


TD-11

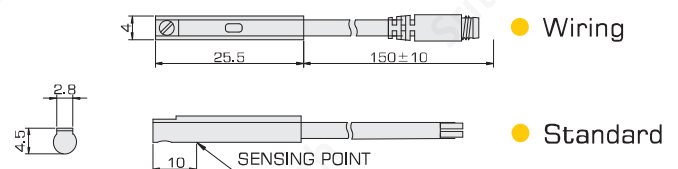


External Dimensions

TD-11N, TD-11P / TD-11ND, TD-11PD



TD-11 / TD-11D



Application	Bore
DF	10
KA,KB	10
JS	12~100
MKS	20~50
JU	10~32

WIRING DIAGRAM OF THE "D"

Two wire type Three wire type

