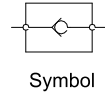
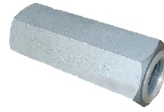
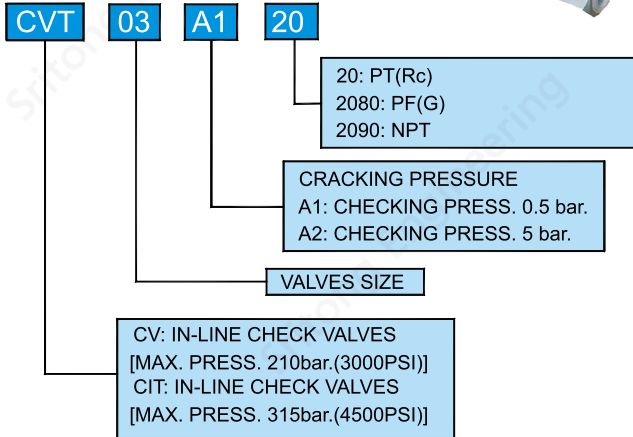
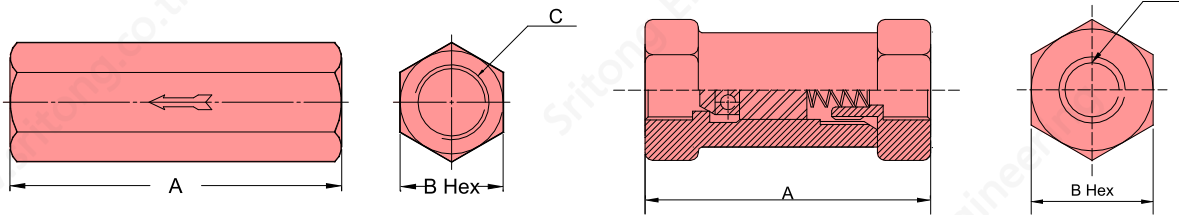
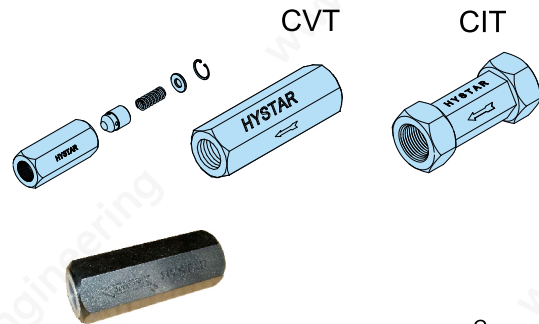


## IN-LINE CHECK VALVES

### Ordering Code



Designed to allow flow in one direction and shut-off in reverse  
Manufactured in steel  
Max. working press: 315 bar  
7 sizes from 40 ~400 lpm  
Cracking press: A1=0.5 bar, A2=5 bar



Model	C PT/NPT	A mm(inch)	B mm(inch)	Flow lpm	Max. Press. bar(PSI)	Weight kg
CVT-03	3/8"	74(2.91)	23(.91)	40	210 (3000PSI)	0.18
CVT-04	1/2"	81(3.19)	29(1.14)	60		0.33
CVT-06	3/4"	91(3.58)	35(1.38)	100		0.48
CVT-08	1"	114(4.49)	46(1.81)	150		1.10
CVT-10	1 1/4"	133(5.24)	56(2.20)	200		1.98
CVT-12	1 1/2"	134(5.28)	66(2.60)	280		2.78
CVT-16	2"	153(6.02)	76.5(3.01)	400		3.64
CIT-03	3/8"	74(2.91)	23(.91)	40	315 (4500PSI)	0.18
CIT-04	1/2"	81(3.19)	29(1.14)	60		0.33
CIT-06	3/4"	91(3.58)	35(1.38)	100		0.48
CIT-08	1"	114(4.49)	46(1.81)	150		1.10
CIT-10	1 1/4"	133(5.24)	56(2.20)	200		1.98
CIT-12	1 1/2"	134(5.28)	66(2.60)	280		2.78
CIT-16	2"	153(6.02)	76.5(3.01)	400		3.64