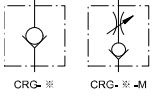


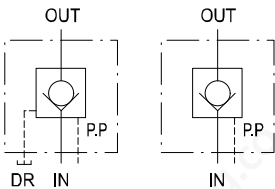
Check Valves



H	CR	G	03	05	10
MAX. OPERATING PRESSURE 250 kgf/cm ² NO CODE : STANDARD TYPE 250 kgf/cm H : 350 kgf/cm	SERIES NUMBER	MOUNTING G : SUB-PLATE MOUNTING	VALVE SIZE 03 : 3/8" 06 : 3/4" 10 : 1-1/4"	CRACKING PRESSURE 05 : 0.35 kgf/cm ² 50 : 3.5 kgf/cm ² 75 : 5 kgf/cm ²	DESIGN NUMBER 10 : NO ISO-STANDARD 20 : ISO STANDARD

Model	Max. Operated Pressure (kgf/cm ²)	Cracking Pressure (kgf/cm ²)	Rated Flow (l/min)	Weight (kg)
CRG-03-※-10	STD : 250 H : 350	05 : 0.35	40	1.7 1.9
CRG-06-※-10		50 : 3.5	125	4.2 3.2
CRG-10-※-10		75 : 5.0	250	7.7 6.0

Pilot Operated Check Valves



CPD	G	06	05
SERIES NUMBER	MOUNTING G : SUB-PLATE MOUNTING T : THREADED CONNECTIONS F : FLANGED CONNECTIONS	VALVE SIZE 03 : 3/8" 06 : 3/4" 10 : 1-1/4"	CRACKING PRESSURE 05 : 0.35 kgf/cm ² 50 : 3.5 kgf/cm ² 75 : 5.0 kgf/cm ²

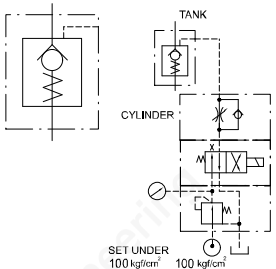
E	10	FPT
PILOT AND DRAIN TYPE E : EXTERNAL PILOT INTERNAL DRAIN ET : EXTERNAL PILOT & DRAIN	DESIGN NUMBER 10 : STANDARD TYPE 20 : ONLY 10 TYPE	TYPE OF PIPE FLANGE FPT : WITH P and T PORT FLANGES FT : WITH T PORT FLANGE FP : WITH P PORT FLANGE NO CODE : WITHOUT FLANGE

Model	Max. Operated Pressure (kgf/cm ²)	Cracking Pressure (kgf/cm ²)	Rated Flow (l/min)	Weight (kg)								
<table border="1"> <thead> <tr> <th>THREADED CONNECTIONS</th> <th>SUB-PLATE MOUNTING</th> </tr> </thead> <tbody> <tr> <td>CPDT-03-※</td> <td>CPDG-03-※</td> </tr> <tr> <td>CPDT-06-※</td> <td>CPDG-06-※</td> </tr> <tr> <td>CPDT-10-※</td> <td>CPDG-10-※</td> </tr> </tbody> </table>	THREADED CONNECTIONS	SUB-PLATE MOUNTING	CPDT-03-※	CPDG-03-※	CPDT-06-※	CPDG-06-※	CPDT-10-※	CPDG-10-※	250	05 : 0.35 50 : 3.5 75 : 5.0	40	3.8 4.6
THREADED CONNECTIONS	SUB-PLATE MOUNTING											
CPDT-03-※	CPDG-03-※											
CPDT-06-※	CPDG-06-※											
CPDT-10-※	CPDG-10-※											
	125	6.4 7.5										
	250	12.8 12.8										
CPDF-10-※	250	15.4										

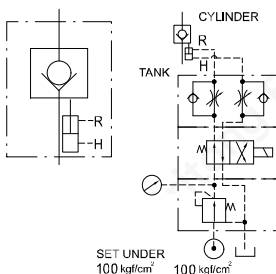
Prefill Valves



PF-※ - 20 EXAMPLE



PF-※ - 30 EXAMPLE



PDF	80	20	FT
SERIES NUMBER (FLANGE CONNECTION) PF : NON-DECOMPRESSION PDF : DECOMPRESSION	VALVE SIZE 50 : 2" 80 : 3" 90 : 3-1/2" 100 : 4" 125 : 5" 150 : 6" 200 : 8" 300 : 12" 400 : 16" 500 : 20"	PILOT TYPE 20 : SPRING TYPE 30 : CYLINDER TYPER	TYPE OF PIPE FLANGE FT : WITH T PORT FLANGE NO CODE : WITHOUT FLANGE

Model	Port	Max. Operated Pressure (kgf/cm ²)	Max. Pilot Pressure (kgf/cm ²)	Max. Flow (l/min)	Pilot Pressure (kgf/cm ²)	Weight (Not Add Pipe Flange) kg	Weight (Add Pipe Flange) kg
PF-50-20-※	2"	250	100	250	(4 Note4)	3.4	4.2
PDF-80-20-※	3"			400	35.34	8.7	10.5
PDF-90-20-※	3-1/2"			630	40.72	11.8	14.4
PDF-100-20-※	4"			1000	37.81	15.8	18.5
PDF-125-20-※	5"			1600	36.1	25.9	29.5
PDF-150-20-※	6"			2500	30.63	42.2	47.7
PF-200-20-※	8"			4000	4.1	98	112
PF-200-30-※					4.8	99	113
PF-300-20-※					5.3	156	178
PF-300-30-※	12"			7000	5.1	158	180
PF-400-30-※					8	280	317
PF-500-30-※					8	709	775